

HYGINOX SE-20



DESCRIPTION

HYGINOX SE is a range of close-coupled centrifugal pump with hygienic design. This single-stage horizontal pump has a circular casing with axial suction and tangential discharge. The main pump components are pump casing, impeller, cover, lantern and a shaft which is rigidly coupled to the motor shaft.

APPLICATION

The sanitary and cost-efficient design of the HYGINOX SE centrifugal pump makes it particularly suitable as main process pump in the dairy, beverage, pharmaceutical and cosmetic industries. As a general rule, HYGINOX SE pumps, in their standard versions, are used in the food industry mainly to transfer liquids.

DESIGN ANF FEATURES

HYGINOX SE is made of a cold-formed stainless steel casing, stainless steel open impeller (investment casting), pump cover, lantern and shaft, connected to the motor shaft by mechanical compression. This pump is equipped with a single mechanical seal in its standard version. The motor complies with the IEC standards, it is protected with a stainless steel shroud and provided with the height adjustable hygienically designed legs.

MECHANICAL SEAL

The Hyginox SE pump is provided with an internal single mechanical seal. The seal is balanced and has a hygienic design. As standard, the stationary part is in carbon and the rotary part is in silicon carbide, the gaskets are in EPDM.



OPERATING LIMITS

Nominal Pressure	1000kPa (10bar)
Temperature range	-10°C to 120°C
SIP	140°C (max. 30 min)

PUMP CHARACTERISTICS

Model:	Hyginox SE-20	Suction (mm):	50
Type:	C1420	Discharge (mm):	40
Speed (rpm):	3000	Connection type:	DIN 11851
Efficiency (%):	55	Impeller size (mm):	145
Drive power (kW):	4,0		

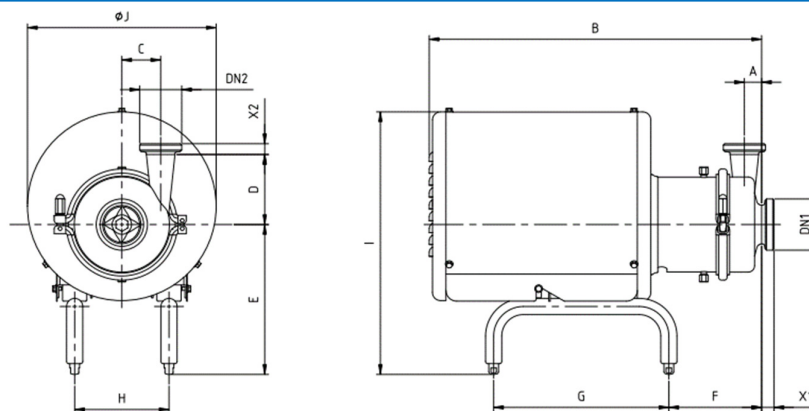
MATERIALS AND DESIGN

Pump casing:	AISI316L	Motor shroud:	MR - 304
Back plate:	AISI316L	Lantern:	AISI304L
Shaft:	AISI316L	Base Plate:	AISI304
Impeller:	AISI316L	Elastomers:	EPDM
Mechanical seal:	Single	Mechanical seal materials:	C/SiC EPDM
Surface finish internal:	Polished Ra ≤ 0,8µm		

MOTOR SPECIFICATION

Motor vendor:	TECHTOP	Form:	B3/B145 IEC
Size (kW):	4,0	Insulation:	Class F
Rated speed (rpm):	2900	Protection class:	IP55
Frequency (Hz):	50	Motor size:	T100
Voltage (V):	230/400	Efficiency class:	IE3

DIMENSIONS | SE-20



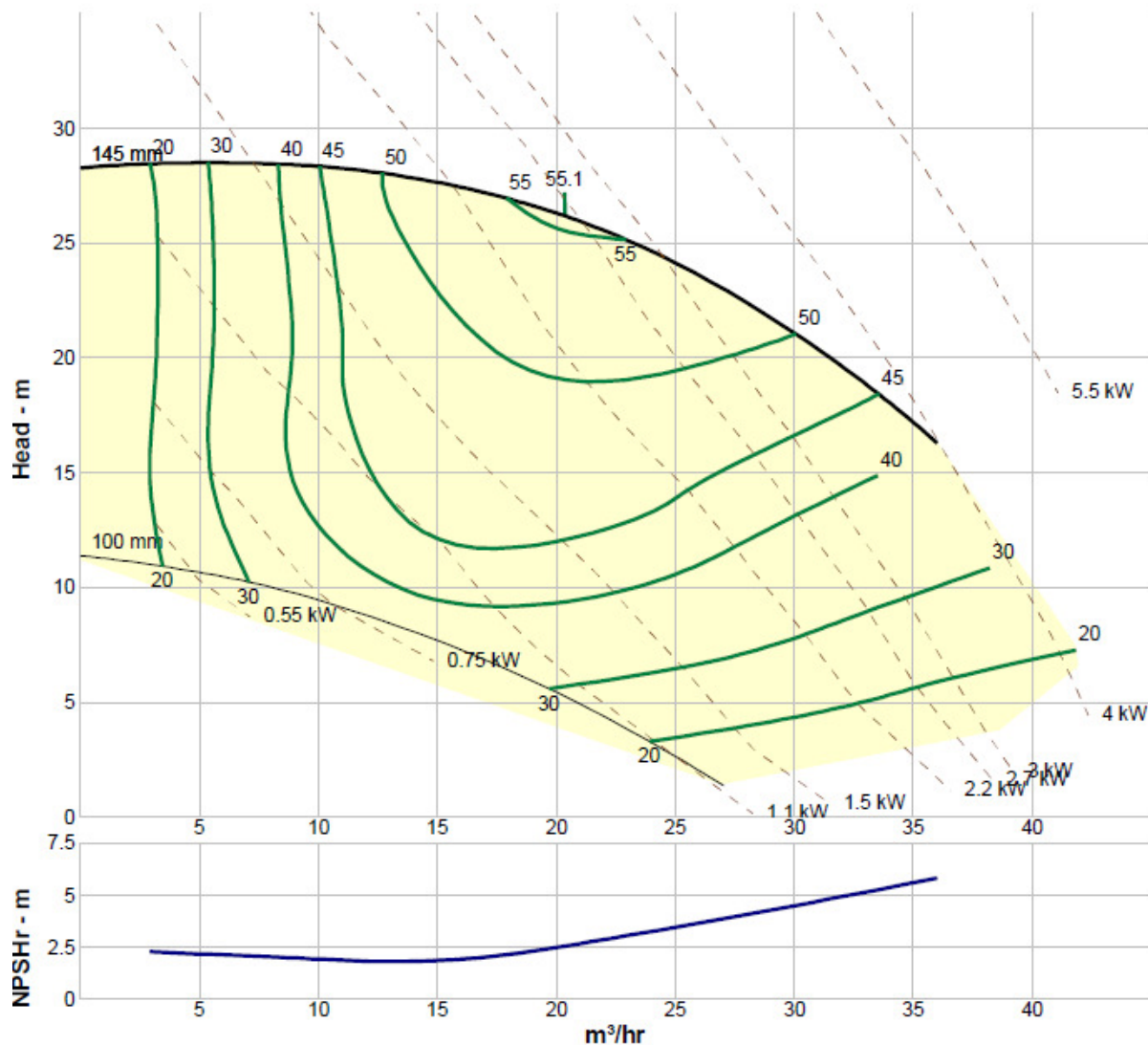
Type	DN1	DN2	X1	X2	D	A	B	C	E	F	G	H	I	ØJ	kg
MR	50	40	23	20	120	32	610	74	278	166	325	175	490	350	51



PERFORMANCE EVALUATION

Duty	Flow [m ³ /hr]	Head [m]	Efficiency [%]	Power [kW]	NPSHr [m]
Minimum	3	28,5	20	1,13	2,28
BEP	20,3	26,2	55	2,63	2,55
Maximum	36	16,3	40	3,98	5,82

PUMP CURVE



SPARE PARTS

Set:

Artikel number	Description
IN8GC100201452	Centrifugal pump Hyginox Spare part set SE-20 C/SiC/EPDM

Set containing:

Pos.	Description	Qty
08	Mechanical seal C/SiC/EPDM	1
80A	O-ring	1
80D	O-ring	1

