



Alfa Laval LKTC

Tank leg and base plate

Introduction

The Alfa Laval LKTC Tank Leg is a fully adjustable stainless steel support for freestanding tanks or vessels. Sturdy and compact, it can stand either directly on the floor or, to ensure stability on uneven floor surfaces, on an optional steel base plate.

The LKTC Tank Leg is capable of supporting maximum static loads of up to 160,000 N within an area of 7,800 mm². Designed to stand on a base plate, the sphere-shaped tank feet are capable of supporting a maximum load of up to 19 tons.

Application

The Alfa Laval LKTC Tank Leg is designed for use on freestanding, stainless steel hygienic tanks or vessels, where adjustable supports are necessary to ensure stability. They are used across the brewery, food and beverage, personal care, biotechnology, pharmaceutical and many other industries.

Benefits

- Provides adjustable support for tanks or vessels
- Ensures stability on uneven floor surfaces
- Sturdy, compact design
- Easy to clean

Standard design

The Alfa Laval LKTC Tank Leg consists of a cylindrical stainless steel piece welded onto the tank. The cylindrical piece houses an internal thread that fits onto and engages an adjustable cylinder-shaped spindle. To adjust the tank feet to the optimal height, simply shorten or lengthen the spindle.

The Alfa Laval Tank Leg is available in three sizes ($\frac{3}{4}$ ", 1" and 1- $\frac{1}{2}$ "") with or without a baseplate. The baseplate available in five sizes ($\frac{1}{2}$ ", $\frac{3}{4}$ ", 1", 1- $\frac{1}{4}$ " and 1- $\frac{1}{2}$ ""). The baseplate has a ball socket and is used where the floor is not completely horizontal to ensure stable support.



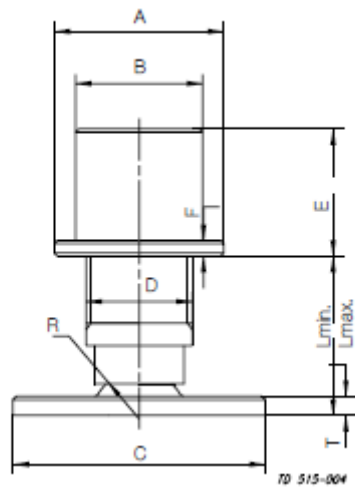
TECHNICAL DATA

Size	Max. static load (N)	Floor area of baseplate (mm ²)
¾"	75000	2600
1"	100000	5000
1½"	160000	7800

PHYSICAL DATA

Materials	
Steel parts:	Stainless steel AISI 304
Finish: Base plate:	Mat
Other parts:	Semi bright

Dimensions (mm)



Size	¾"	1"	1½"
A	38	53	80
B	35.5	39.8	65.3
C	58	80	100
D	¾"	1"	1½"
E	35	40	45
F	5	5	5
Lmin.	20	20	20
Lmax.	35	50	60
R	15	15	25
T	4	6	8
Weight	0.35	0.60	1.67
(kg)	0.43*	0.83*	2.25*

Ordering

Tanklegs without base plate		Tanklegs with base plate	
¾"	9611-71-029-0	¾"	9611-71-022-0
1"	9611-71-030-0	1"	9611-71-023-0
1½"	9611-71-032-0	1½"	9611-71-025-0

Alfa Laval reserves the right to change specifications without prior notification.

How to contact Alfa Laval

Contact details for all countries are continually updated on our website. Please visit www.alfalaval.com to access the information direct.