



## EN 10357 serie D

The norm EN-10357-D consists 3 different size ranges from earlier norms and standards. They all are according the inches, but with different diameters or wall thickness. The earlier norms were BS-4825, ISO-2037 or the Dutch inches. So this new European norm consists all common inch sizes except the American ASTM A-270 size range. Take care, EN-10357-D consists a range of Inch sizes with very small size differences in diameter and wall thickness. These small differences are not always mentioned in daily use but can cause some problems.

The norms within this catalogue EN 10357-D are linked to each other. The diameters and wall thickness in EN 10357-D are for example also applicable on the other norms in the range. The parts of this package, which SKS calls the Q-Plus and Q-fitt range are exactly according the norm. SKS takes complete responsibility of the traceability and quality for this branded components.



Food	
Range	EN-10357-D
Tube	EN-10357-D
Welding fittings	BS 4825-2 / ISO 2851
Couplings	DIN-11853 screw/flange/clamp connection
	DIN-11864 screw/flange/clamp connection
	BS 4825-3 / ISO 2852 Clamp
	BS 4825-4 / ISO 2853 IDF couplings
	DIN 11851 screw couplings
	DIN 11851 SKS couplings (EHEDG)
	SMS 3008 couplings
	BS 4825-5 RJT couplings

### EN-10357-D (inche range) tube

This norm is at SKS the leading production method for all types of dairy tubes. In general all the leading producers are using this norm for food graded tubes in all dimension ranges available. Seen the tolerances and the various surface finishing possibilities, there is a huge pallet of executions. Within this complete pallet the different qualities have different price levels. Be aware that there are a lot of tubes in circulation which meet the dimensions but absolutely don't meet the other requirements. Always check the marks on the materials together with the certificate. The EN 10357-D is directly linked to the EN 10217-7 and the annealed type (BC) is suitable for the pressure application according PED (Pressure Equipment Directive 2014/68/EU). SKS only collaborates with certified producers according the PED requirements.

### Material according EN 10088-1

Stainless steel; 1.4306 or 1.4307 (304L) and 1.4404 or 1.4432 (316L).

### Dimension table and tolerances according EN-ISO 1127:

As mentioned in the below overview

### Test procedure EN 10217-7 TC1

Destructive and non-destructive tests

### Surface roughness Ra (DIN 4768 table 3)

Internal length seam cold rolled.

H2 type\* = Ra < 0,8 µm and < 1,6 µm in weld environment (according the norm)

H3 type\* = Ra < 0,8 µm in weld environment. (EHEDG requirement)

H2 and H3 is a S.K.S. name, originally specified in the DIN 11866 norm (hygienic class)

### Type

CC = un annealed, pickled (W2b)

BC = annealed, pickled (W2Ab) or bright annealed (W2Rb)

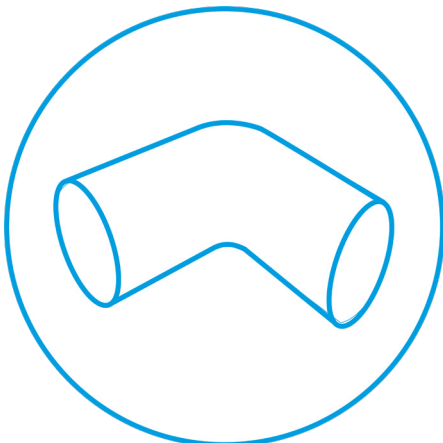
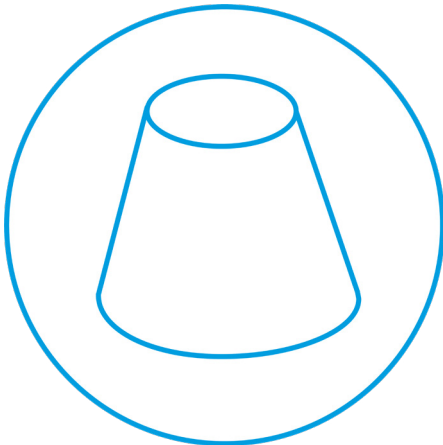
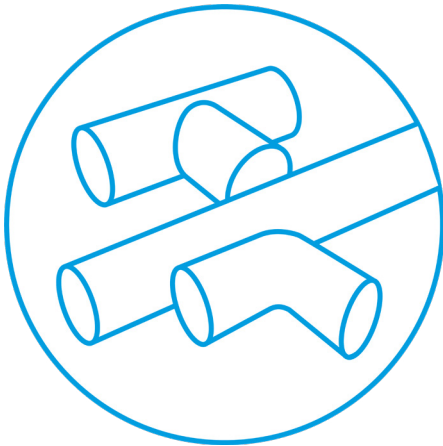
CD = un annealed, external polished (grain 320). W2bWG

BD = annealed, external polished (grain 320). (W2AbWG or W2RbWG)

### Certificates

3.1 certificate according EN 10204 (3.2 certificate also deliverable on request)

Size MM	Kg/mtr.	Tol. Diam.	Tol. thickness	Execution	Max press 20°C bar	Max press 150°C bar
25 x 1,2	0,715	± 0,13	± 0,12	CC, CD, BC en BD	150	98
25,4 x 1,6	0,954	± 0,13	± 0,16	CC, CD, BC en BD	150	98
32 x 1,2	0,925	± 0,16	± 0,12	CC, CD, BC en BD	130	80
38 x 1,2	1,106	± 0,19	± 0,12	CC, CD, BC en BD	110	69
38,1 x 1,5	1,371	± 0,19	± 0,15	CC, CD, BC en BD	110	69
38,1 x 1,6	1,458	± 0,19	± 0,16	CC, CD, BC en BD	110	69
50,8 x 1,5	1,852	± 0,25	± 0,15	CC, CD, BC en BD	87	50
50,8 x 1,6	1,971	± 0,25	± 0,16	CC, CD, BC en BD	87	50
51 x 1,2	1,496	± 0,25	± 0,12	CC, CD, BC en BD	87	50
63,5 x 1,5	2,329	± 0,32	± 0,15	CC, CD, BC en BD	87	50
63,5 x 1,6	2,480	± 0,32	± 0,16	CC, CD, BC en BD	87	50
76,1 x 1,5	2,802	± 0,38	± 0,15	CC, CD, BC en BD	72	45
76,1 x 1,6	2,985	± 0,38	± 0,16	CC, CD, BC en BD	72	45
76,1 x 2	3,711	± 0,38	± 0,2	CC, CD, BC en BD	72	45
101,6 x 2	4,988	± 0,76	± 0,2	CC, CD, BC en BD	59	36



## Inhoud

### Tubes

#### 9

Dairy tube EN-10357 serie D	9
Dairy tube EN-10357 serie D	9
Dairy tube EN-10357 1.4307 / 304L	10
Dairy tube EN-10357 1.4404 / 316L	10

### Pre-insulated tube systems 11

### Welding bends and Tees 12

Bend long 90° R≈1.5D (ISO2851 / BS4825)	12
Bend long 45° R≈1.5D (ISO2851 / BS4825)	13
Welding bend short 90° (BA3)	13
Welding bend short 45° (BA3)	14
Welding bend 180°	15
Tee short BS-4825 /ISO-2851	15

### Pipetite® 16

### T-Bends 17

#### Symetric Tee Q-Plus 17

Tee symetric DIN 11852 TS Type Q-Plus	17
Tee symetric BS-4825 / ISO-2851	18
Reducing Tee short	19
Tee bend	19
Reducing Tee long	20
Double tee bend	20
Reducer concentric	21
Reducer eccentric	22
Cross piece short	23
Cross piece	23
Convex bottom	24
Pipe support heavy	25
Pipe support heavy with shaft	25
Pipe support light	26
Pipe support on shaft (light)	26

### Couplings 27

#### 27

#### SMS screw coupling (SMS 1145)

Nut SMS	27
Welding male part SMS	28
Welding Liner SMS	28
Gasket SMS	29
Blind nut SMS	29
Blind nut complete SMS	30
Welding Liner long SMS	30
Reducing male part SMS	31
Reducing Liner SMS	31

#### BS 4825-4 + ISO-2853 IDF

**32**

Male part IDF BS-4825-4 / ISO-2853	32
Liner IDF BS-4825-4 / ISO-2853	32
Nut hex. IDF BS 4825	33
Round nut IDF BS 4825	33
Gasket L-profile IDF BS 4825-4 / ISO 2853	34
Gasket T-profile IDF BS4825-4 / ISO 2853	34

**BS 4825-5 RJT Coupling**

Nut RJT BS4825-5	35
Male part RJT BS4825-5	35
Liner RJT BS4825-5	36
Gasket RJT BS4825-5	36
Nut DS	37
Welding male part DS	37
Welding Liner DS	38
Gasket DS	38

**DIN 11851 Coupling****39**

Union complete DIN 11851	39
Male part DIN 11851	40
Male part DIN 11851 / ISO	40
Liner DIN 11851	41
Liner part DIN 11851 / ISO	41
Expanding male part DIN 11851	42
Expanding liner DIN 11851	42
Nut DIN 11851	43
Gasket DIN 11851	43
Gasket high DIN 11851	44
Gasket with lip DIN 11851 (L-profiel)	44

**The Hygienic S.K.S. Union****45**

SKS gasket set DIN 11851 EHEDG	46
SKS liner DIN 11851 EHEDG	46
Blind nut flat DIN 11851	47
Blind nut with boss DIN 11851	47
Blind nut complete DIN 11851	48
Gasket disc for blind nut DIN 11851	48
Liner blank DIN 11851 DB	49
Male part blank DIN 11851	49
Male part threaded outside DIN 11851/BSP CT	50
Liner threaded outside DIN 11851/BSP DT	50
Male part threaded inside DIN 11851/BSP CT	51
Liner threaded inside DIN 11851 DT	51
Hose male part type DIN DIN 11851	52
Hose male part forced DIN 11851	52
Hose liner type Din DIN 11851	53
Hose liner forced DIN 11851	53
Hygienic Hose Connections (RMO)	54
<b>Clamp Coupling EN DIN32676 + ISO 2852</b>	<b>55</b>
Clamp ferrule ISO 2852	55
Clampferrule short ISO 2852	55
Welding ferrule DIN 32676 KL Serie C	56
Clamp ferrule ASME 3A L14AM	56
Blind ferrule Clamp DIN 32676 / ISO2852	56
Gasket Clamp union	57
Gasket Clamp DIN 32676 Serie C	57
Clamp light type ISO 2582 Clamp	58

Clamp heavy type ISO 2852 Clamp	58
<b>DIN 11864 Couplings</b>	<b>59</b>
Male part DIN 11864 A-1 Serie C	59
Liner part DIN 11864 A-1 Serie C	60
Nut DIN 11864-1 F	60
Flange with groove DIN 11864 A-2 Serie C	61
Flange with collar DIN 11864 A-2 Serie C	61
Assembly set flange connection DIN 11864-2-A	62
Clamp ferrule with groove DIN 11864 A-3 Serie C	62
Clamp ferrule with collar DIN 11864 A-3 Serie C	63
Clamp heavy DIN 11864/11853	63
Gasket O-ring DIN 11864 A Serie C	64
<b>DIN 11853 Connection</b>	<b>65</b>
Male part DIN 11853	65
Liner DIN 11853 serie C	66
Nut DIN 11853 F	66
Flange with groove DIN 11853-2 serie C	67
Flange with collar DIN 11853-2 serie C	67
Assembly set flange connection DIN 11853-2-A	68
Clamp ferrule with groove DIN 11853-3 serie C	68
Clamp ferrule with collar DIN 11853-3 serie C	69
Clamp heavy DIN 11864/11853	69
Gasket O-ring DIN 11853 Serie C	70

**Also applicable****71**

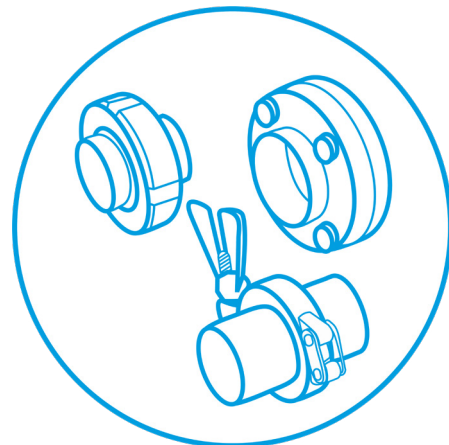
Flange connection DIN	71
FGN Flange connection	71
Flange EN 1092-1 type 01	72
Flange gasket	72
Collar with Aluminium flange A	73

**Couple pieces****73**

Sawing tool	74
Spanner Din	74

**Mill products****75**

Hose connection for hygienic application	76
Hose food grade with connection acc. DIN 11851	76





## Product Recovery System

The different components in the Product Recovery program are also known as 'pigging systems'. The principle is easy but also brilliant.

The phenomenon originally came from the Oil-industry, but is already applied in many other industries. Product Recovery Systems are related to cleaning. However the systems are more than just cleaning systems. With some creativity a Product Recovery system can reduce a lot of costs and it is a tool to meet your 'green' goals and objectives.

### The advantages of a Product Recovery System are

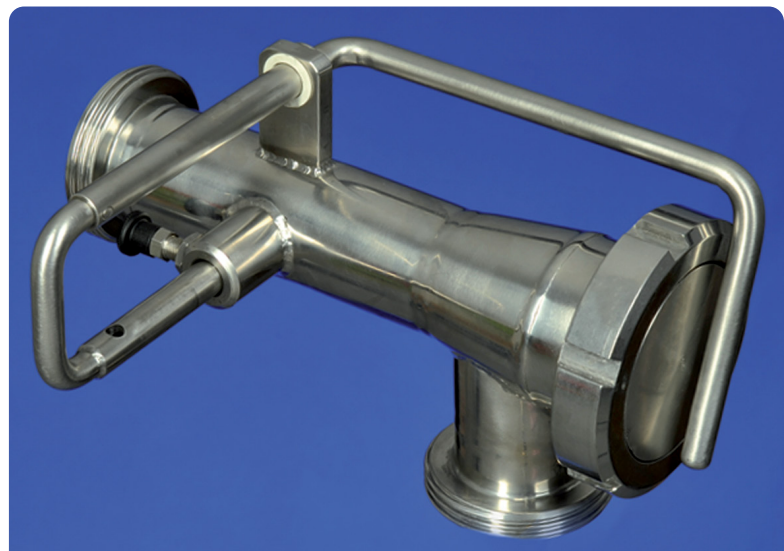
- Mechanical cleaning of the tube
- Cleaning without dismounting (in-line)
- Tube capacity almost 100% useable
- Reduce CIP time
- Rapid conversion to a new product
- Mixproof
- No influence of air in the tube (froth, oxidation etc.)
- Multifunctional tube network
- The tube does not have to be self-draining

A Product Recovery system is a simple principle but can be activated in different ways. The way of moving the plug (also pig or mole) occurs by a floating medium based on pressure. If the pressure is not generated and monitored properly it could be very dangerous for the user and for the system.

**The Product Recovery Systems of S.K.S. are unique** because they regulate the flow of the floating medium behind the plug and therefore can guarantee a low, constant speed. The resistance becomes lower and lower as the tube is pressed empty. This makes our system safer than other systems. Another advantage is that the tube network can be made of tubes which are less thick and with the standard components.

*The Product Recovery System of S.K.S. is build of different components within a reach of DN 25 / 1" up to DN 150 / 6". With the unique Cyclone system, the pressures that are build up can be reduced in a slow and safe way.*

For more information according these systems or the components we refer to the documentation or feel free to contact us.





## Q-Fitt Hygienic Components

The pipe is an important part of your production process and gets deservedly the right attention lately. As a result of the application, the corrosion requirements and regulatory guidelines, not all material that is available, is applicable in your situation. A good specification is necessary to make sure your choices will actually be delivered.

In the huge and diverse range of welding fittings for sanitary pipelines available worldwide, S.K.S. has made a selection for you and provides the brand Q-Fitt. With this brand we highly streamlined our range. As your specialist in stainless steel tube components, we see it as our duty to fulfil this role. We as stockholder and supplier to the process industries, benefit from this slimming. With the downsizing of the possibilities we have come to the following package composition which suits the combination cleanability, weldability, corrosion resistance, PED component requirement and European regulations best.

All Q-Fitt components are provided with a Q-Fitt logo. This guarantees the quality according to the following specifications:

- Complies with the current standards EN-10357 BC / EN-10217-7 W2Ab, DIN11852, BS4825
- Dimensions according to: EN-10357 Series A (mm sizes) and D (inch sizes).
- All components up to and including DN125 have an Ra value of  $<0.8\mu\text{m}$  (also on the weld seam)
- All components up to and including DN125 have been annealed in accordance with PED and therefore have better corrosion resistance.
- Tubes are standard provided with caps.
- Components DN150 - DN200 are not annealed and have a Ra value in accordance with the standard.

The Q-Fitt line consists of all parts that are specified within the standards. Parts that are not standardised, e.g. T-bends or reducers larger than 3 steps, are not included in the Q-fitt range.

All Q-Fitt products are marked in the lists with an orange background.

Tube	EN-10357 BC / EN-10217-7 W2Ab Dimensions according to EN-10357 series A, B and D: The Q Fitt tube has a Ra value $<0.8\mu\text{m}$ (also on the weld), is annealed and full bath pickled. In addition, the tube is supplied with endcaps as standard.
Bend	DIN 11852 BS (short) and BL (long), ISO 2851 (long) and BS 4825-2 (long)
Tee	DIN 11852 TS (long) and TK (short), ISO 2851 (long) and BS 4825-2 (long and short)
Reducer	DIN 11852 RK (con.) and RE (exc.), ISO 2851 (con./exc.) and BS 4825 (con./exc.)
Unions	DIN 11853, DIN 11851 S.K.S. execution, DIN 32676 and SMS 1145.



### Package composition

Tubes according to EN10357 BC / EN10217-7 W2Ab

Welding bends according to DIN 11852 BS (short) and BL (long) and BS 4825-2 (short and long)

T-Bends according to DIN 11852 TS (long) and TK (short) and BS 4825-2 (long and short)

Reducers DIN 11852 RK (con.) and RE (exc.) and BS 4825 (con./exc.)

Connections with the same quality and hygienic class are:

- Screw connections according to 11864-1, DIN 11853-1, DIN11851 SKS edition;
- Flange connections according to DIN 118641-2 and DIN 11853-2
- Clamp connections according to DIN 11864-3, DIN 11853-3, DIN32676 and ASME BPE

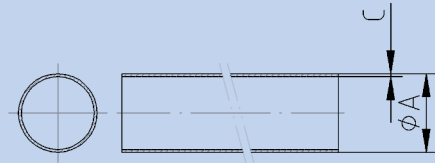
The Q-Fitt weld fittings are not only manufactured to the standards, but are also marked with the necessary information. As a result, the required traceability is guaranteed and there is no cumbersome and costly certificates procedure necessary. In combination with the underlying system of S.K.S., we meet the requirements according to EN / 1935/2004.

Summarizing adjusts the Q-Fitt range in multiple ways in your application:

- Tubes are EHEDG and EC1935/2004 certified
- Guarantee of Quality
- Risk cover for legal guidelines
- Guarantee traceability
- Always current specification to your suppliers
- Appropriate and consistent piping
- Easily controllable at receipt

Q-Fitt is available in sizes from the relevant standards. The specific data on tolerances, radius and mounting dimensions are of course available on request. Any changes to the norms and standard, we will of course apply the Q-Fitt specification. This brand Q-Fitt will always meet all current guidelines.



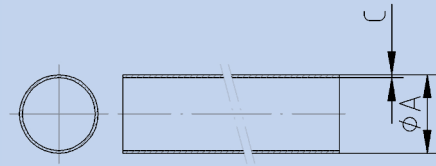


DAIRY TUBE EN-10357 SERIE D

A	B	C	Kg				Q-Fitt	Q-Plus			
				304L matt CC (W2b)	304L BC blank H2 (W2Rb)	304L matt BC H2 W2Ab	304L matt BC H3 W2Ab	304L matt BC H3 W2Ab	304L polished CD	304L polished BD H3	304L polished BD H3
25,0		1,2	0,715	01733213	01724213	01714213IT	01714213QF	01714213	02733213	02714213IT	02714213
25,4		1,6	0,954	01834213	01824213	01814213IT	01814213QF	01814213	02834213	02814213IT	02814213
32,0		1,2	0,925	01733273	01724273	01714273IT		01714273	02733273	02714273IT	02714273
38,0		1,2	1,106	01733353	01724353	01714353IT		01714353	02733353	02714353IT	02714353
38,1		1,5	1,375	01513353	01624353	01614353IT	01614353QF	01614353	02513353	02614353IT	02614353
38,1		1,6	1,458	01834353	01824353	01814353IT		01814353	02834353	02814353IT	02814353
50,8		1,5	1,852	01513453	01624453	01614453IT	01614453QF	01614453	02513453	02614453IT	02614453
50,8		1,6	1,971	01834453	01824453	01814453IT		01814453	02834453	02814453IT	02814453
51,0		1,2	1,496	01733453	01724453	01714453IT		01714453	02733453	02714453IT	02714453
63,5		1,5	2,329	01513541	01624541	01614541IT	01614541QF	01614541	02513541	02614541IT	02614541
63,5		1,6	2,480	01733541	01724541	01714541IT		01714541	02733541	02714541IT	02714541
76,1		1,5	2,984	01513591	01624591	01614591IT	01614591QF	01614591	02513591	02614591IT	02614591
76,1		1,6	2,985	01733591	01724591	01714591IT		01714591	02733591	02714591IT	02714591
76,1		2,0	3,711	01733592	01724592	01714592IT		01714592	02733592	02714592IT	02714592

DAIRY TUBE EN-10357 SERIE D

A	B	C	Kg				Q-Fitt	Q-Plus			
				316L matt CC (W2b)	316L BC blank H2 (W2Rb)	316L matt BC H2 W2Ab	316L matt BC H3 W2Ab	316L matt BC H3 W2Ab	316L polished CD	316L polished BD H3	316L polished BD H3
25,0		1,2	0,715	01739213	01728213	01719213IT	01719213QF	01719213	02739213	02719213IT	02719213
25,4		1,6	0,954	01839213	01828213	01819213IT	01819213QF	01819213	02839213	02819213IT	02819213
32,0		1,2	0,925	01739273	01728273	01719273IT		01719273	02739273	02719273IT	02719273
38,0		1,2	1,106	01739353	01728353	01719353IT		01719353	02739353	02719353IT	02719353
38,1		1,5	1,375	01518353	01628353	01619353IT	01619353QF	01619353	02518353	02619353IT	02619353
38,1		1,6	1,458	01839353	01828353	01819353IT		01819353	02839353	02819353IT	02819353
50,8		1,5	1,852	01518453	01628453	01619453IT	01619453QF	01619453	02518453	02619453IT	02619453
50,8		1,6	1,971	01839453	01828453	01819453IT		01819453	02839453	02819453IT	02819453
51,0		1,2	1,496	01739453	01728453	01719453IT		01719453	02739453	02719453IT	02719453
63,5		1,5	2,329	01518541	01628541	01619541IT	01619541QF	01619541	02518541	02619541IT	02619541
63,5		1,6	2,480	01739541	01728541	01719541IT		01719541	02739541	02719541IT	02719541
76,1		1,5	2,984	01518591	01628591	01619591IT	01619591QF	01619591	02518591	02619591IT	02619591
76,1		1,6	2,985	01739591	01728591	01719591IT		01719591	02739591	02719591IT	02719591
76,1		2,0	3,711	01739592	01728592	01719592IT		01719592	02739592	02719592IT	02719592



DAIRY TUBE EN-10357 1.4307 / 304L

Divers sizes	A	B	C	Kg	304L matt CC (W2b)	304L BC bright H2 (W2Rb)	304L matt BC H2 W2Ab	304L matt BC H3 W2Ab	304L polished CD	304L polished BD H2	304L polished BD H3
1"	25,4		1,25	0,76	01513213	01624213	01614213IT	01614213	02513213	02614213IT	02614213
1,25"	31,8		1,25	0,956	01513273	01624273	01614273IT	01614273	02513273	02614273IT	02614273
4"	101,6		1,5	3,76	01513671	01624671	01614671IT	01614671	02513671	02614671IT	02614671
DN125	129,0		2,00	6,360	01364754			01374754	02364754		
DN150	154,0		2,00	7,612	01364790			01374790	02364790		
DN200	204,0		2,00	10,116	01364834				02364834		

DAIRY TUBE EN-10357 1.4404 / 316L

Divers sizes	A	B	C	Kg	316L matt CC (W2b)	316L BC bright H2 (W2Rb)	316L matt BC H2	316L matt BC H3	316L polished CD	316L polished BD H2	316L polished BD H3
1"	25,4		1,25	0,760	01518213	01628213	01619213IT	01619213	02518213	02619213IT	02619213
1,25"	31,8		1,25	0,956	01518273	01628273	01619273IT	01619273	02518273	02619273IT	02619273
4"	101,6		1,50	3,760	01518671	01628671	01619671IT	01619671	02518671	02619671IT	02619671
DN125	129,0		2,00	6,360	01368754		01376754IT	01376754	02368754	02376754IT	02376754
DN150	154,0		2,00	7,612	01368790		01376790IT	01376790	02368790	02376790IT	02376790
DN200	204,0		2,00	10,116	01368834			01376834	02368864		02376834

CC = Unannealed  
 BC = Annealed  
 CD = Unannealed polished  
 BD = Annealed polished

H2 = Ra < 0,8/1,6  
 H3 = Ra < 0,8/0,8

W2b = Unannealed/pickled  
 W2Rb = Bright annealed  
 W2Ab = Annealed/pickled



## Pre-insulated tube systems

The advantages of the pre-insulated tube systems and our experience and knowledge of process tubes are the best base for your process tubes. The possibilities are unlimited within a range from  $-200^{\circ}\text{C}$  up to  $+350^{\circ}\text{C}$ . Especially in tube bridges a lot can be saved when looking at the investment costs, installation time but mainly the energy costs.

### The Mix of 4 variable components

1. **Transport tube:** all materials with a diameter up to 800mm.
2. **Isolation:** Customised materials based on the temperature of the application.
3. **Jacket:** Choice between 5 robust sorts of materials.
4. **Options:** Divers options possible such as tracing, leak-detection etc.

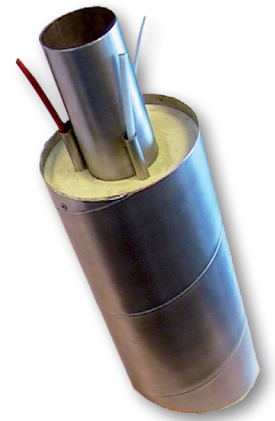
The combination of these variables is the optimal configuration for your application. The choice depends on the technical and economical input.

### Features

- 100% waterproof
- High mechanical resistance
- Effective corrosion protection of the tube
- Resistant against chemical products and UV
- Tracing of the tube is possible
- Sandwichsystem
- Easy installation of the products

### Advantages

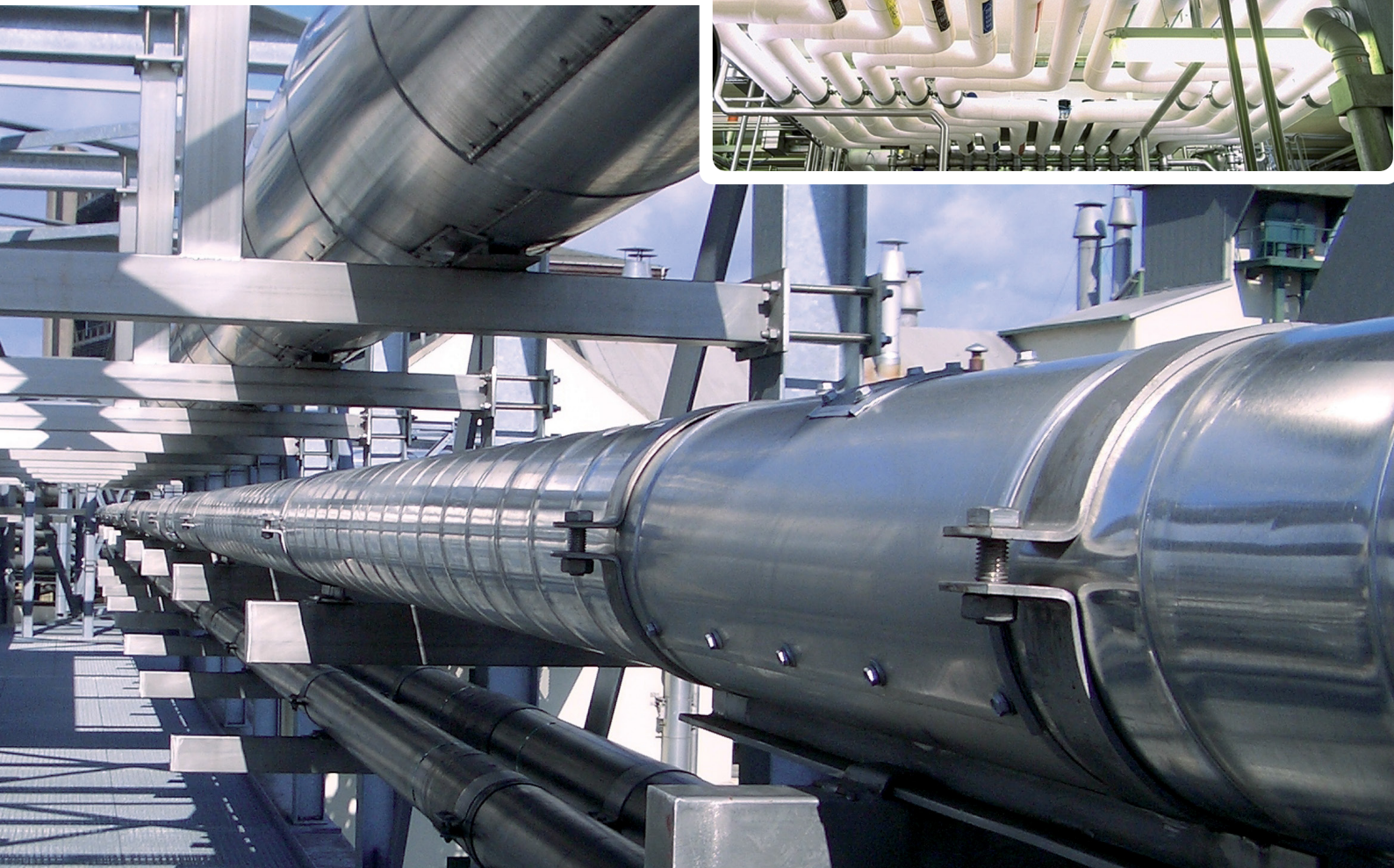
- Well cleanable
- Constant isolation during the lifetime
- Quick payback time
- No source of infection
- Less loss of energy
- Low maintenance costs



### Customised delivery

Every application is different. That is why the isolation material (based on the temperature and the desired result) is calculated regarding to the size and composition of the isolation material. This can be adapted to your specific needs. The system has a few minor flaws, but cancel out to the enormous advantages it offers. Besides the possibility of the standard tube components, S.K.S. can also isolate the short tube installations, skids-fittings or machine parts. We can even produce these products for you if we get a drawing for it.

Why should you isolate afterwards when it can be done much better in an optimal situation beforehand?





## ISO 2851 and BS 4825-2 (Welding bends and Tees)

Because there is no existing norm for fitting in relation to the EN-10357-D tubes norm, S.K.S. has selected these fittings in het catalogue.

It consists welding bends and tees from the norms BS-4825 and ISO 2851. In the catalogue there are also fittings suitable in the size ranges which are not normalized. We completed the range with all available executions. EN-10357-D consists a range of Inch sizes with very small size differences in diameter and wall thickness. These small differences are not always mentioned in daily use but can cause some problems.

If possible the inch range BS, ISO or other is mentioned.

- BS-4825 inch or British Inch is in the international business a common standard and looks like the American Inches according ASTM ASME A-270. The dimensions until 76.1 have a wall thickness 1.6mm.
- ISO-2851 inch or SMS sizes are used worldwide and especially in the dairy market. The diameters until 51mm have a wall thickness 1.2mm.
- The Dutch inches are not normalized and are mostly used in the Netherlands. The outside diameter is the same as the inches according BS-4825, but with a different wall thickness. 1.5mm or 1.25mm.

In several fittings and couplings there is only one execution in one size range. This is caused by the fact that we combined 3 size families in one documentation for EN-10357-D.

### Versions

Bends short and long in 45°, 90° and 180°.

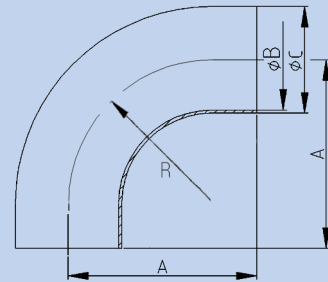
Tees short and long in symmetric and reducing versions

Reducers RK conical and RE eccentric

### Finish

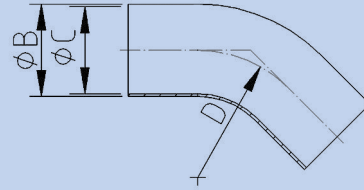
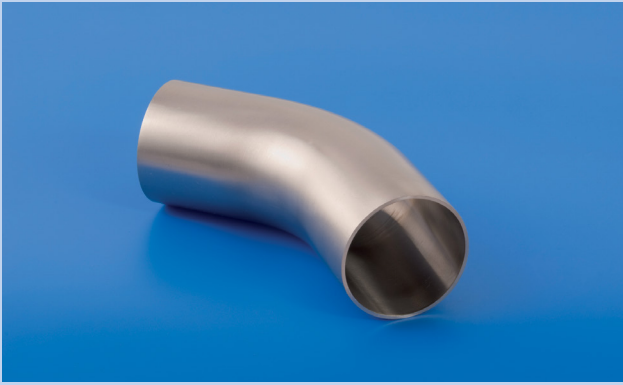
Outside : bright, polished or scaled

Inside : bright, pickled, polished or scaled



BEND LONG 90°  $R \approx 1.5D$  (ISO2851 / BS4825)

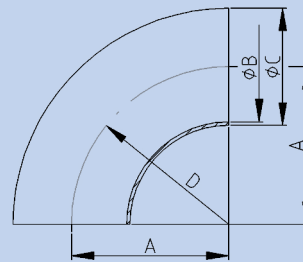
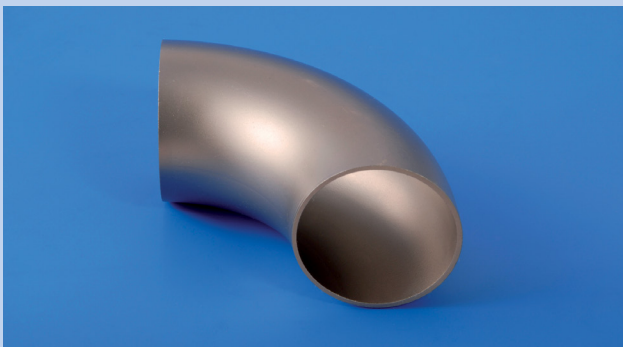
MM	A	B	C	R	Kg	304L	316L	304L Polished	316L Polished
25 x 1.2	65,0	22,6	25,0	37,5	0,09	04734004ISO	04738004ISO		
25,4 x 1,6	65,0	22,2	25,4	37,5	0,11	04234004BS	04238004BS	04734004BS	04738004BS
38 x 1.2	85,0	35,6	38,0	57,0	0,16	04734008ISO	04738008ISO		
38,1 x 1,6	85,0	34,9	38,1	57,0	0,21	04234008BS	04238008BS	04734008BS	04738008BS
50,8 x 1,6	110,0	47,6	50,8	76,5	0,37	04234010BS	04238010BS	04734010BS	04738010BS
51 x 1,2	110,0	48,6	51,0	76,5	0,28	04734010ISO	04738010ISO		
63,5 x 1,6	135,0	60,3	63,5	95,3	0,57	04234012BS	04238012BS	04734012BS	04738012BS
63,5 x 1,6	135,0	60,3	63,5	95,3	0,57	04734012ISO	04738012ISO		
76,1 x 1,6	155,0	73,0	76,2	114,2	0,78	04234014BS	04238014BS	04734014BS	04738014BS
76,1 x 2	155,0	72,1	76,1	114,2	0,78	04734014ISO	04738014ISO		
101,6 x 2	195,0	97,6	101,6	152,5	1,65	04734018ISO	04738018ISO		
101,6 x 2	195,0	97,6	101,6	152,5	1,65	04234018BS	04238018BS	04734018BS	04738018BS



BEND LONG 45° R≈1.5D (ISO2851 / BS4825)



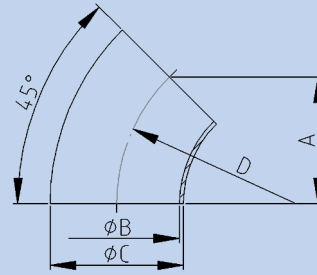
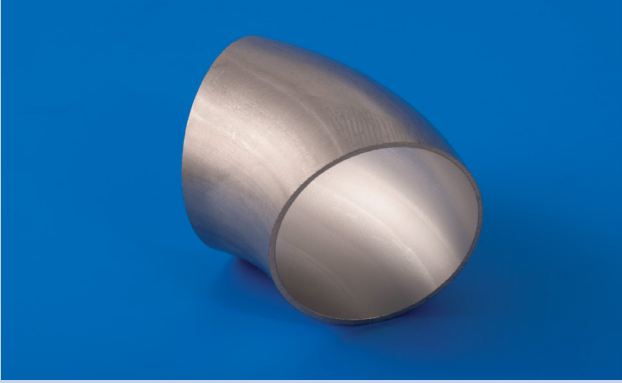
MM	A	B	C	D	Kg	304L bright	316L bright	304L Polished	316L Polished
25 x 1.2		22,2	25,4	37,5	0,085	04034254ISO	04038254ISO	04734104ISO	04738104ISO
25,4 x 1,6		22,2	25,4	37,5	0,100	04234104BS	04238104BS	04734104BS	04738104BS
38 x 1.2		34,9	38,1	57,0	0,160	04034258ISO	04038258ISO	04734108ISO	04738108ISO
38,1 x 1,6		34,9	38,1	57,0	0,190	04234108BS	04238108BS	04734108BS	04738108BS
50,8 x 1,6		47,6	50,8	76,5	0,350	04234110BS	04238110BS	04734110BS	04738110BS
51 x 1,2		47,6	50,8	76,5	0,280	04034260ISO	04038260ISO	04734110ISO	04738110ISO
63,5 x 1,6		60,3	63,5	95,3	0,550	04234112BS	04238112BS	04734112BS	04738112BS
63,5 x 1,6		60,3	63,5	95,3	0,570	04034262ISO	04038262ISO	04734112ISO	04738112ISO
76,1 x 1,6		73,0	76,1	114,2	0,760	04234114BS	04238114BS	04734114BS	04738114BS
76,1 x 2		72,1	76,1	114,2	0,760	04034264ISO	04038264ISO	04734114ISO	04738114ISO
101,6 x 2		97,6	101,6	152,5	1,610	04034268ISO	04038268ISO	04734118ISO	04738118ISO
101,6 x 2		97,6	101,6	152,5	1,610	04234118BS	04238118BS	04734118BS	04738118BS



WELDING BEND SHORT 90° (BA3)

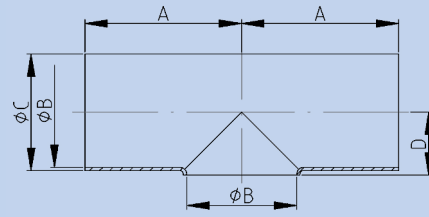
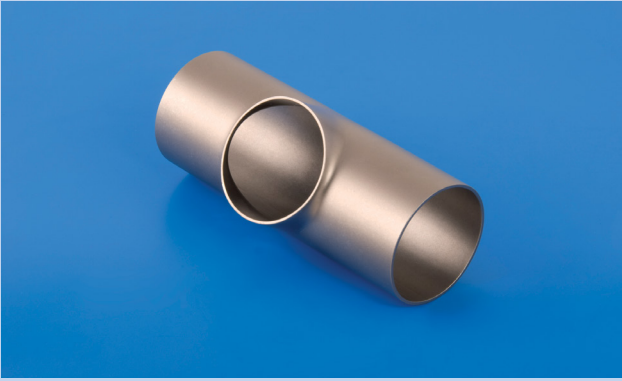


MM	A	B	C	D	Kg	304L matt	316L matt	304L Polished	316L Polished
25,4 x 1,25 (1")	27,5	22,9	25,4	27,5	0,03	04034004QF	04038004QF	04634004	04638004
31,8 x 1,25(1,25")	35,0	29,3	31,8	35,0	0,06	04034006QF	04038006QF	04634006	04638006
38,1 x 1,5 (1,5")	45,0	35,1	38,1	45,0	0,10	04034008QF	04038008QF	04634008	04638008
50,8 x 1,5 (2")	67,5	47,8	50,8	67,5	0,19	04034010QF	04038010QF	04634010	04638010
63,5 x 1,6 (2,5")	82,5	60,3	63,5	82,5	0,29	04034012QF	04038012QF	04634012	04638012
76,2 x 1,6 (3")	95,0	72,9	76,2	95,0	0,50	04034014QF	04038014QF	04634014	04638014
101,6x2,11 (4")	133,5	97,4	101,6	133,5	1,10	04034018QF	04038018QF	04634018	04638018



**WELDING BEND SHORT 45° (BA3)**

Inch	A	B	C	D	Kg	316L matt	316L Polished
25,4 x 1,25 (1")		22,9	25,4	27,5	0,015	04038204	04638204
31,8 x 1,25 (1,25")		29,3	31,8	35,0	0,030	04038206	04638206
38,1 x 1,5 (1,5")		35,1	38,1	45,0	0,050	04138208	04638208
50,8 x 1,5 (2")		47,8	50,8	67,5	0,085	04138210	04638210
63,5 x 1,6 (2,5")		60,2	63,5	82,5	0,145	04138212	04638212
76,2 x 1,6 (3")		72,8	76,1	95,0	0,250	04138214	04638214
101,6 x 2,0 (4")		97,4	101,6	133,5	1,550	04138218	04638218



TEE SHORT BS-4825 /ISO-2851

MM	A	B	C	D	Kg	304L matt	316L matt	304L Polished	316L Polished
25 x 1.2	55,0	22,60	25,0		0,06			04634429ISO	04638429ISO
25,4 x 1,6	43,5	22,60	25,4	14,2	0,06	-	04138429BS	-	04638429BS
38 x 1.2	70,0	35,60	38,0		0,14			04634433ISO	04638433ISO
38,1 x 1,6	63,5	35,60	38,1	21,6	0,14	-	04138433BS	-	04638433BS
50,8 x 1,6	88,5	48,60	50,8	29,1	0,23	-	04138435BS	-	04638435BS
51 x 1,2	82,0	48,60	51,0		0,23			04634435ISO	04638435ISO
63,5 x 1,6	113,5	60,30	63,5	35,3	0,34	-	04138437BS	-	04638437BS
63,5 x 1,6	105,0	60,30	63,5		0,34			04634437ISO	04638437ISO
76,1 x 1,6	133,5	72,10	76,1	41,4	0,62	-	04138439BS	-	04638439BS
76,1 x 2	110,0	72,10	76,1		0,62			04634439ISO	04638439ISO
101,6 x 2	173,5	97,60	101,6	54,7	0,89	-	04138443BS	-	04638443BS
101,6 x 2	150,0	97,60	101,6		0,89			04634443ISO	04638443ISO



## Pipetite® The hygienic wall boot system

### “A new approach to an old problem”

The current solutions for pipe connections through walls are visually and hygienically flawed. They often do not seal properly and are not flexible or uniform. With the Pipetite® program, S.K.S. offers a true solution to this problem.

Pipetite® has been developed based on the above practical shortcomings and can therefore be used in any environment.

All models are self-sealing, hygienic and easy to fit.

### Pipetite® is simple and effective

- 6 sizes for pipe diameters up to 380 mm
- Hygienic white silicone and 316 stainless steel
- Totally self-sealing and maintenance-free
- Vibration-absorbing
- Waterproof
- Resistant to temperatures up to 260°C (medium pipe)
- Quick and easy installation
- Long lifespan

Pipetite is available for wall connections (Pipetite® and ReBoot®), pipe connections (Pipe n Pipe®) or plate connections (Tube Grommets and Hose grommets).

As an option, the Pipetite® range can be made fireproof by using traditional firestop products.

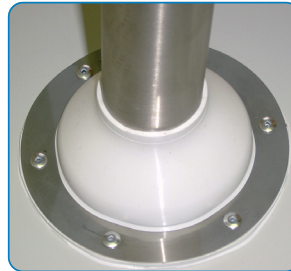
Pipetite® can be used in many common situations. The connector surrounding the pipe is the same for all models. You trim the boot to size and slide the wall connector over the pipe. ReBoot® models can be easily fitted around the existing situation and are sealed with a clip. The actual connection with the application for the pipe is different for every model.

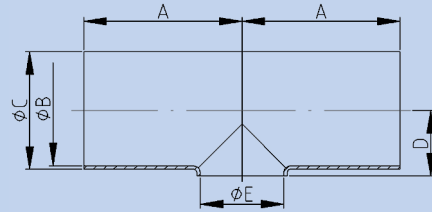
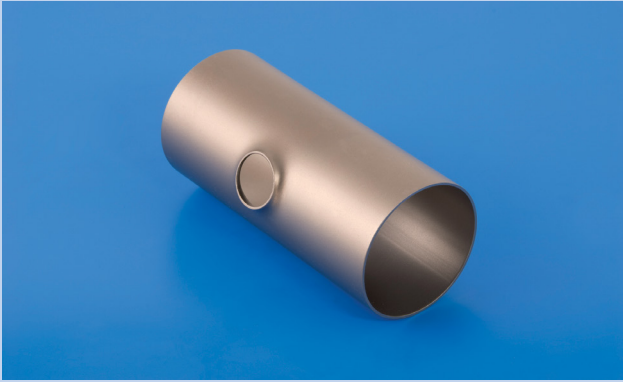
- The Pipetite® and ReBoot® can be easily fitted on walls or ceilings.



- The Pipe n Pipe® is made for pipe connections of 4"/NW100 or 6"/NW150.
- Grommets are used for pipe or hose connections through machine walls or stainless steel wall plates up to 3 mm thick. Multi range is available.
- A flat range for tank or wall boot and cover.

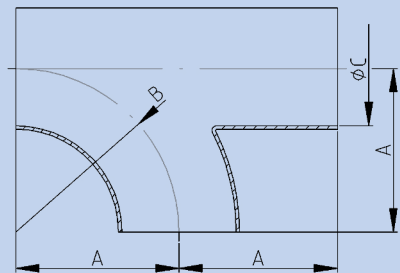
*In case you need assistance in choosing the right Pipetite®, feel free to contact us.*





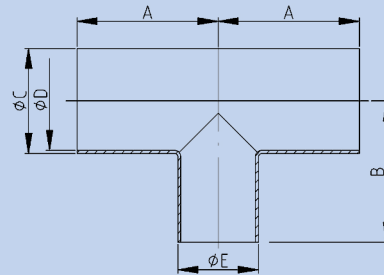
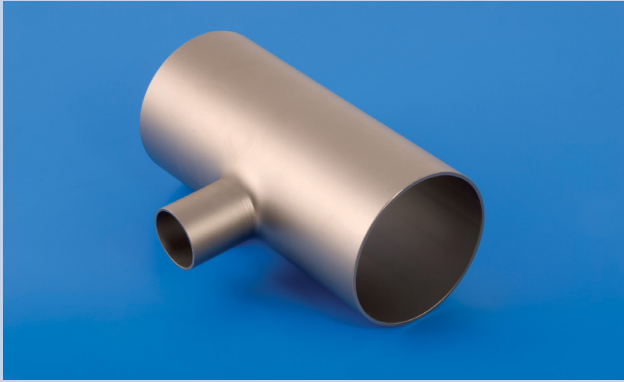
**REDUCING TEE SHORT**

Inch	A	B	C	D	E	Kg	304L matt	316L matt	304L polished	316L polished
1,5" - 1"	60,0	35,1	38,1	20,0	22,9	0,140	11134720	11138720	12134720	12138720
2" - 1"	70,0	47,8	50,8	27,5	22,9	0,220	11134730	11138730	12134730	12138730
2" - 1,5"	70,0	47,8	50,8	27,5	35,1	0,230	11134732	11138732	12134732	12138732
2,5" - 1"	80,0	60,2	63,5	36,0	22,9	0,340	11134740	11138740	12134740	12138740
2,5" - 1,5"	80,0	60,2	63,5	36,0	35,1	0,340	11134742	11138742	12134742	12138742
2,5" - 2"	80,0	60,2	63,5	36,0	47,8	0,340	11134743	11138743	12134743	12138743
3" - 1"	90,0	72,8	76,1	44,0	22,9	0,620	11134749	11138749	12134749	12138749
3" - 1,5"	90,0	72,8	76,1	44,0	35,1	0,620	11134751	11138751	12134751	12138751
3" - 2"	90,0	72,8	76,1	44,0	47,8	0,620	11134752	11138752	12134752	12138752
3" - 2,5"	90,0	72,8	76,1	44,0	60,2	0,620	11134753	11138753	12134753	12138753
4" - 1"	100,0	97,4	101,6	56,0	22,9	0,890	11134768	11138768	12134768	12138768
4" - 1,5"	100,0	97,4	101,6	56,0	35,1	0,890	11134770	11138770	12134770	12138770
4" - 2"	100,0	97,4	101,6	56,0	47,8	0,890	11134771	11138771	12134771	12138771
4" - 2,5"	100,0	97,4	101,6	56,0	60,5	0,890	11134772	11138772	12134772	12138772
4" - 3"	100,0	97,4	101,6	56,0	72,8	0,890	11134773	11138773	12134773	12138773



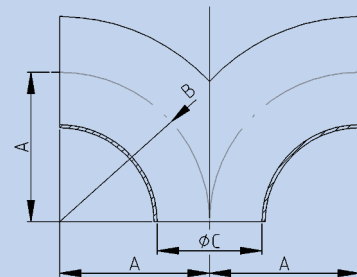
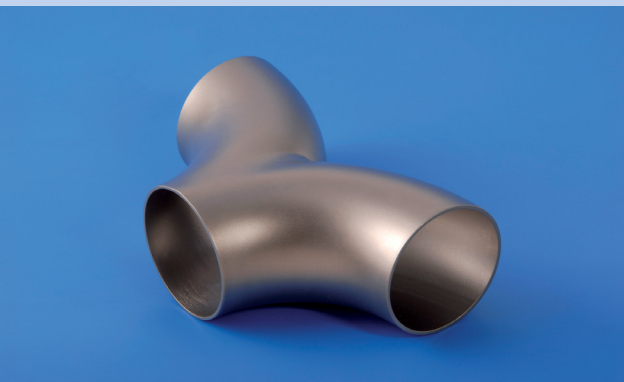
**TEE BEND**

Inch	A	B	C	D	E	Kg	304L matt	316L matt	304L polished	316L polished
1"	26,5	27,5	22,9			0,100	04134454	04138454	04634454	04638454
1,5"	44,0	45,0	35,1			0,180	04134458	04138458	04634458	04638458
2"	66,5	67,5	47,8			0,280	04134460	04138460	04634460	04638460
2,5"	81,5	82,5	60,2			0,530	04134462	04138462	04634462	04638462
3"	94,0	95,0	72,8			0,720	04134464	04138464	04634464	04638464
4"	132,5	133,5	97,4			1,510	04134468	04138468	04634468	04638468



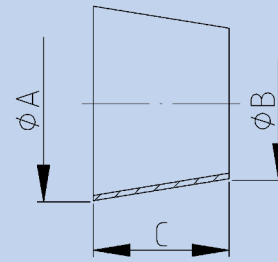
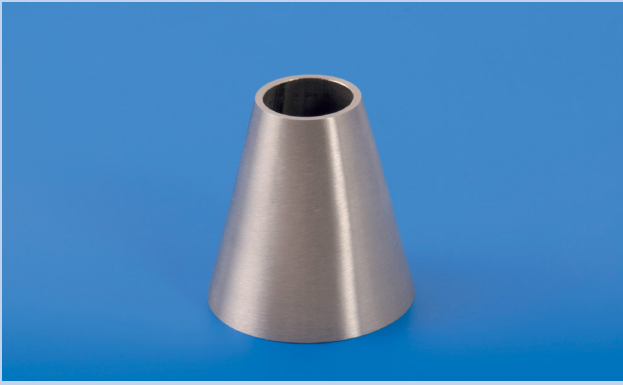
**REDUCING TEE LONG**

Inch	A	B	C	D	E	Kg	304L matt	316L matt	304L polished	316L polished
1,5" - 1"	60,0	56,0	38,1	35,1	25,4	0,150	11134520	11138520	12134520	12138520
2" - 1"	70,0	63,5	50,8	47,8	25,4	0,230	11134530	11138530	12134530	12138530
2" - 1,5"	70,0	67,5	50,8	47,8	38,1	0,240	11134532	11138532	12134532	12138532
2,5" - 1"	80,0	72,0	63,5	60,2	25,4	0,440	11134540	11138540	12134540	12138540
2,5" - 1,5"	80,0	76,0	63,5	60,2	38,1	0,450	11134542	11138542	12134542	12138542
2,5" - 2"	80,0	78,5	63,5	60,2	50,8	0,460	11134543	11138543	12134543	12138543
3" - 1"	90,0	80,0	76,1	72,8	25,4	0,890	11134549	11138549	12134549	12138549
3" - 1,5"	90,0	84,0	76,1	72,8	38,1	0,900	11134551	11138551	12134551	12138551
3" - 2"	90,0	86,5	76,1	72,8	50,8	0,910	11134552	11138552	12134552	12138552
3" - 2,5"	90,0	90,0	76,1	72,8	63,5	0,920	11134553	11138553	12134553	12138553
4" - 1"	100,0	87,5	101,6	97,4	25,4	0,960	11134568	11138568	12134568	12138568
4" - 1,5"	100,0	93,0	101,6	97,4	38,1	0,980	11134570	11138570	12134570	12138570
4" - 2"	100,0	98,5	101,6	97,4	50,8	1,020	11134571	11138571	12134571	12138571
4" - 2,5"	100,0	100,0	101,6	97,4	63,5	1,050	11134572	11138572	12134572	12138572
4" - 3"	100,0	102,0	101,6	97,4	76,1	1,120	11134573	11138573	12134573	12138573



**DOUBLE TEE BEND**

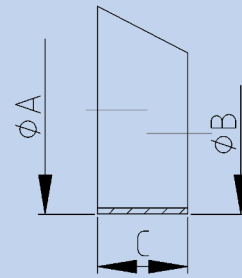
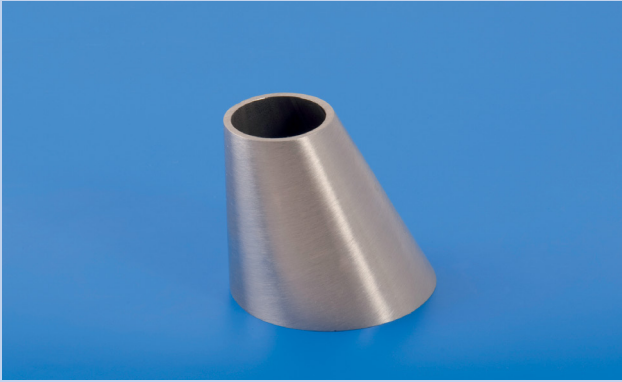
Inch	A	B	C	D	E	Kg	304L matt	316L matt	304L polished	316L polished
1"	26,5	27,5	22,9			0,100	04134479	04138479	04634479	04638479
1,5"	44,0	45,0	35,1			0,180	04134483	04138483	04634483	04638483
2"	66,5	67,5	47,8			0,280	04134485	04138485	04634485	04638485
2,5"	81,5	82,5	60,2			0,530	04134487	04138487	04634487	04638487
3"	94,0	95,0	72,8			0,720	04134489	04138489	04634489	04638489
4"	132,5	133,5	97,4			1,510	04134493	04138493	04634493	04638493



## REDUCER CONCENTRIC

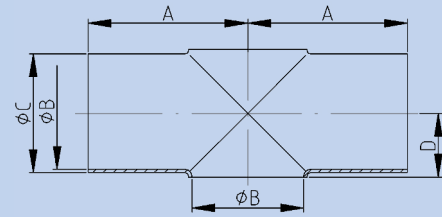
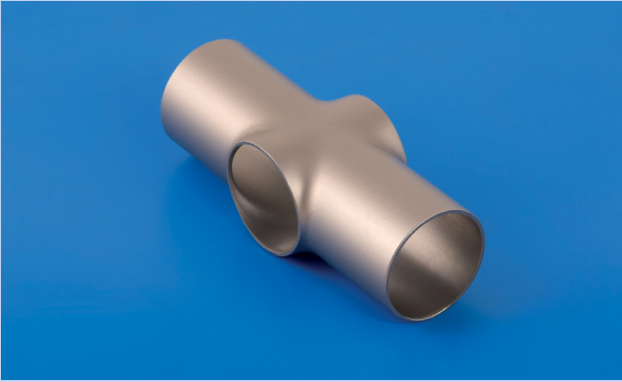
MM	Inch	A	B	C	Kg	304L matt	316L matt	304L polished	316L polished
25,4 x 12,7	1" x 0,5"	25,4	12,7	43,0	0,030	-	11138208BS	-	12138208BS
25,4 x 19,05	1" x 0,75"	25,4	19,05	30,0	0,030	-	11138209BS	-	12138209BS
38 x 25	1,5" x 1"	38	25	22,2	0,034	-	-	-	12138220ISO
38,1 x 25,4	1,5" x 1"	38,1	25,4	21,0	0,034	11134220	11138220	12134220	12138220
38,1 x 25,4	1,5" x 1"	38,1	25,4	48,0	0,034	-	11138220BS	-	12138220BS
50,8 x 25,4	2" x 1"	50,8	25,4	38,0	0,080	11134230	11138230	12134230	12138230
50,8 x 25,4	2" x 1"	50,8	25,4	50,0	0,080	-	11138230BS	-	12138230BS
50,8 x 38,1	2" x 1,5"	50,8	38,1	20,0	0,090	11134232	11138232	12134232	12138232
50,8 x 38,1	2" x 1,5"	50,8	38,1	66,0	0,090	-	11138232BS	-	12138232BS
51 x 25	2" x 1"	51	25	22,6	0,080	-	-	-	12138230ISO
51 x 38	2" x 1,5"	51	38	35,6	0,090	-	-	-	12138232ISO
63,5 x 25,4	2,5" x 1"	63,5	25,4	56,5	0,156	11134240	11138240	12134240	12138240
63,5 x 25,4	2,5" x 1"	63,5	25,4	68,0	0,156	-	-	-	12138240BS
63,5 x 38,1	2,5" x 1,5"	63,5	38,1	39,5	0,110	11134242	11138241	12134242	12138242
63,5 x 38,1	2,5" x 1,5"	63,5	38,1	48,0	0,110	-	11138242BS	-	12138242BS
63,5 x 50,8	2,5" x 2"	63,5	50,8	19,5	0,087	11134243	11138243	12134243	12138243
63,5 x 50,8	2,5" x 2"	63,5	50,8	66,0	0,087	-	11138243BS	-	12138243BS
63,5 x 38	2,5" x 1,5"	63,5	38	35,6	0,110	-	-	-	12138242ISO
63,5 x 51	2,5" x 2"	63,5	51	48,6	0,087	-	-	-	12138243ISO
76,1 x 38,1	3" x 1,5"	76,1	38,1	56,0	0,250	11134251	11138251	12134251	12138251
76,1 x 38,1	3" x 1,5"	76,1	38,1	75,0	0,250	-	-	-	12138251BS
76,1 x 50,8	3" x 2"	76,1	50,8	37,5	0,200	11134252	11138252	12134252	12138252
76,1 x 50,8	3" x 2"	76,1	50,8	70,0	0,200	-	11138252BS	-	12138252BS
76,1 x 63,5	3" x 2,5"	76,1	63,5	19,0	0,100	11134253	11138253	12134253	12138253
76,1 x 63,5	3" x 2,5"	76,1	63,5	72,0	0,100	-	11138253BS	-	12138253BS
76,1 x 51	3" x 2"	76,1	51	47,6	0,200	-	-	-	12138252ISO
76,1 x 63,5	3" x 2,5"	76,1	63,5	60,3	0,100	-	-	-	12138253ISO
101,6 x 50,8	4" x 2"	101,6	50,8	73,0	0,340	11134271	11138271	12134271	12138271
101,6 x 50,8	4" x 2"	101,6	50,8	101,0	0,340	-	-	-	12138271BS
101,6 x 63,5	4" x 2,5"	101,6	63,5	56,0	0,240	11134272	11138272	12134272	12138272
101,6 x 63,5	4" x 2,5"	101,6	63,5	76,0	0,240	-	11138272BS	-	12138272BS
101,6 x 76,1	4" x 3"	101,6	76,1	35,5	0,160	11134273	11138273	12134273	12138273
101,6 x 76,1	4" x 3"	101,6	76,1	50,0	0,160	-	11138273BS	-	12138273BS
101,6 x 76,1	4" x 3"	101,6	76,1	73,0	0,160	-	-	-	12138273ISO





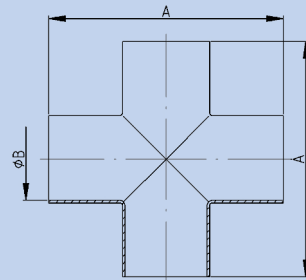
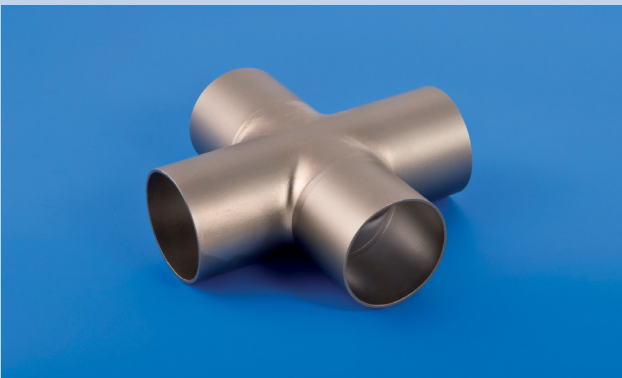
REDUCER ECCENTRIC

MM	Inch	A	B	C	Kg	304L matt	316L matt	304L Polished	316L Polished
38 x 25	1 1/2" x 1"	38	25	44,0	0,03	-	-	-	12138320ISO
38,1 x 25,4	1 1/2" x 1"	38,1	25,4	24,0		11134320	11138320	12134320	12138320
38,1 x 25,4	1 1/2" x 1"	38,1	25,4	33,0	0,03	-	11138320BS	-	12138320BS
51 x 25	2" x 1"	51	25	86,0	0,080	-	-	-	12138330ISO
50,8 x 25,4	2" x 1"	50,8	25,4	47,5		11134330	11138330	12134330	12138330
50,8 x 25,4	2" x 1"	50,8	25,4	66,0	0,08	-	11138330BS	-	12138330BS
50,8 x 38,1	2" x 1 1/2"	50,8	38,1	24,0		11134332	11138332	12134332	12138332
50,8 x 38,1	2" x 1 1/2"	50,8	38,1	33,0	0,05	-	11138332BS	-	12138332BS
51 x 38	2" x 1 1/2"	51	38	42,0	0,050	-	-	-	12138332ISO
63,5 x 25,4	2 1/2" x 1"	63,5	25,4	70,0		11134341	11138341	12134341	12138341
63,5 x 25,4	2 1/2" x 1"	63,5	25,4	73,0	0,15	-	-	-	12138341BS
63,5 x 38	2 1/2" x 1 1/2"	63,5	38	82,0	0,110	-	-	-	12138342ISO
63,5 x 38,1	2 1/2" x 1 1/2"	63,5	38,1	46,5		11134342	11138342	12134342	12138342
63,5 x 38,1	2 1/2" x 1 1/2"	63,5	38,1	68,0	0,11	-	11138342BS	-	12138342BS
63,5 x 51	2 1/2" x 2"	63,5	51	40,0	0,060	-	-	-	12138343ISO
63,5 x 50,8	2 1/2" x 2"	63,5	50,8	23,0		11134343	11138343	12134343	12138343
63,5 x 50,8	2 1/2" x 2"	63,5	50,8	39,0	0,06	-	11138343BS	-	12138343BS
76,1 x 38,1	3" x 1 1/2"	76,1	38,1	68,0		11134351	11138351	12134351	12138351
76,1 x 38,1	3" x 1 1/2"	76,1	38,1	70,0	0,2	-	-	-	12138351BS
76,1 x 50,8	3" x 2"	76,1	50,8	44,5		11134352	11138352	12134352	12138352
76,1 x 50,8	3" x 2"	76,1	50,8	48,0	0,14	-	11138352BS	-	12138352BS
76,1 x 51	3" x 2"	76,1	51	79,0	0,140	-	-	-	12138352ISO
76,1 x 63,5	3" x 2 1/2"	76,1	63,5	22,0		11134353	11138353	12134353	12138353
76,1 x 63,5	3" x 2 1/2"	76,1	63,5	40,0	0,08	-	11138353BS	-	12138353BS
76,1 x 63,5	3" x 2 1/2"	76,1	63,5	39,0	0,080	-	-	-	12138353ISO
101,6 x 50,8	4" x 2"	101,6	50,8	92,0		11134371	11138371	12134371	12138371
101,6 x 50,8	4" x 2"	101,6	50,8	98,0	0,34	-	-	-	12138371BS
101,6 x 63,5	4" x 2 1/2"	101,6	63,5	69,5		11134372	11138372	12134372	12138372
101,6 x 63,5	4" x 2 1/2"	101,6	63,5	70,0	0,27	-	11138372BS	-	12138372BS
101,6 x 76,1	4" x 3"	101,6	76,1	48,0		11134373	11138373	12134373	12138373
101,6 x 76,1	4" x 3"	101,6	76,1	77,0	0,2	-	11138373BS	-	12138373BS
101,6 x 76,1	4" x 3"	101,6	76,1	81,0	0,200	-	-	-	12138373ISO



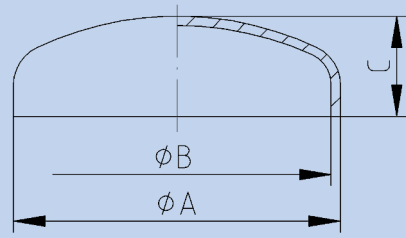
CROSS PIECE SHORT

Inch	A	B	C	D	E	Kg	304L matt	316L matt	304L polished	316L polished
1"	50,0	22,9	25,4	14,0		0,060	04134554	04138554	04634554	04638554
1,5"	60,0	35,1	38,1	20,0		0,140	04134558	04138558	04634558	04638558
2"	70,0	47,8	50,8	27,5		0,230	04134560	04138560	04634560	04638560
2,5"	80,0	60,2	63,5	36,0		0,340	04134562	04138562	04634562	04638562
3"	90,0	72,8	76,1	44,0		0,620	04134564	04138564	04634564	04638564
4"	100,0	97,4	101,6	56,0		0,890	04134568	04138568	04634568	04638568



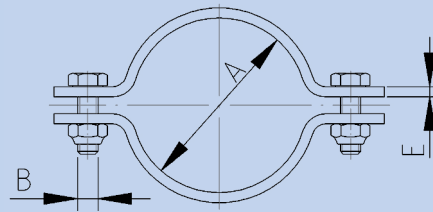
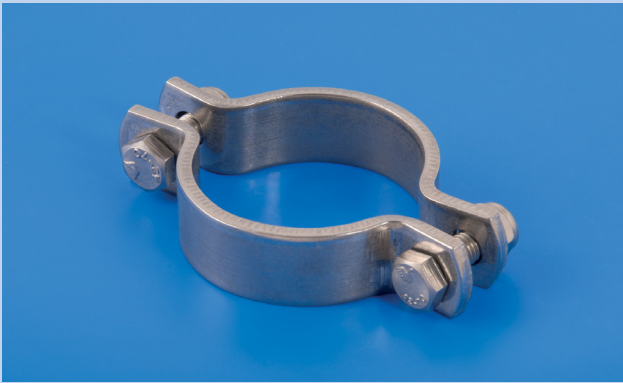
CROSS PIECE

Inch	A	B	C	D	E	Kg	304L matt	316L matt	304L polished	316L polished
1"	100,0	22,9				0,100	04134529	04138529	04634529	04638529
1,5"	120,0	35,1				0,180	04134533	04138533	04634533	04638533
2"	140,0	47,8				0,350	04134535	04138535	04634535	04638535
2,5"	160,0	60,2				0,450	04134537	04138537	04634537	04638537
3"	180,0	72,8				0,570	04134539	04138539	04634539	04638539
4"	200,0	97,4				1,100	04134543	04138543	04634543	04638543



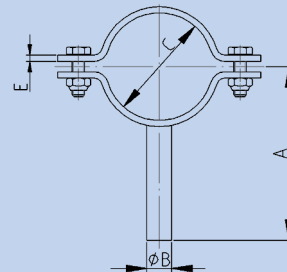
### CONVEX BOTTOM

Inch	A	B	C	D	E	Kg	304L	316L	304L Polished	316L Polished
1"	25,4	22,9	12,0			0,01	04134854	04138854	04634854	04638854
1,5"	38,1	35,1	14,0			0,03	04134858	04138858	04634858	04638858
2"	50,8	47,8	15,0			0,04	04134860	04138860	04634860	04638860
2,5"	63,5	60,5	18,0			0,09	04134862	04138862	04634862	04638862
3"	76,1	72,1	20,0			0,12	04134864	04138864	04634864	04638864
4"	101,6	97,6	28,0			0,20	04134868	04138868	04634868	04638868



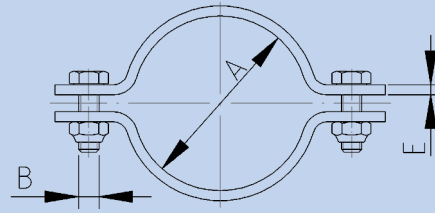
PIPE SUPPORT HEAVY

DN / Inch	A	B	C	D	E	Kg	304	316
25,0 / 25,4 / 1"	24,4	M8			20x4	0,060	90333004	90336004
32 / 1,25"	32,0	M8			20x4	0,075	90333006	90336006
38 / 38,1 / 1,5"	38,0	M8			20x4	0,080	90333008	90336008
50,8 / 51 / 2"	50,8	M8			20x4	0,090	90333010	90336010
63,5 / 2,5"	63,4	M8			20x4	0,110	90333012	90336012
76,1 / 76,2 / 3"	76,0	M8			20x4	0,170	90333014	90336014
101,6 / 4"	102,0	M8			25x4	0,250	90333018	90336018
DN125	129,0	M12			40x6	0,370	90333019	90336019
DN150	154,0	M12			40x6	0,420	90333020	90336020
DN200	204,0	M12			40x6	1,020	90333021	90336021



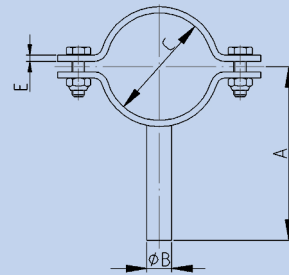
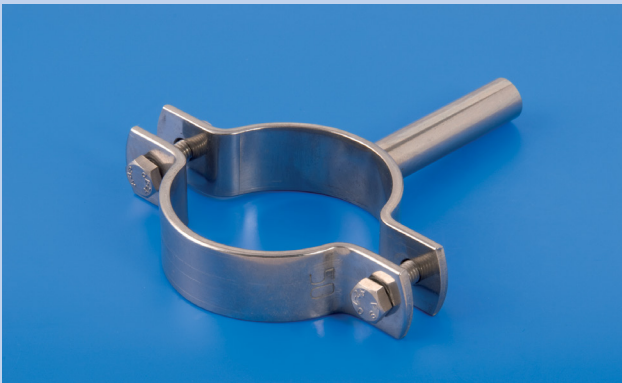
PIPE SUPPORT HEAVY WITH SHAFT

DN / Inch	A	B	C	D	E	Kg	304
25,0 / 25,4 / 1"	65,7	10,0	25,4		20x4	0,095	90333029
32 / 1,25"	68,9	10,0	31,8		20x4	0,100	90333031
38 / 38,1 / 1,5"	72,1	10,0	38,1		20x4	0,110	90333033
50,8 / 51 / 2"	78,4	10,0	50,8		20x4	0,125	90333035
63,5 / 2,5"	85,3	12,0	63,5		20x4	0,150	90333037
76,1 / 76,2 / 3"	91,6	12,0	76,1		25x4	0,270	90333039
101,6 / 4"	104,3	12,0	101,6		25x4	0,300	90333043
DN125	118,5	16,0	129,0		40x6	0,760	90333044
DN150	131,0	16,0	154,0		40x6	1,520	90333045



PIPE SUPPORT LIGHT

DN / Inch	A	B	C	D	E	Kg	SKS nr.
25,0 / 25,4 / 1"	25,4	M6			20x3	0,050	90333004MS
32 / 1,25"	31,8	M6			20x3	0,065	90333006MS
38 / 38,1 / 1,5"	38,1	M6			20x3	0,070	90333008MS
50,8 / 51 / 2"	50,8	M6			20x3	0,080	90333010MS
63,5 / 2,5"	63,5	M6			20x3	0,090	90333012MS
76,1 / 76,2 / 3"	76,1	M6			25x3	0,150	90333014MS
101,6 / 4"	101,6	M6			25x3	0,225	90333018MS
DN125	129,0	M8			30x3	0,370	90333019MS
DN150	154,0	M8			30x3	0,420	90333020MS
DN200	204,0	M10			40x4	1,020	90333021MS



PIPE SUPPORT ON SHAFT (LIGHT)

DN / Inch	A	B	C	D	E	Kg	SKS nr.
25,0 / 25,4 / 1"	70,5	10,0	25,4		20x3	0,095	90333029MS
32 / 1,25"	73,5	10,0	31,8		20x3	0,100	90333031MS
38 / 38,1 / 1,5"	76,5	10,0	38,1		20x3	0,110	90333033MS
50,8 / 51 / 2"	83,0	12,0	50,8		20x3	0,125	90333035MS
63,5 / 2,5"	89,5	12,0	63,5		20x3	0,150	90333037MS
76,1 / 76,2 / 3"	96,0	12,0	76,1		25x3	0,270	90333039MS
101,6 / 4"	108,5	12,0	101,6		25x3	0,300	90333043MS
DN125	140,5	16,0	129,0		30x3	0,510	90333044MS
DN150	179,5	16,0	154,0		30x3	1,035	90333045MS
DN200	226,0	20,0	204,0		40x4	1,320	90333046MS

## SMS screw coupling (SMS 1145)

This original Scandinavian coupling is the face of the norm range. The tube dimensions are also called "SMS dimensions". The coupling is described in the SMS 1145 and is often applied because it is flatly removable. The liners do not have to be taken out of the male thread for dismounting. This coupling exists in different versions. For example there is a French version and a Swedish version, both have got the same sealing principle, but they do not fit together. A SMS coupling has very short welding ends.

### Dimension range and material

According ISO 2037 (sizes) and EN 10088-1 (materials)

### Ra internal value

< 1µm

### Parts

Thread male SMS 1146

Liner SMS 1147

Nut SMS 1148

Seal SMS 1149

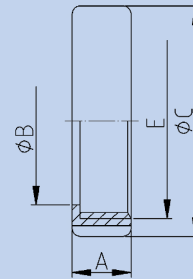
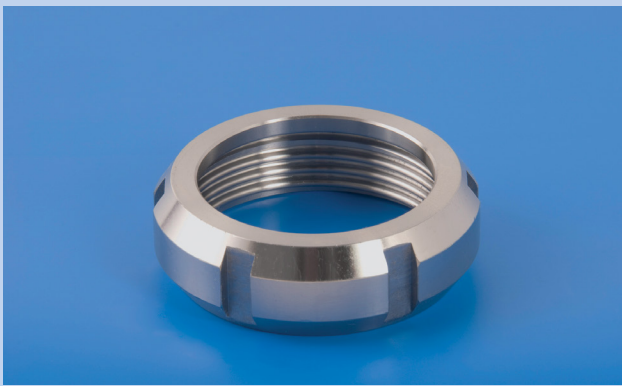


### Connection

Weld or expanding. Other connections do not have a norm: Blind, hose connector, screw.

### Seals

EPDM, FKM (Viton), NBR, MVQ (silicone)Inch A

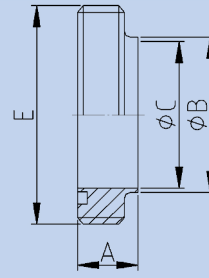
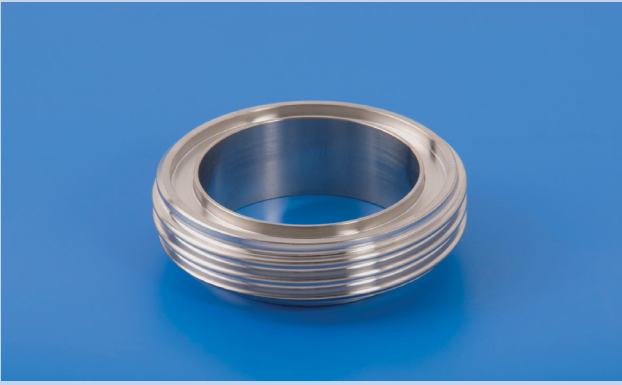


### NUT SMS

Inch	A	B	C	D	E	Kg	304
1"	20,0	32,0	51,0	32,0	Rd40x1/6"	0,050	15134004
1,5"	25,0	48,0	74,0	48,0	Rd60x1/6"	0,170	15134008
2"	26,0	60,5	84,0	60,5	Rd70x1/6"	0,310	15134010
2,5"	30,0	74,0	100,0	74,0	Rd85x1/6"	0,330	15134012
3"	32,0	87,0	114,0	87,0	Rd98x1/6"	0,591	15134014
4"	45,0	117,0	154,0	117,0	Rd132x1/6"	0,540	15134018

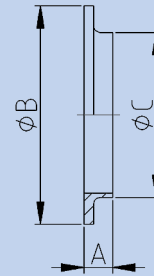
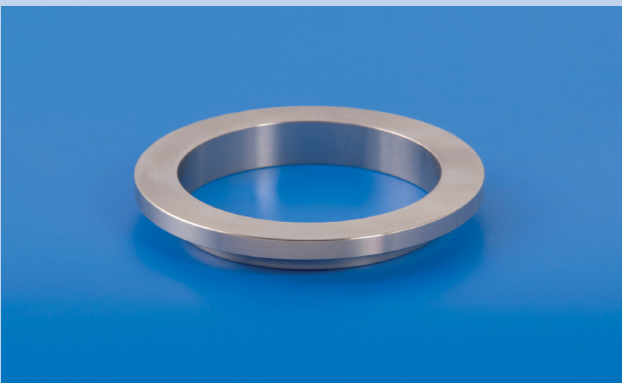


## CROSS-SECTION GASKET AREA SMS COUPLING



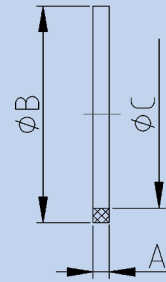
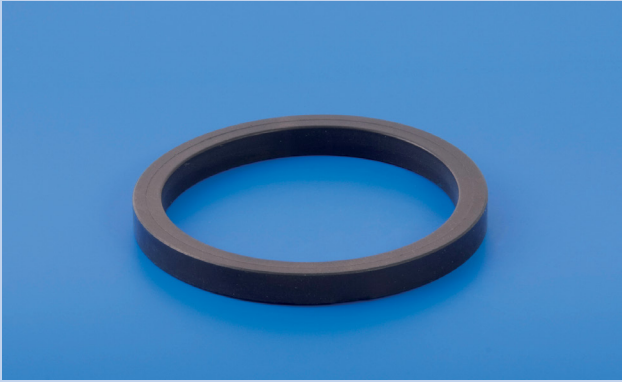
WELDING MALE PART SMS

Inch	A	B	C	D	E	Kg	304L	316L
1"	15,0	25,0	22,5		Rd40x1/6"	0,030	15234004	15238004
1,5"	20,0	38,0	35,5		Rd60x1/6"	0,110	15234008	15238008
2"	20,0	51,0	48,5		Rd70x1/6"	0,240	15234010	15238010
2,5"	24,0	63,5	60,5		Rd85x1/6"	0,330	15234012	15238012
3"	24,0	76,0	72,0		Rd98x1/6"	0,960	15234014	15238014
4"	35,0	101,6	97,6		Rd132x1/6"	1,322	15234018	15238018



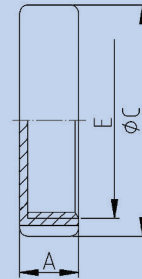
WELDING LINER SMS

Inch	A	B	C	S	E	Kg	304L	316L
1"	8,0	35,5	25,0	3,5		0,010	15234029	15238029
1,5"	9,0	55,0	38,0	4,0		0,030	15234033	15238033
2"	9,0	65,0	51,0	4,0		0,060	15234035	15238035
2,5"	9,0	80,0	63,5	4,0		0,110	15234037	15238037
3"	10,0	93,0	76,0	5,0		0,130	15234039	15238039
4"	12,0	127,0	101,6	6,0		0,300	15234043	15238043



**GASKET SMS**

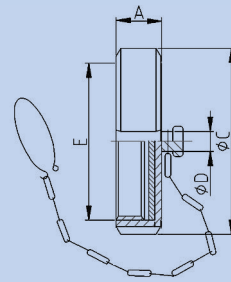
Inch	A	B	C	D	E	Kg	NBR	EPDM	FPM (Viton)	PTFE (Teflon)
1"	5,5	25,0	32,0			0,002	15400604	15400579	15400554	15400504
1,5"	5,5	38,0	48,0			0,003	15400608	15400583	15400558	15400508
2"	5,5	51,0	61,0			0,006	15400610	15400585	15400560	15400510
2,5"	5,5	63,5	73,5			0,007	15400612	15400587	15400562	15400512
3"	5,5	76,0	86,0			0,010	15400614	15400589	15400564	15400514
4"	5,5	101,6	113,5			0,020	15400618	15400593	15400568	15400518



**BLIND NUT SMS**

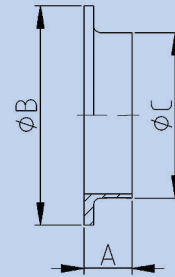
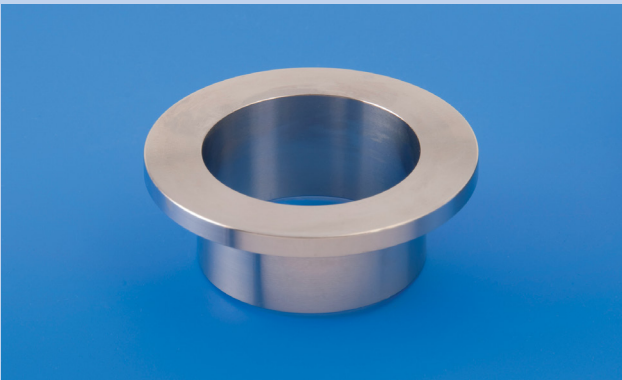
Inch	A	B	C	D	E	Kg	304
1"	20,0		51,0		Rd40x1/6"	0,050	15134230
1,5"	25,0		74,0		Rd60x1/6"	0,180	15134233
2"	26,0		84,0		Rd70x1/6"	0,320	15134236
2,5"	30,0		100,0		Rd85x1/6"	0,340	15134238
3"	32,0		114,0		Rd98x1/6"	0,600	15134239
4"	45,0		154,0		Rd132x1/6"	0,550	15134240





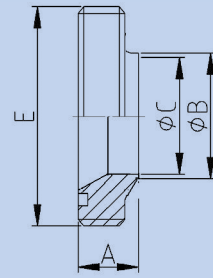
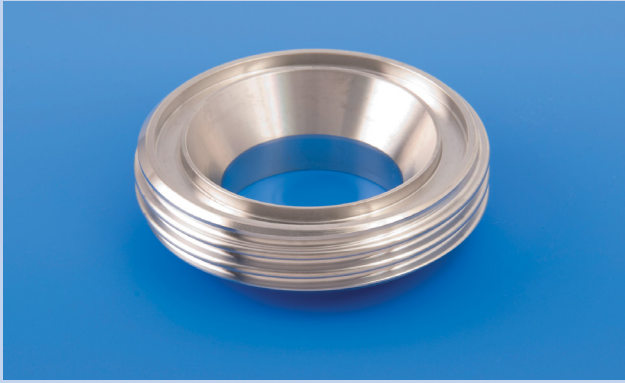
**BLIND NUT COMPLETE SMS**

Inch	A	B	C	D	E	Kg	304
1"	20,0		51,0	6,5	Rd40x1/6"	0,050	15134250
1,5"	25,0		74,0	6,5	Rd60x1/6"	0,180	15134253
2"	26,0		84,0	6,5	Rd70x1/6"	0,320	15134256
2,5"	31,0		100,0	6,5	Rd85x1/6"	0,340	15134258
3"	32,0		114,0	6,5	Rd98x1/6"	0,600	15134259
4"	45,0		154,0	6,5	Rd132x1/6"	0,550	15134260



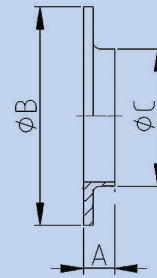
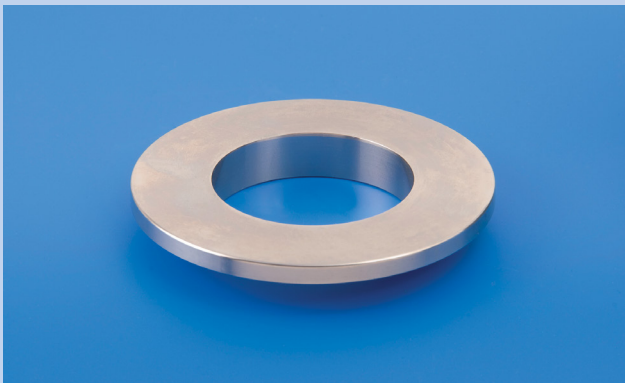
**WELDING LINER LONG SMS**

Inch	A	B	C			Kg	304L	316L
1"	15,5	35,5	25,0			0,010	-	15238129
1,5"	16,0	55,0	38,0			0,030	-	15238133
2"	17,0	65,0	51,0			0,060	-	15238135
2,5"	17,0	80,0	63,5			0,110	-	15238137
3"	19,0	93,0	76,0			0,130	-	15238139
4"	12,0	127,0	101,6			0,300	-	15238143



**REDUCING MALE PART SMS**

Inch	A	B	C	D	E	Kg	304L	316L
1,5" x 1"	20,0	25,0	22,6		Rd60x1/6"	0,120	-	15238201
2" x 1"	20,0	25,0	22,6		Rd70x1/6"	0,250	-	15238202
2" x 1,5"	20,0	38,0	35,6		Rd70x1/6"	0,240	-	15238203
2,5" x 1,5"	24,0	38,0	35,6		Rd85x1/6"	0,360	-	15238205
2,5" x 2"	24,0	51,0	48,6		Rd85x1/6"	0,340	-	15238206
3" x 2"	24,0	51,0	48,6		Rd98x1/6"	0,100	-	15238209
3" x 2,5"	24,0	63,5	60,5		Rd98x1/6"	0,099	-	15238210



**REDUCING LINER SMS**

Inch	A	B	C	S	E	Kg	304L	316L
1,5" x 1"	9,0	55,0	25,0	3,5		0,030	-	15238221
2" x 1"	9,0	65,0	25,0	4,0		0,030	-	15238222
2" x 1,5"	9,0	65,0	38,0	4,0		0,040	-	15238223
2,5" x 1,5"	9,0	80,0	38,0	4,0		0,040	-	15238225
2,5" x 2"	9,0	80,0	51,0	4,0		0,070	-	15238226
3" x 2"	10,0	93,0	51,0	5,0		0,070	-	15238229
3" x 2,5"	10,0	93,0	63,5	3,0		0,130	-	15238230
4" x 2,5"	15,0	127,0	63,5	6,0		0,130	-	15238234
4" x 3"	15,0	127,0	76,1	6,0		0,300	-	15238235

## BS 4825-4 + ISO-2853 IDF

The coupling is described in the BS-4825 and ISO 2853 norm and is also called the IDF or ISS coupling. This is the only screw coupling with a trapezium shaped thread. There is another specification which describes the IDF coupling: the ISO 2853. There are some small differences between these norms, so they cannot always be used together.

### Dimensions range and material

According BS 4825-1 (sizes) and EN 10088-1 (material)

### Connection

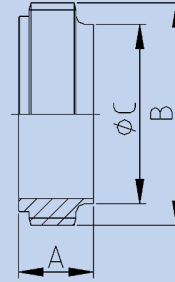
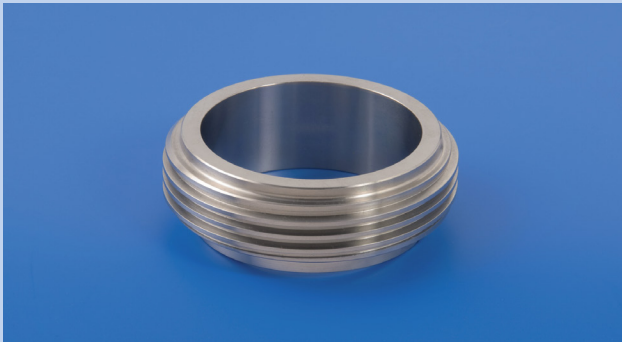
Weld or expanding. Other connections aren't according a norm:

Blind, hose connector, screw

### Seal

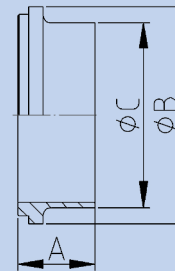
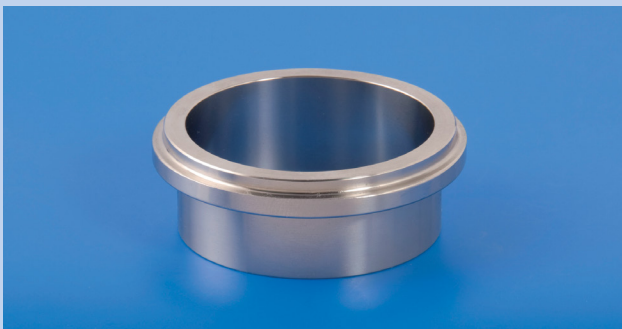
EPDM, FKM (Viton), NBR, MVQ (silicone)

The so-called Combifit seal makes this coupling more hygienic.



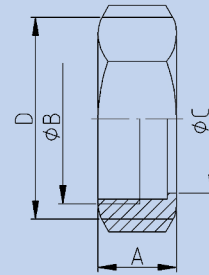
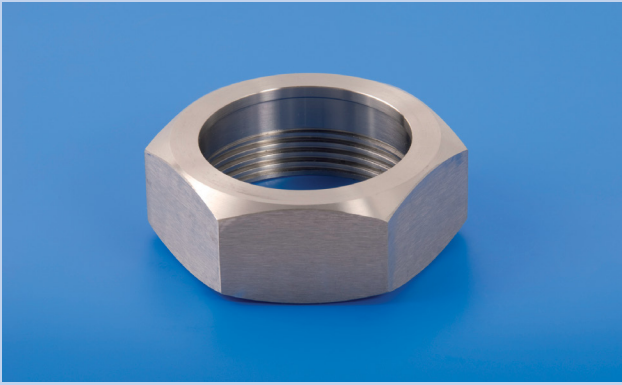
MALE PART IDF BS-4825-4 / ISO-2853

Inch	A	B	C	D	Kg	316L	316L
1"	21,5	Tr37,1x1/8"	25,6		0,060	17238004BS	17238004ISO
1,5"	21,5	Tr50,6x1/8"	38,6		0,100	17238008BS	17238008ISO
2"	21,5	Tr64,1x1/8"	51,6		0,140	17238010BS	17238010ISO
2,5"	21,5	Tr77,6x1/8"	64,1		0,210	17238012BS	17238012ISO
3"	21,5	Tr91,1x1/8"	76,7		0,270	17238014BS	17238014ISO
4"	30,0	Tr125,9x1/6"	102,1		0,380	17238018BS	17238018ISO



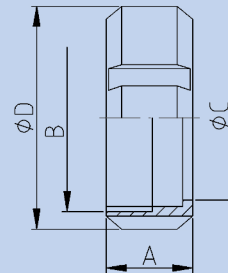
LINER IDF BS-4825-4 / ISO-2853

Inch	A	B	C	D	E	Kg	316L
1"	12,0	33,8	25,6			0,030	17238029ISO
1"	21,5	33,8	25,6			0,030	17238029BS
1,5"	12,0	47,0	38,6			0,050	17238033ISO
1,5"	21,5	47,0	38,6			0,050	17238033BS
2"	12,0	60,5	51,6			0,070	17238035ISO
2"	21,5	60,5	51,6			0,070	17238035BS
2,5"	12,0	74,0	64,1			0,110	17238037ISO
2,5"	21,5	74,0	64,1			0,110	17238037BS
3"	12,0	87,5	76,7			0,150	17238039ISO
3"	21,5	87,5	76,7			0,150	17238039BS
4"	21,5	120,7	102,5			0,210	17238043ISO
4"	30,0	120,7	102,5			0,210	17238043BS



NUT HEX. IDF BS 4825

Inch	A	B	C	D	E	Kg	304L
1"	30,0	Tr38,3x1/8"	30,5	SW46		0,410	17134029BS
1,5"	30,0	Tr51,8x1/8"	43,5	SW61		0,410	17134033BS
2"	30,0	Tr65,3x1/8"	57,0	SW76		0,410	17134035BS
2,5"	30,0	Tr78,8x1/8"	70,7	SW91		0,410	17134037BS
3"	30,0	Tr92,3x1/8"	83,3	SW106,5		0,410	17134039BS
4"	35,0	Tr126,8x1/6"	112,0	SW133,4		0,480	17134043BS

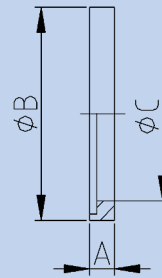


ROUND NUT IDF BS 4825

Inch	A	B	C	D	E	Kg	304L
1"	30,0	Tr38,3x1/8"	30,5	48,0		0,150	17134054
1,5"	30,0	Tr51,8x1/8"	43,5	64,0		0,240	17134058
2"	30,0	Tr65,3x1/8"	57,0	77,0		0,300	17134060
2,5"	30,0	Tr78,8x1/8"	70,7	91,0		0,380	17134062
3"	30,0	Tr92,3x1/8"	83,3	106,0		0,510	17134064
4"	30,0	Tr119,4x1/8"	110,0	135,0		0,730	17134068

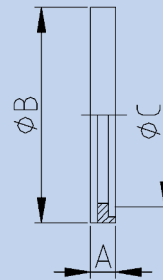


**CROSS-SECTION GASKET AREA  
IDF COUPLING**



GASKET L-PROFILE IDF BS 4825-4 / ISO 2853

Inch	A	B	C	D	E	Kg	NBR	EPDM	FPM (Viton)	NBR met RVS ring	RVS Verstevigingsring
1"	6,0	32,5	23,6			0,002	17400604	17400579	17400554	17400710	17434004
1,5"	6,0	46,0	36,6			0,003	17400608	17400583	17400558	17400712	17434008
2"	6,0	59,5	49,6			0,006	17400610	17400585	17400560	17400713	17434010
2,5"	6,0	73,2	61,3			0,007	17400612	17400587	17400562	17400714	17434012
3"	6,0	86,5	73,9			0,009	17400614	17400589	17400564	17400615	17434014
4"	6,0	112,5	98,6			0,018	17400618	17400593	17400568	-	-



GASKET T-PROFILE IDF BS4825-4 / ISO 2853

Inch	A	B	C	D	E	Kg	NBR	FPM (Viton)
1"	7,0	32,5	25,5			0,002	17500604	17500554
1,5"	7,0	46,0	38,0			0,003	17500608	17500558
2"	7,0	59,5	51,0			0,006	17500610	17500560
2,5"	7,0	73,0	63,0			0,007	17500612	17500562
3"	7,0	86,5	75,5			0,009	17500614	17500564
4"	9,5	119,0	110,0			0,018	17500618	17500568

## BS 4825-5 RJT Coupling

This coupling is described in the norm BS 4825-5 and is still used in the less hygienic applications. The coupling has an O-ring gasket in a deep groove. Therefore the coupling has a huge gap between liner and male part. This space is not well cleanable in a CIP system but serves as a fine coupling in cases where the cleaning takes place in dismantled situations.

### Parts

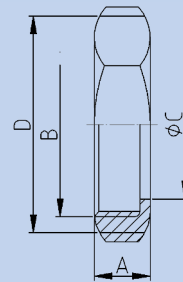
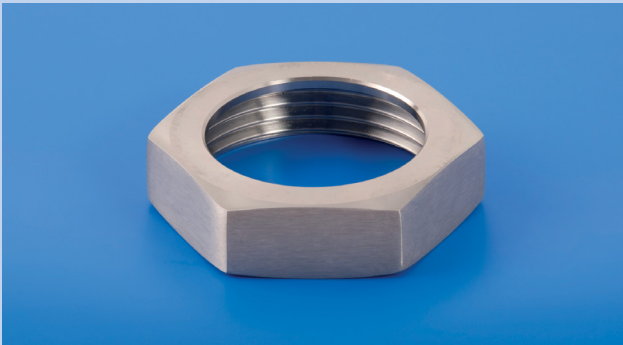
Male part, Liner, nut (round and hexagonal) and gasket (O-ring)

### Connections

Weld or expanding. Other connections are not normalized: Blind, Hose liner, inside or outside thread.

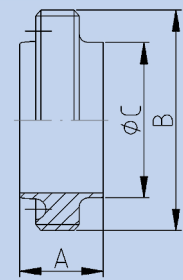
### Gasket material

EPDM, FKM (Viton), NBR or MVQ (Silicone)



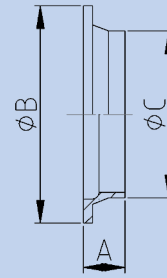
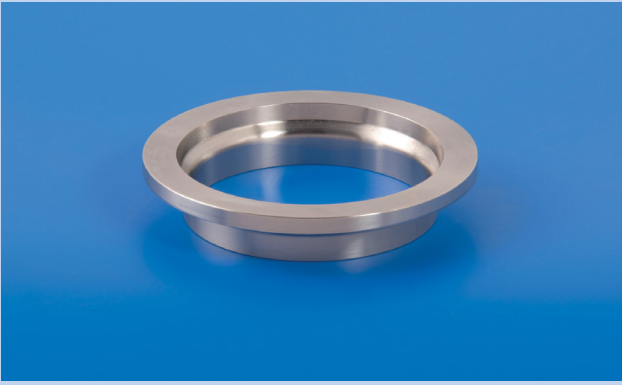
NUT RJT BS4825-5

Inch	A	B	C	D	E	Kg	304L
1"	22,0	W46,6x1/8"	33,3	SW51		0,150	17834104
1,5"	22,0	W59,3x1/8"	46,0	SW65		0,200	17834108
2"	22,0	W73,6x1/6"	58,7	SW79		0,280	17834110
2,5"	22,0	W86,3x1/6"	71,4	SW92		0,340	17834112
3"	22,0	W99,0x1/6"	84,1	Sw105		0,410	17834114
4"	22,0	W124.4x1/6"	109,5	SW130		0,560	17834117



MALE PART RJT BS4825-5

Inch	A	B	C	D	SW	Kg	316L
1"	26,3	W45,5x1/8"	25,6		SWG16	0,130	17838004
1,5"	26,3	W58,2x1/8"	38,8		SWG16	0,150	17838008
2"	26,3	W72,5x1/6"	51,0		SWG16	0,210	17838010
2,5"	26,3	W85,2x1/6"	63,7		SWG16	0,260	17838012
3"	26,3	W97,9x1/6"	76,4		SWG16	0,330	17838014
4"	26,3	W123.3x1/6"	101,8		SWG14	0,440	17838018



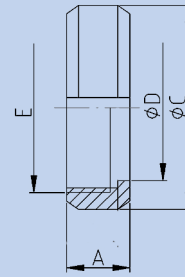
LINER RJT BS4825-5

Inch	A	B	C	D	SW	Kg	316L
1"	12,7	41,3	25,6		SWG16	0,040	17838029
1,5"	12,7	54,0	38,3		SWG16	0,040	17838033
2"	12,7	66,7	51,0		SWG16	0,060	17838035
2,5"	12,7	75,4	63,7		SWG16	0,080	17838037
3"	12,7	92,1	76,4		SWG16	0,080	17838039
4"	25,4	117,5	101,8		SWG14	0,160	17838043



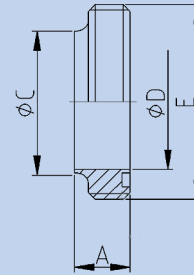
GASKET RJT BS4825-5

Inch	A	B	C	D	E	Kg	NBR (Perbunan)	EPDM	FPM (Viton)
1"	6,6		26,7			0,004	17800006	17800579	17800108
1,5"	6,6		39,4			0,006	17800008	17800583	17800109
2"	6,6		52,1			0,008	17800010	17800585	17800110
2,5"	6,6		64,8			0,010	17800012	17800587	17800112
3"	6,6		77,5			0,012	17800014	17800589	17800114
4"	6,6		102,9			0,014	17800018	17800591	



NUT DS

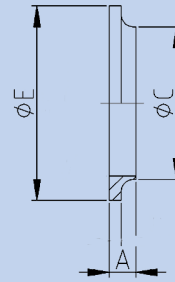
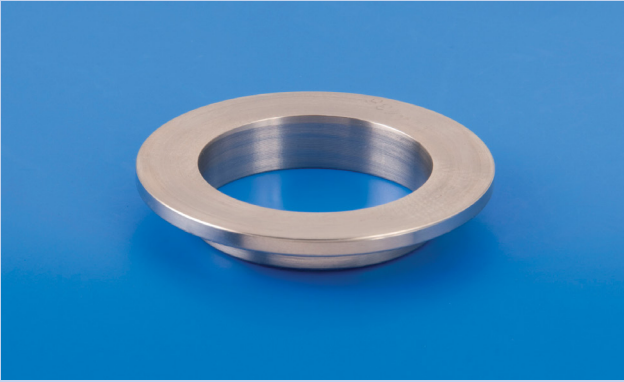
Inch	A	B	C	D	E	Kg	304
1"	20,0		57,0	35,0	Rd44x1/6"	0,160	19334004
1,5"	20,0		71,0	48,5	Rd58x1/6"	0,220	19334009
2"	22,0		86,0	62,5	Rd72x1/6"	0,310	19334010
2,5"	24,0		103,0	76,5	Rd88x1/6"	0,450	19334012
3"	25,0		115,0	88,5	Rd100x1/6"	0,540	19334014
4"	28,0		150,0	117,0	Rd130x1/6"	1,000	19334016



WELDING MALE PART DS

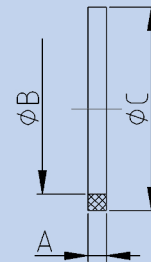
Inch	A	B	C	D	E	Kg	304L	316L
1"	18,5		22,5	25,4	Rd44x1/6"	0,090	-	19438004
1,5"	20,0		35,5	38,4	Rd58x1/6"	0,140	-	19438008
2"	20,0		48,5	51,4	Rd72x1/6"	0,220	-	19438010
2,5"	24,0		60,5	63,9	Rd88x1/6"	0,340	-	19438012
3"	24,0		72,0	76,4	Rd100x1/6"	0,430	-	19438014
4"	24,0		97,6	102,0	Rd130x1/6"	0,720	-	19438018





**WELDING LINER DS**

Inch	A	B	C	D	E	Kg	304L	316L
1"	11,0		25,4		40,0	0,020	-	19438029
1,5"	11,0		38,4		54,0	0,040	-	19438033
2"	11,0		51,4		68,0	0,050	-	19438035
2,5"	12,0		63,9		84,0	0,100	-	19438037
3"	12,0		76,4		96,0	0,120	-	19438039
4"	12,0		102,0		124,0	0,260	-	19438043



**GASKET DS**

Inch	A	B	C	D	E	Kg	NBR
1"	4,5	25,0	32,0			0,002	19400704
1,5"	4,5	38,0	47,0			0,003	19400708
2"	4,5	51,0	59,0			0,004	19400710
2,5"	4,5	63,5	74,5			0,007	19400712
3"	4,5	76,0	88,0			0,009	19400714
4"	4,5	101,6	112,5			0,014	19400718

## DIN 11851 Coupling

The so-called 'dairy coupling' according DIN 11851 is the most applied screw coupling within the food industry. The round thread and the huge tolerances ensure that the coupling always closes. If necessary with an increased seal. Although it is a little old fashioned, it shows the usability and the popularity. The coupling is officially standardized with DN dimensions, but there are also types available with inches and ISO dimensions. A lot of equipment or instruments are provided with a coupling according DIN 11851.

### Size ranges and material

According DIN 11851, with exception of the welding connections. This is based on the inch dimensions. According the norm you need the use forged materials, however there are a lot of cast materials available.

### Tolerances and specifications

DIN 405-1 and 2, DIN 11887, DIN ISO 2768-1, ISO 48, FDA and BGA

### Type and codes

Liner D, male thread C, nut F and seal G ; internal Ra value < 1,6µm  
 Connection : weld (S), short (SK), expanding male part (W)  
 Other connections don't have a norm : Blind, hose connector, screw

### Seals

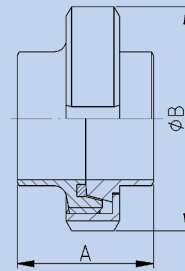
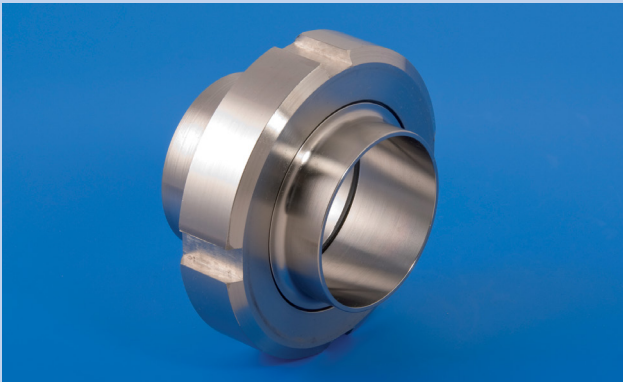
EPDM, FKM (Viton), HNBR, MVQ (silicone), NBR or PTFE (Teflon)

### Pressure application (to 140°C)

DN10 – DN40 max. 40 bars  
 DN50 – DN100 max. 25 bars  
 DN125 – DN150 max. 16 bars  
 DN200 max. 10 bars

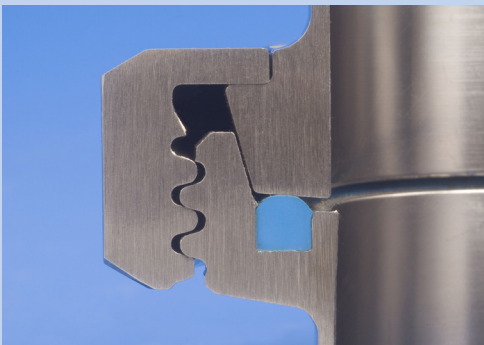
### Peculiarities

EHEGD marked if provided with a S.K.S. seal in combination with the S.K.S. liner and seal.

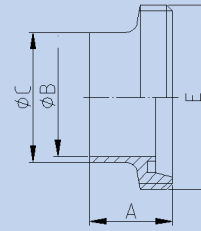
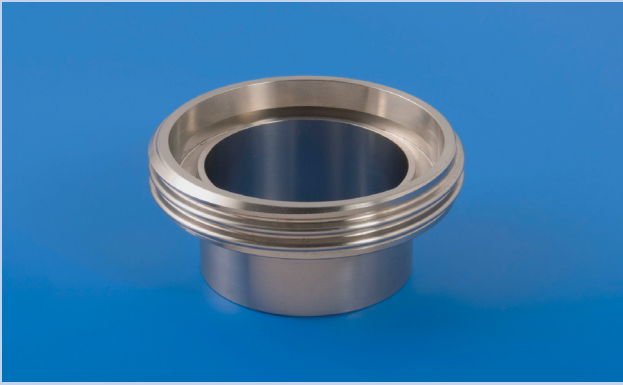


### UNION COMPLETE DIN 11851

Inch	A	B	C	D	E	Kg	304L NBR	316L NBR
1"	45,0	63,0				0,433	14734004	14738004
1,25"	51,0	70,0				0,534	14734006	14738006
1,5"	53,0	78,0				0,654	14734008	14738008
2"	57,0	92,0				0,899	14734010	14738010
2,5"	65,0	112,0				1,462	14734012	14738012
3"	65,1	119,0				1,488	14734014	14738014
4"	89,0	148,0				2,777	14734018	14738018



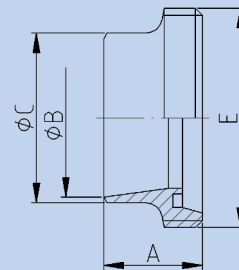
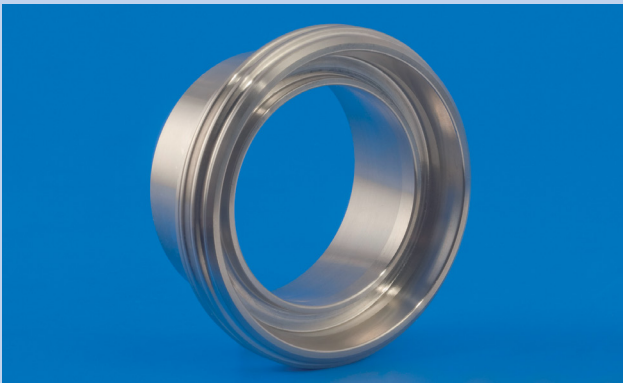
### CROSS-SECTION GASKET AREA DIN 11851 COUPLING



MALE PART DIN 11851



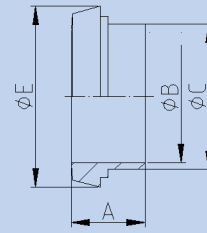
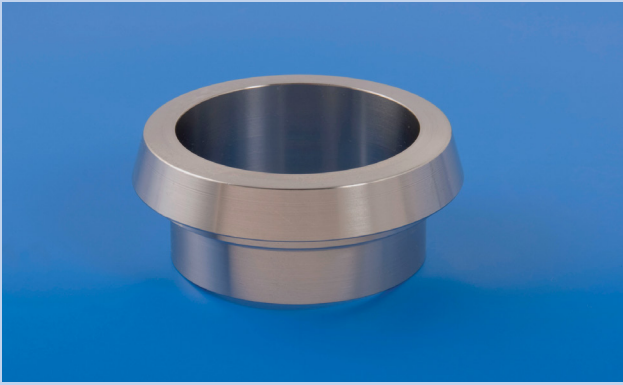
Inch	A	B	C	D	E	Kg	304L	316L
1"	29,0	22,9	25,4		Rd52x1/6"	0,100	14234004	14238004
1,25"	32,0	29,3	31,8		Rd58x1/6"	0,110	14234006	14238006
1,5"	33,0	35,1	38,1		Rd65x1/6"	0,160	14234008	14238008
2"	35,0	47,8	50,8		Rd78x1/6"	0,220	14234010	14238010
2,5"	40,0	60,2	63,5		Rd95x1/6"	0,360	14234012	14238012
3"	40,0	72,8	76,1		Rd104x1/6"	0,420	14234014	14238014
4"	54,0	97,4	101,6		Rd130x1/4"	0,640	14234018	14238018



MALE PART DIN 11851 / ISO

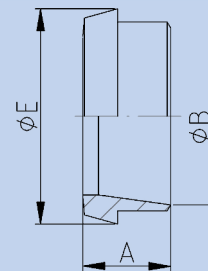
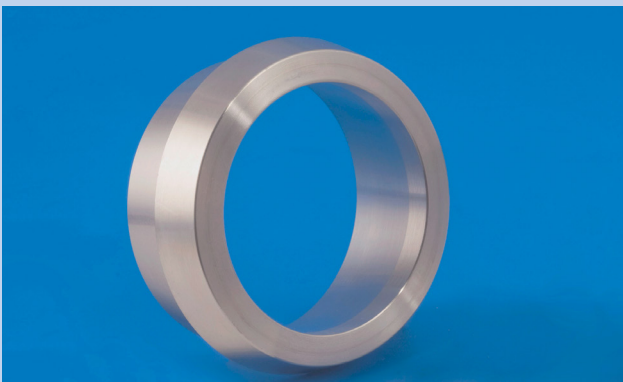


DN / ISO	A	B	C	D	E	Kg	304L	316L
10 / 17,2	21,0	14,2	17,2		Rd28x1/8"	0,030	14234201	14238201
15 / 21,3	21,0	18,1	21,3		Rd34x1/8"	0,040	14234202	14238202
20 / 26,9	24,0	23,7	26,9		Rd44x1/6"	0,080	14234203	14238203
25 / 33,7	29,0	29,7	33,7		Rd52x1/6"	0,110	14234205	14238205
32 / 42,4	32,0	38,4	42,4		Rd58x1/6"	0,140	14234207	14238207
40 / 48,3	33,0	44,3	48,3		Rd65x1/6"	0,190	14234209	14238209
50 / 60,3	35,0	56,3	60,3		Rd78x1/6"	0,250	14234211	14238211
65 / 76,1	40,0	71,5	76,1		Rd95x1/6"	0,370	14234213	14238213
80 / 88,9	45,0	84,3	88,9		Rd110x1/4"	0,560	14234215	14238215
100 / 114,3	54,0	109,1	114,3		Rd130x1/4"	0,810	14234217	14238217
125 / 139,7	46,0	134,5	139,7		Rd160x1/4"	1,130	14234219	14238219
150 / 168,3	50,0	163,1	168,3		Rd190x1/4"	1,770	14234220	14238220



LINER DIN 11851

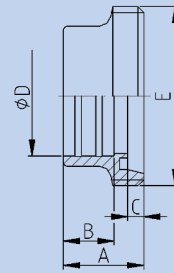
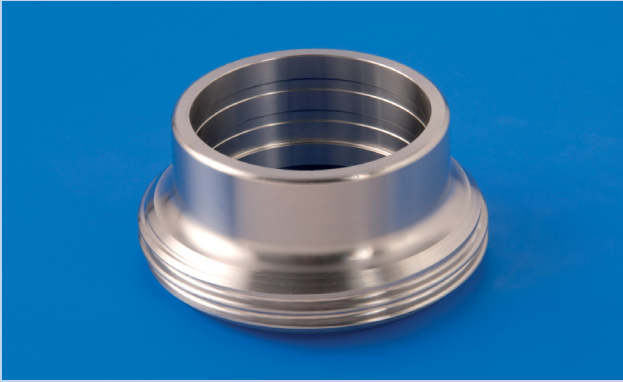
Inch	A	B	C	D	E	Kg	304L	316L
1"	22,0	22,9	25,4	44,0	44,0	0,080	14234029	14238029
1,25"	25,0	29,3	31,8	50,0	50,0	0,110	14234031	14238031
1,5"	26,0	35,1	38,1	56,0	56,0	0,130	14234033	14238033
2"	28,0	47,8	50,8	68,5	68,5	0,180	14234035	14238035
2,5"	32,0	60,2	63,5	86,0	86,0	0,330	14234037	14238037
3"	32,0	72,8	76,1	93,0	93,0	0,310	14234039	14238039
4"	44,0	97,4	101,6	121,0	121,0	0,670	14234043	14238043



LINER PART DIN 11851 / ISO

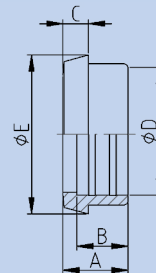
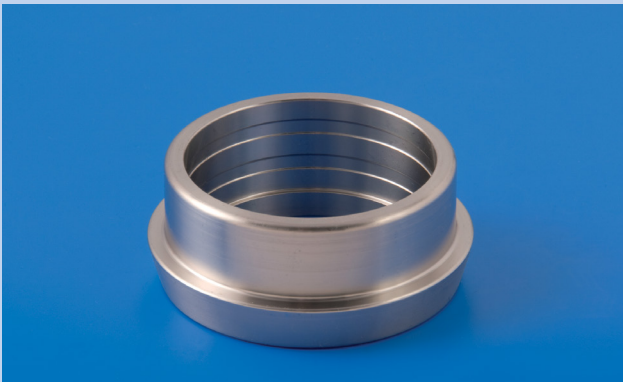
DN / ISO	A	B	C	D	E	Kg	304L	316L
10 / 17,2	17,0	14,2			22,0	0,010	14234226	14238226
15 / 21,3	17,0	18,1			28,0	0,020	14234227	14238227
20 / 26,9	18,0	23,7			36,0	0,040	14234228	14238228
25 / 33,7	22,0	29,7			44,0	0,070	14234230	14238230
32 / 42,4*	25,0	38,4			50,0	0,110	14234232	14238232
40 / 48,3	26,0	44,3			56,0	0,130	14234234	14238234
50 / 60,3	28,0	56,3			68,5	0,190	14234236	14238236
65 / 76,1	32,0	71,5			86,0	0,290	14234238	14238238
80 / 88,9	37,0	84,3			100,0	0,360	14234240	14238240
100 / 114,3	44,0	109,1			121,0	0,670	14234242	14238242
125 / 139,7	34,0	134,5			150,0	0,760	14234243	14238243
150 / 168,3	37,0	163,1			176,0	1,030	14234244	14238244

\* = DN32 requires a special nut



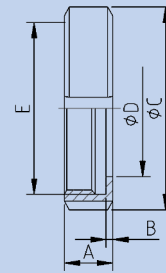
EXPANDING MALE PART DIN 11851

Inch	A	B	C	D	E	Kg	304L	316L
1"	29,0	15,0	7,0	25,6	Rd52x1/6"	0,150	14334004	14338004
1,25"	32,0	18,0	7,0	32,0	Rd58x1/6"	0,170	14334006	14338006
1,5"	33,0	20,0	7,0	38,3	Rd65x1/6"	0,220	14334008	14338008
2"	35,0	22,0	7,0	51,0	Rd78x1/6"	0,310	14334010	14338010
2,5"	40,0	25,0	8,0	63,8	Rd95x1/6"	0,470	14334012	14338012
3"	40,0	25,0	8,0	76,4	Rd104x1/6"	0,540	14334014	14338014
4"	54,0	35,0	10,0	101,9	Rd130x1/4"	1,000	14334018	14338018



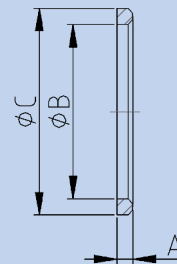
EXPANDING LINER DIN 11851

	A	B	C	D	E	Kg	304L	316L
1"	22,0	15,0	10,0	25,6	44,0	0,100	14334029	14338029
1,25"	25,0	18,0	10,0	32,0	50,0	0,130	14334031	14338031
1,5"	26,0	20,0	10,0	38,3	56,0	0,160	14334033	14338033
2"	28,0	22,0	11,0	51,0	68,5	0,220	14334035	14338035
2,5"	32,0	25,0	12,0	63,8	86,0	0,430	14334037	14338037
3"	32,0	25,0	12,0	76,4	93,0	0,350	14334039	14338039
4"	44,0	35,0	15,0	101,9	121,0	0,800	14334043	14338043



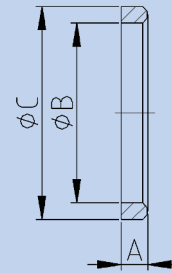
NUT DIN 11851

DN / Inch	A	B	C	D	E	Kg	304L	316L
25 / 1"	21,0	3,0	63,0	36,0	Rd52x1/6"	0,160	14134005	14138005
32 / 1,25"	21,0	3,0	70,0	42,0	Rd58x1/6"	0,190	14134007	14138007
40 / 1,5"	21,0	3,0	78,0	49,0	Rd65x1/6"	0,240	14134009	14138009
50 / 2"	22,0	3,0	92,0	62,0	Rd78x1/6"	0,320	14134011	14138011
65 / 2,5"	25,0	4,0	112,0	80,0	Rd95x1/6"	0,530	14134013	14138013
75 / 3"	25,0	4,0	119,0	88,0	Rd104x1/6"	0,500	14134014	14138014
100 / 4"	31,0	5,0	148,0	115,0	Rd130x1/4"	0,970	14134017	14138017



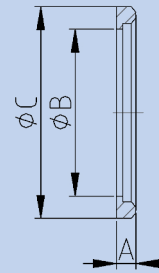
GASKET DIN 11851

DN / Inch	A	B	C	D	E	Kg	NBR (Perbunan)	EPDM	HNBR	MVQ (Siliconen)	FPM (Viton)	PTFE
25 / 1"	5,0	30,0	40,0			0,003	14400605	14400580	14400705	14400530	14400555	14400505
32 / 1,25"	5,0	36,0	46,0			0,004	14400607	14400582	14400707	14400532	14400557	14400507
40 / 1,5"	5,0	42,0	52,0			0,004	14400609	14400584	14400709	14400534	14400559	14400509
50 / 2"	5,0	54,0	64,0			0,005	14400611	14400586	14400711	14400536	14400561	14400511
65 / 2,5"	5,0	71,0	81,0			0,006	14400613	14400588	14400713	14400538	14400563	14400513
75 / 3"	5,0	78,0	88,0			0,008	14400614	14400589	14400714	14400539	14400564	14400514
100 / 4"	6,0	104,0	114,0			0,012	14400617	14400592	14400717	14400542	14400567	14400517



GASKET HIGH DIN 11851

DN / Inch	A	B	C	D	E	Kg	NBR (Perbunan)	EPDM	FPM (Viton)
25 / 1"	8,0	30,0	40,0			0,005	14500605	14500580	14500557
40 / 1,5"	8,0	42,0	52,0			0,007	14500609	14500584	14500559
50 / 2"	8,0	54,0	64,0			0,009	14500611	14500586	14500561
65 / 2,5"	8,0	71,0	81,0			0,012	14500613	14500588	14500563
3"	8,0	78,0	88,0			0,014	14500614	14500589	14500564
100 / 4"	8,0	104,0	114,0			0,016	14500617	14500592	14500567



GASKET WITH LIP DIN 11851 (L-PROFIEL)

DN / Inch	A	B	C	D	E	Kg	MVQ (Siliconen)	NBR (Perbunan)	EPDM	FPM (Viton)	XNBR
25 / 1"	6,0	26,5	40,0			0,004	14600530	14600605	14600580	14600555	14600705
32 / 1,25"	6,0	32,5	46,0			0,004	14600532	14600607	14600582	14600557	14600707
40 / 1,5"	6,0	38,5	52,0			0,005	14600534	14600609	14600584	14600559	14600709
50 / 2"	6,0	50,5	64,0			0,007	14600536	14600611	14600586	14600561	14600711
65 / 2,5"	6,0	66,5	81,0			0,010	14600538	14600613	14600588	14600563	14600713
3"	6,0	78,0	88,0			0,011	-	14600616	-	14600565	14600714
100 / 4"	6,0	100,5	114,0			0,013	14600542	14600617	14600592	14600567	14600717



## The Hygienic S.K.S. Union

S.K.S. offers a revolutionary breakthrough in solving your H.A.C.C.P. matters with the special designed seal-ring\* for DIN 11851 connections.

The connections in a process line are one of the most frequently encountered C.C.P. (Critical Control Points). A simple change of the gasket with the S.K.S. solution eliminates all negative aspects of a standard gasket.

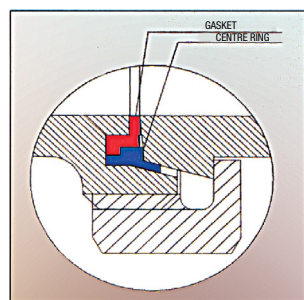
The S.K.S. seal consists of a Stainless Steel part and a rubber part. The S.K.S. seal complies with the E.H.E.D.G guidelines. The center ring and the S.K.S. liner (with integrated centre ring) enables a metal on metal connection between the male part and liner. This guaranties a perfect alignment and gives a limitation of deformation of the gasket. The special designed gasket fills all dead areas in the coupling and will expand to the outside in cases of high temperature. This solution takes all critical points of a DIN 11851 coupling away.

The S.K.S. gasket consists in two versions:

- Stainless Steel centre ring and a gasket :  
This execution is an easy solution to upgrade your installed couplings to the essential EHEDG guidelines. You do not have to replace the complete coupling.
- The S.K.S. liner and a gasket :  
This is the most eligible execution for your critical points because of the integrated centre ring. The S.K.S. liner makes installing and maintenance easier. The S.K.S. liner is perfect for new situations.

### Material

Guide-space ring : Stainless Steel 316 (W.St. 1.4401)



STANDARD DIN 11851



S.K.S. GASKET

- SKS liner: : Stainless steel 316L (W.St. 1.4404)  
 Seal ring: : Perbunan/NBR > Blue > -25° to +110° C  
                   EPDM > Black > -40° to +130° C  
                   FPM (Viton®) > Green > -15° to +220° C  
                   MVQ (Silicone) > Red > -40° to +130° C  
**Range:** : DN 10-15-20-25-32-40-50-65-80-100-125  
                   : Inch 1"-1,25"-1,5"-2"-2,5"-3"-4"

*The S.K.S. gasket physical and functional different from the standard DIN 11851 coupling. If the gasket is not right installed, it will leak and possibly it will be damaged. This kind of coupling with a limitation of deformation also has a limitation in application because of the strict mounting alignment. Always read the mounting instructions or make contact with one of our employees.*



**Q-Plus**  
Superior range that fits

**Q-Fitt**  
Quality range that fits

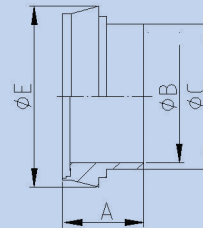




SKS GASKET SET DIN 11851



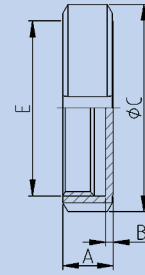
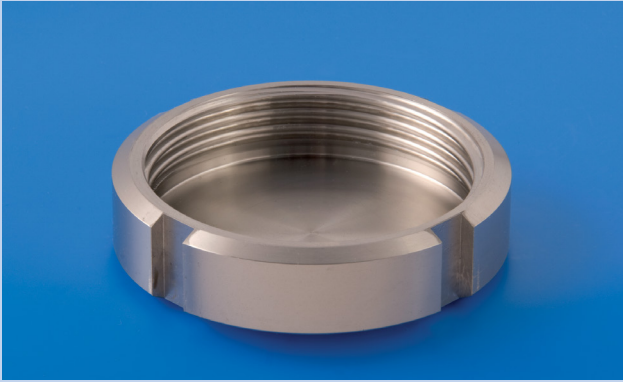
Inch	NBR (Perbunan)	EPDM	MVQ (Siliconen)	FKM (Viton)	316 Center ring
1"	14800604	14800579	14800529	14800554	14136606
1 1/2"	14800608	14800583	14800533	14800558	14136610
< 1985 2"	14800610	14800585	14800535	14800560	14136612
> 1985 2"	14800610	14800585	14800535	14800560	14136614
2 1/2"	14800612	14800587	14800537	14800562	14136616
3"	14800614	14800589	14800539	14800564	14136618
< 1976 4"	14800618	14800593	14800543	14800568	14136620
> 1976 4"	14800618	14800593	14800543	14800568	14136622



SKS LINER DIN 11851

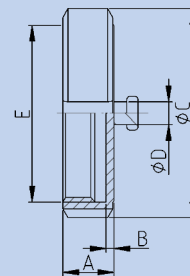


Inch	A	B	C	D	E	Kg	316L
1"	27,0	22,9	25,4		44,0	0,080	14238871
1,5"	31,0	35,1	38,1		56,0	0,130	14238873
2"	33,0	47,8	50,8		68,5	0,180	14238874
2,5"	37,0	60,2	63,5		86,0	0,330	14238875
3"	37,0	72,8	76,1		93,0	0,410	14238876
4"	49,5	97,4	101,6		121,0	0,670	14238877



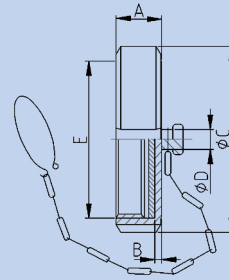
BLIND NUT FLAT DIN 11851

Inch	A	B	C	D	E	Kg	304L	316L
25 / 1"	21,5	3,5	63,0		Rd52x1/6"	0,210	14134230	14138230
32 / 1,25"	21,5	3,5	70,0		Rd58x1/6"	0,240	14134232	14138232
40 / 1,5"	21,5	3,5	78,0		Rd65x1/6"	0,310	14134234	14138234
50 / 2"	22,5	3,5	92,0		Rd78x1/6"	0,440	14134236	14138236
65 / 2,5"	25,5	4,5	112,0		Rd95x1/6"	0,750	14134238	14138238
75 / 3"	25,5	4,5	119,0		Rd104x1/6"	0,800	14134239	14138239
100 / 4"	31,5	5,5	148,0		Rd130x1/4"	1,480	14134242	14138242



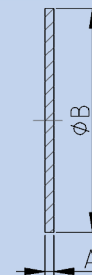
BLIND NUT WITH BOSS DIN 11851

DN / Inch	A	B	C	D	E	Kg	304	316L
25 / 1"	21,5	3,5	63,0	10,0	Rd52x1/6"	0,190	14134255	14138255
32 / 1,25"	21,5	3,5	70,0	10,0	Rd58x1/6"	0,250	14134257	14138257
40 / 1,5"	21,5	3,5	78,0	10,0	Rd65x1/6"	0,320	14134259	14138259
50 / 2"	22,5	3,5	92,0	10,0	Rd78x1/6"	0,490	14134261	14138261
65 / 2,5"	25,5	4,5	112,0	10,0	Rd95x1/6"	0,750	14134263	14138263
75 / 3"	25,5	4,5	119,0	10,0	Rd104x1/6"	0,850	14134264	14138264
100 / 4"	31,5	5,5	148,0	10,0	Rd130x1/4"	1,520	14134267	14138267



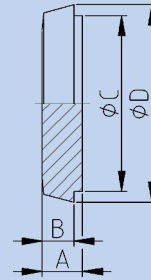
**BLIND NUT COMPLETE DIN 11851**

DN / Inch	A	B	C	D	E	Kg	304L	316L
25 / 1"	21,5	3,5	63,0	10,0	Rd52x1/6"	0,250	14134284	14138284
32 / 1,25"	21,5	3,5	70,0	10,0	Rd58x1/6"	0,290	14134287	14138287
40 / 1,5"	21,5	3,5	78,0	10,0	Rd65x1/6"	0,330	14134289	14138289
50 / 2"	22,5	3,5	92,0	10,0	Rd78x1/6"	0,460	14134291	14138291
65 / 2,5"	25,5	4,5	112,0	10,0	Rd95x1/6"	0,700	14134293	14138293
3"	25,5	4,5	119,0	10,0	Rd104x1/6"	0,900	14134294	14138294
100 / 4"	31,5	5,5	148,0	10,0	Rd130x1/4"	1,110	14134297	14138297



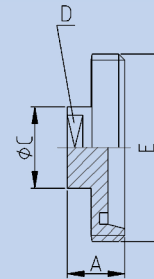
**GASKET DISC FOR BLIND NUT DIN 11851**

DN / Inch	A	B	C	D	E	Kg	NBR	EPDM	FKM (Viton)
25 / 1"	3,0	52,0				0,010	14100330	14100405	14100380
32 / 1,25"	3,0	58,0				0,011	14100332	14100407	14100382
40 / 1,5"	3,0	65,0				0,016	14100334	14100409	14100384
50 / 2"	3,0	78,0				0,021	14100336	14100411	14100386
65 / 2,5"	3,0	95,0				0,030	14100338	14100413	14100388
3"	3,0	110,0				0,050	14100339	14100414	14100389
100 / 4"	3,0	130,0				0,080	14100342	14100417	14100392



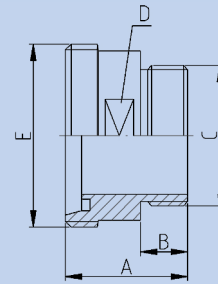
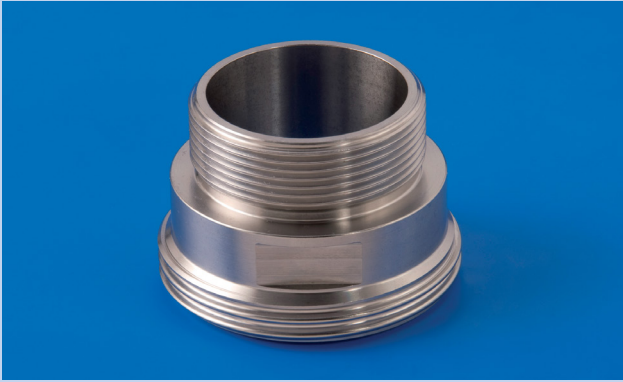
LINER BLANK DIN 11851 DB

DN / Inch	A	B	C	D	E	Kg	304(L)	316L
25 / 1"	13,0	10,0	35,0	44,0		0,120	14134155	14138155
32 / 1,25"	13,0	10,0	41,0	50,0		0,160	14134157	14138157
40 / 1,5"	13,0	10,0	48,0	56,0		0,220	14134159	14138159
50 / 2"	14,0	11,0	61,0	68,5		0,360	14134161	14138161
65 / 2,5"	16,0	12,0	79,0	86,0		0,660	14134163	14138163
3"	16,0	12,0	93,0	95,0		0,910	14134164	14138164
100 / 4"	20,0	15,0	114,0	121,0		1,660	14134167	14138167
125	22,0	17,0	137,0	150,0		2,840	14134169	14138169
150	24,0	18,0	163,0	176,0		4,290	14134170	14138170



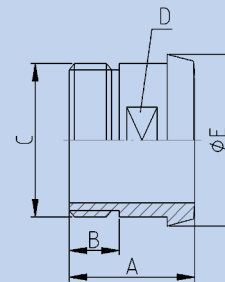
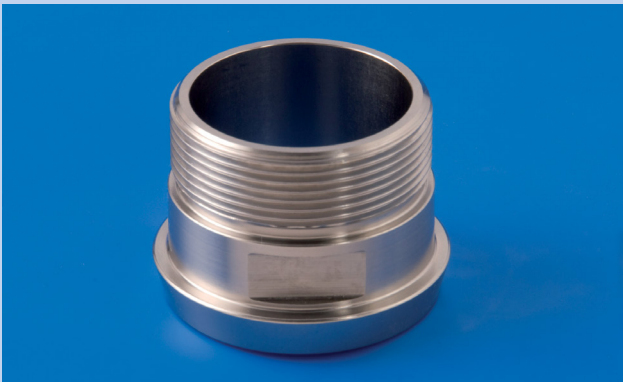
MALE PART BLANK DIN 11851

DN / Inch	A	B	C	D	E	Kg	304L	316L
25 / 1"	24,0		34,0	SW27	Rd52x1/6"	0,180	14134130	14138130
32 / 1,25"	24,0		34,0	SW27	Rd58x1/6"	0,210	14134132	14138132
40 / 1,5"	24,0		34,0	SW27	Rd65x1/6"	0,250	14134134	14138134
50 / 2"	24,0		34,0	SW27	Rd78x1/6"	0,330	14134136	14138136
65 / 2,5"	28,0		34,0	SW27	Rd95x1/6"	0,540	14134138	14138138
75 / 3"	28,0		34,0	SW27	Rd104x1/6"	0,900	14134139	14138139
100 / 4"	30,0		34,0	SW27	Rd130x1/4"	1,110	14134142	14138142



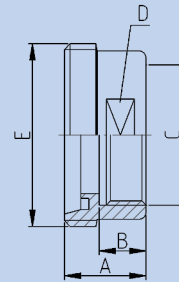
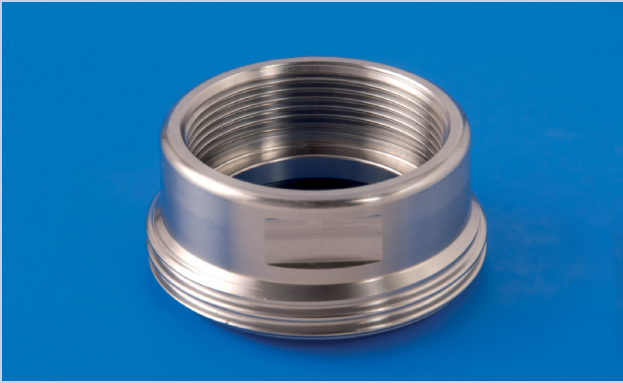
MALE PART THREADED OUTSIDE DIN 11851/BSP CT

DN	A	B	C	D	E	Kg	304(L)	316L
25	48,0	20,0	G1"	SW41	Rd52x1/6"	0,220	14134105	14138105
32	48,0	20,0	G1.1/4"	SW46	Rd58x1/6"	0,310	14134107	14138107
40	50,0	20,0	G1.1/2"	SW50	Rd65x1/6"	0,400	14134109	14138109
50	52,0	20,0	G2"	SW65	Rd78x1/6"	0,540	14134111	14138111
65	56,0	22,0	G2.1/2"	SW80	Rd95x1/6"	0,710	14134113	14138113
80	66,0	25,0	G3"	SW95	Rd110x1/4"	0,950	14134115	14138115
100	72,0	30,0	G4"	SW117	Rd130x1/4"	1,480	14134117	14138117



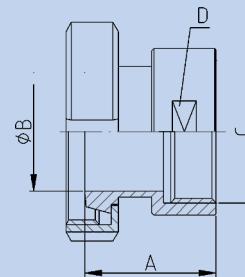
LINER THREADED OUTSIDE DIN 11851/BSP DT

DN	A	B	C	D	E	Kg	304(L)	316L
25	50,0	20,0	G1"	SW30	44,0	0,150	14134455	14138455
32	50,0	20,0	G1.1/4"	SW36	50,0	0,210	14134457	14138457
40	50,0	20,0	G1.1/2"	SW44	56,0	0,240	14134459	14138459
50	50,0	20,0	G2"	SW55	68,5	0,310	14134461	14138461
65	55,0	22,0	G2.1/2"	SW70	86,0	0,500	14134463	14138463
75 / 3"	60,0	25,0	G3"	SW88	100,0	0,550	14134464	14138464
100	70,0	30,0	G4"	SW110	121,0	1,220	14134467	14138467



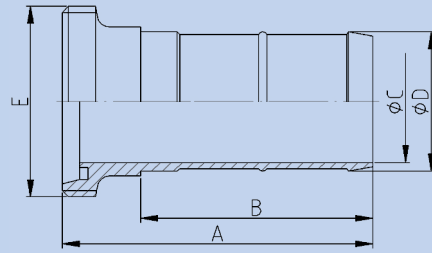
MALE PART THREADED INSIDE DIN 11851/BSP CT

DN	A	B	C	D	E	Kg	304(L)	316L
25	35,0	20,0	G1"	SW41	Rd52x1/6"	0,190	14134080	14138080
32	35,0	20,0	G1.1/4"	SW46	Rd58x1/6"	0,230	14134082	14138082
40	35,0	20,0	G1.1/2"	SW55	Rd65x1/6"	0,300	14134084	14138084
50	35,0	20,0	G2"	SW65	Rd78x1/6"	0,360	14134086	14138086
65	38,0	22,0	G2.1/2"	SW80	Rd95x1/6"	0,490	14134088	14138088
80	43,0	25,0	G3"	SW95	Rd110x1/4"	0,680	14134090	14138090
100	50,0	30,0	G4"	SW117	Rd130x1/4"	0,720	14134092	14138092



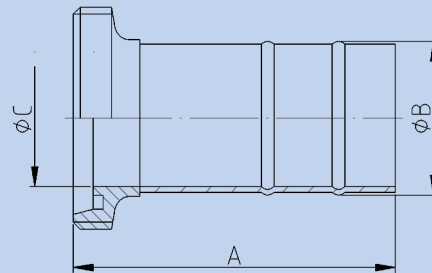
LINER THREADED INSIDE DIN 11851 DT

DN	A	B	C	D	E	Kg	304(L)	316L
25	49,0	26,0	G1"	SW41		0,390	14134430	14138430
32	52,0	32,0	G1.1/4"	SW46		0,490	14134432	14138432
40	53,0	38,0	G1.1/2"	SW55		0,570	14134434	14138434
50	55,0	50,0	G2"	SW65		0,740	14134436	14138436
65	61,0	66,0	G2.1/2"	SW80		1,330	14134438	14138438
80	67,0	81,0	G3"	SW95		1,550	14134440	14138440
100	76,0	100,0	G4"	SW117		2,340	14134442	14138442



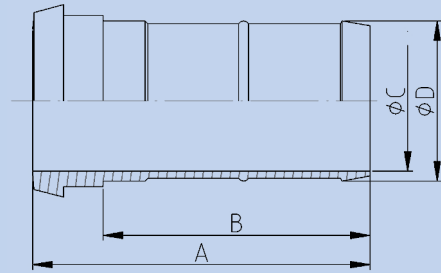
HOSE MALE PART TYPE DIN DIN 11851

DN / Inch	A	B	C	D	E	Kg	304(L)	316L
25 / 1"	87,0	57,0	26,0	32,0	Rd52x1/6"	0,230	14234255	14238255
32 / 1,25"	97,0	67,0	32,0	40,0	Rd58x1/6"	0,330	14234257	14238257
40 / 1,5"	112,0	81,0	38,0	48,0	Rd65x1/6"	0,520	14234259	14238259
50 / 2"	127,0	95,0	50,0	57,0	Rd78x1/6"	0,655	14234261	14238261
65 / 2,5"	148,0	112,0	66,0	76,0	Rd95x1/6"	1,135	14234263	14238263
100 / 4"	190,0	146,0	100,0	110,0	Rd130x1/4"	2,400	14234267	14238267



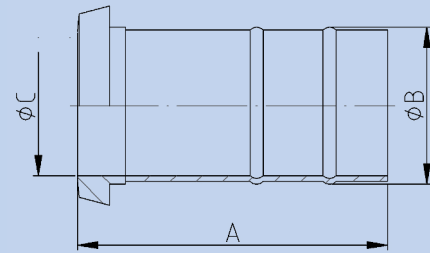
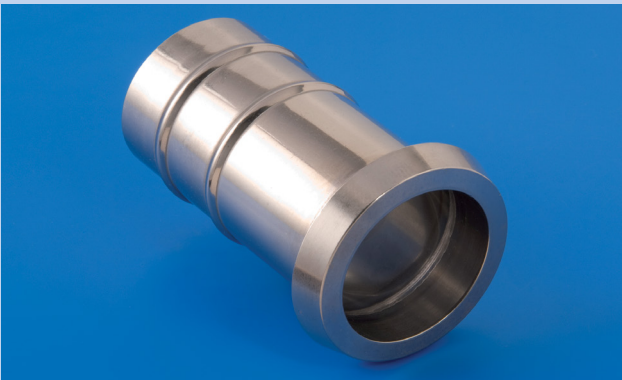
HOSE MALE PART FORCED DIN 11851

DN / Inch	A	B	C	D	E	Kg	304(L)	316L
25 / 1"	82,0	30,0	26,0			0,130	14234354	14238354
32 / 1,25"	92,0	35,5	32,0			0,170	14234356	14238356
40 / 1,5"	102,0	43,0	38,0			0,210	14234358	14238358
50 / 2"	113,0	55,0	50,0			0,300	14234360	14238360
65 / 2,5"	125,0	73,0	66,0			0,590	14234362	14238362
3"	135,0	89,0	81,0			0,980	14234364	14238364
100 / 4"	150,0	108,0	100,0			1,070	14234368	14238368



HOSE LINER TYPE DIN DIN 11851

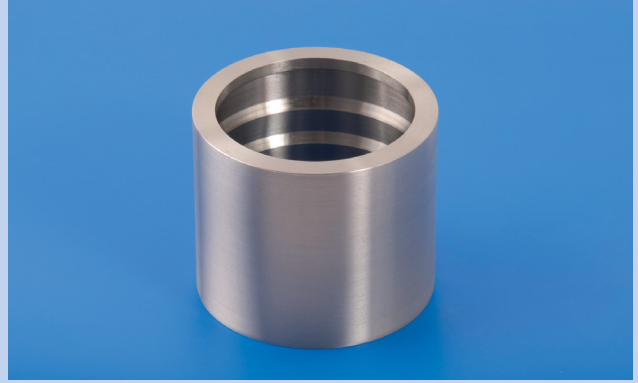
DN / Inch	A	B	C	D	E	Kg	304(L)	316L
25 / 1"	80,0	57,0	26,0	32,0		0,190	14234280	14238280
32 / 1,25"	90,0	67,0	32,0	40,0		0,270	14234282	14238282
40 / 1,5"	105,0	81,0	38,0	48,0		0,420	14234284	14238284
50 / 2"	120,0	95,0	50,0	57,0		0,580	14234286	14238286
65 / 2,5"	140,0	112,0	66,0	76,0		1,075	14234288	14238288
100 / 4"	180,0	146,0	100,0	110,0		2,130	14234292	14238292



HOSE LINER FORCED DIN 11851

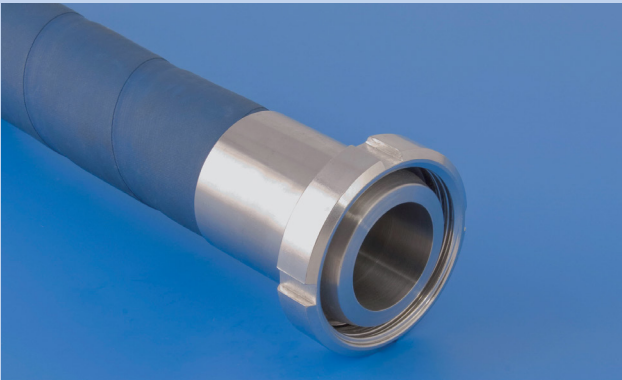
DN / Inch	A	B	C	D	E	Kg	304(L)	316L
25 / 1"	75,0	30,0	26,0			0,100	14234379	14238379
32 / 1,25"	85,0	35,5	32,0			0,120	14234381	14238381
40 / 1,5"	95,0	43,0	38,0			0,160	14234383	14238383
50 / 2"	106,0	55,0	50,0			0,245	14234385	14238385
65 / 2,5"	117,0	73,0	66,0			0,530	14234387	14238387
3"	142,0	79,0	73,0			0,660	14234389	14238389
100 / 4"	140,0	108,0	100,0			0,935	14238393	14238393





**HYGIENIC HOSE CONNECTIONS (RMO)**

Inch	Press liner 316	Press sleeve 304	clamp shells alumium
1"	36536301	36533201	36501221
1,25"	36536303	36533202	36501223
1,5"	36536305	36533203	36501225
2"	36536307	36533204	36501227
2,5"	36536309	36533205	36501229
3"	36536311	36533206	36501231
4"	36536313	36533207	36501235



**HYGIENIC PRESSED HOSE CONNECTION**

# Clamp Coupling EN DIN32676 + ISO 2852

The clamp coupling is an often applied coupling within the hygienic industry. But they are available in many different norms and tube sizes. They all belong to other norm families. The most common norms are represented in this documentation. The selected versions suit on the tube sizes mentioned in norm EN-10357 series D. (Inches)

ISO-2852 : based on the SMS sizes (ISO2037)

BS-4825-3 : based on the British Standard

DIN-32676 : Inch sizes as in the ASME BPE (A-270)

ASME BPE (A-270) : American inches as known in the pharmaceutical industry.

Dutch inches : Inch sizes with 1.5mm wall thickness

The clamp couplings can deviate in flange diameter, tube diameter, gasket

groove diameter or angle of the flange.

## Ra surface

H3: Ra < 0.8µm, standard W.St. 1.4404, optional is 1.4435 deliverable.

## Connection

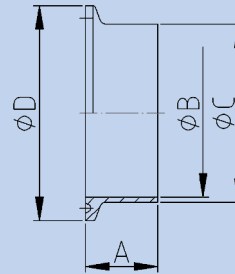
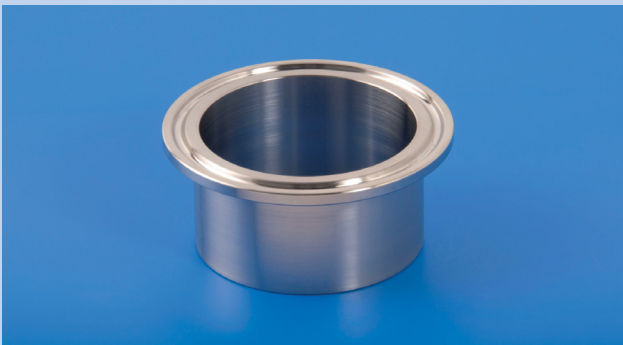
Butt-weld ferrule (S). Other connection types are not normalized: Blind, hose ferrule, inside threaded and outside threaded.

## Seals

EPDM, FKM (Viton), MVQ (silicone), PTFE (Teflon) or Envelope PTFE/EPDM, PTFE/FKM. 2 Types : Type A with lip and Type B without lip

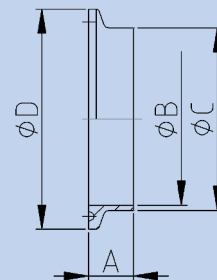
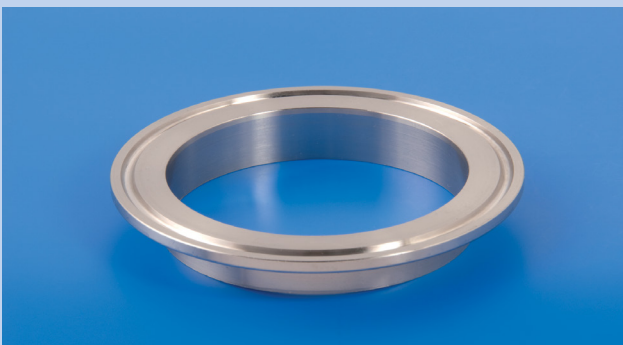
## Certificates

3.1 certificate according EN 10204. The 2.1 of 2.2 are available for the Ra value or the composition of the stainless steel.



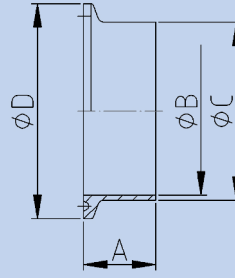
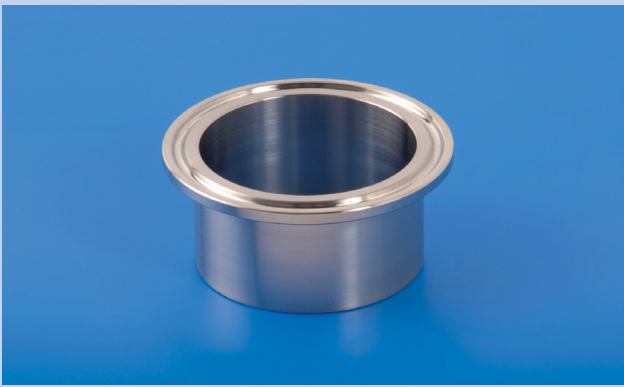
CLAMP FERRULE ISO 2852

Inch	A	B	C	D	E	Kg	304L	316L
1"	21,5	22,9	25,4	50,5		0,070	18234579	18238579
1,5"	21,5	35,1	38,1	50,5		0,050	18234583	18238583
2"	21,5	47,8	50,8	64,0		0,070	18234585	18238585
2,5"	28,0	60,5	63,5	77,5		0,100	18234587	18238587
3"	28,0	72,1	76,1	91,0		0,170	18234589	18238589
4"	28,0	97,6	101,6	119,0		0,240	18234593	18238593



CLAMPFERRULE SHORT ISO 2852

Inch	A	B	C	D	E	Kg	304L	316L
1"	13,0	22,9	25,4	50,5		0,060	18234554	18238554
1,5"	13,0	35,1	38,1	50,5		0,040	18234558	18238558
2"	13,0	47,8	50,8	64,0		0,060	18234560	18238560
2,5"	13,0	60,5	63,5	77,5		0,080	18234562	18238562
3"	13,0	72,1	76,1	91,0		0,100	18234564	18238564
4"	13,0	97,6	101,6	119,0		0,180	18234568	18238568

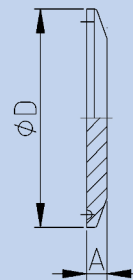


**WELDING FERRULE DIN 32676 KL SERIE C**

Inch	A	B	C	D	E	Kg	H3o 1.4404	H4o 1.4404	HE5o 1.4435
0,5"	28,6	9,4	12,7	25,0		0,010	18538000	18539000	18537000
0,75"	28,6	15,75	19,05	25,0		0,040	18538001	18539001	18537001
1"	36,0	22,1	25,4	50,5		0,100	18538004	18539004	18537004
1,5"	36,0	34,8	38,1	50,5		0,100	18538008	18539008	18537008
2"	36,0	47,5	50,8	64,0		0,160	18538010	18539010	18537010
2,5"	36,0	60,2	63,5	77,5		0,200	18538012	18539012	18537012
3"	48,0	72,9	76,2	91,0		0,280	18538014	18539014	18537014
4"	48,0	97,4	101,6	119,0		0,440	18538018	18539018	18537018

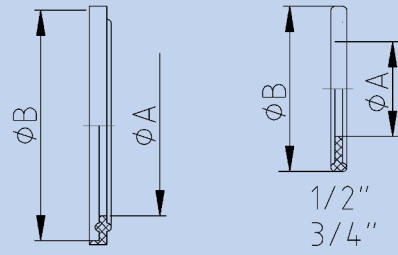
**CLAMP FERRULE ASME 3A L14AM**

Inch	A	B	C	D	E	Kg	304L	316L
1"	28,7	22,1	25,4	50,5		0,090	18534579	18538579
1,5"	28,7	34,8	38,1	50,5		0,100	18534583	18538583
2"	28,7	47,5	50,8	64		0,130	18534585	18538585
2,5"	28,7	60,2	63,5	77,5		0,280	18534587	18538587
3"	28,7	72,9	76,2	91		0,280	18534589	18538589
4"	28,7	97,4	101,6	119		0,400	18534593	18538593



**BLIND FERRULE CLAMP DIN 32676 / ISO2852**

DN / Inch / ISO	A	B	C	D	E	Kg	1.4404
6 – 8 / 0,5"-0.75"	6,0			25,0		0,060	18138525
25-40 / 1"-1,5" / 26,9-33,7	6,0			50,5		0,070	18138529
50 / 2" / 42,4-48,3	6,0			64,0		0,100	18138535
2,5" / 60,3	6,0			77,5		0,170	18138537
65 / 3" / 76,1	7,0			91,0		0,240	18138539
100 / 4"	8,0			119,0		0,540	18138543



**GASKET CLAMP UNION**

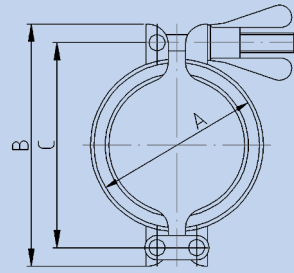
Inch	A	B	C	D	E	Kg	NBR	EPDM	MVQ (Siliconen)	FPM (Viton)	PTFE (Teflon)
0,5"	10,6	21,8				0,005	18400599	18400574	18400524	18400549	18400499
0,75"	16,0	21,8				0,005	18400600	18400575	18400525	18400550	18400500
1"	23,1	50,5				0,005	18400604	18400579	18400529	18400554	18400504
1,5"	35,3	50,5				0,004	18400608	18400583	18400533	18400558	18400508
2"	48,0	64,0				0,005	18400610	18400585	18400535	18400560	18400510
2,5"	60,7	77,5				0,007	18400612	18400587	18400537	18400562	18400512
3"	72,3	91,0				0,009	18400614	18400589	18400539	18400564	18400514
4"	97,8	119,0				0,012	18400618	18400593	18400543	18400568	18400518

**GASKET CLAMP DIN 32676 SERIE C (ASME BPE TYPE 40MP/MO)**

Inch	A	B	C	D	E	Kg	MVQ/ Silicone	NBR	EPDM	FKM/Viton	PTFE	FKM/PTFE	EPDM/PTFE
0,5"	10,6	21,8				0,003	18500524	18500599	18500574	18500549	18500499	-	-
0,75"	16,0	21,8				0,004	18500525	18500600	18500575	18500550	18500500	-	-
1"	23,1	50,5				0,005	18500529	18500604	18500579	18500554	18500504	18400204	18400304
1,5"	35,3	50,5				0,004	18500533	18500608	18500583	18500558	18500508	18400208	18400308
2"	48,0	64,0				0,005	18500535	18500610	18500585	18500560	18500510	18400210	18400310
2,5"	60,7	77,5				0,007	18500537	18500612	18500587	18500562	18500512	18400212	18400312
3"	72,3	91,0				0,009	18500539	18500614	18500589	18500564	18500514	18400214	18400314
4"	97,8	119,0				0,012	18500543	18500618	18500593	18500568	18500518	18400218	18400318

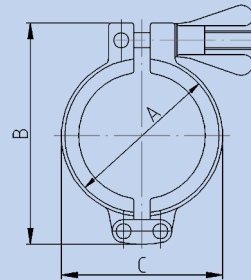


**CROSS-SECTION GASKET AREA  
CLAMP  
COUPLING**



CLAMP LIGHT TYPE ISO 2582 CLAMP

Inch	A	B	C	D	E	Kg	SKS nr.
1"-1,5"	53,0	84,5	69,0			0,130	18134554
2"	67,0	103,0	88,0			0,150	18134560
2,5"	80,0	118,0	103,0			0,170	18134562
3"	94,0	132,0	118,0			0,180	18134564
4"	122,0	163,0	147,0			0,190	18134568



CLAMP HEAVY TYPE ISO 2852 CLAMP

Inch	A	B	C	D	E	Kg	SKS nr.
0,5-0,75"	28,0	51,0	33,0			0,150	18134501
1-1,5"	53,0	90,0	57,0			0,220	18134504
2"	67,0	106,0	73,0			0,300	18134510
2,5"	80,0	120,0	89,0			0,320	18134512
3"	94,0	135,0	99,0			0,340	18134514
4"	122,0	162,0	127,0			0,370	18134518
5,5"	159,0	220,0	169,0			1,170	18134519

## DIN 11864 Couplings

According to the norm DIN11864 there are three different connection types. The main differences between these types is the way of connecting.  
 Type 1 = Screw connection: connection malepart and liner by nut  
 Type 2 = Flange connection: connection flanges by nuts and bolts  
 Type 3 = Clamp connection: connection flanges by clamp  
 The sealing principle is in all types the same.

Within this norm the choice can be made for the most suitable way of connecting an application. For all kind of couplings have various surface finish possibilities and different kind of materials and quality. According the norm there is also the possibility to choose for 1.4404 or 1.4435 stainless steel. The last one can be delivered with a low  $\Delta$  Ferrite content. The DIN 11864 always has long welding ends (orbital weldable).

The common short version is officially called the DIN 11853 and is meant for the food industry (EN-10357). S.K.S. compiled its standard package based on the most common versions (material / external surface finishing).  
 H3 standard W.St. 1.4404, optional 1.4435 is deliverable.  
 H4 standard W.St. 1.4404, optional 1.4435 is deliverable.  
 HE5 standard W.St. 1.4435.

### Versions

Type 1: Screw connection consists of liner, male thread, seal and nut. Deliverable in the size ranges A, B and C  
 Type 2: Flange connection consisting of flange with collar, flange with chest, seals and bolt and nuts kit. Deliverable in the size ranges A, B en C  
 Type 3: Clamp connection consisting of ferrule with collar, ferrule with chest, seal and clamp mounting materials. Deliverable in size ranges A, B en C

### Material table

Stainless steel according EN DIN 10088  
 Seal materials are: EPDM, HNBR, FKM and FFKM.  
 According FDA §177.2600

### Size table and tolerances

According DIN 11864 and ISO 2768

The same size ranges as in the tube and weld fitting range: 3 size ranges, Series A, B and C

Series A: concerns the mm dimensions according to DIN 11850 Reihe 2.  
 Series B: Concerns the ISO dimensions, in the market also called the ISO 1127.  
 Series C: Concerns the Inch dimensions and are exactly the same as the dimensions according ASME BPE A270

### Pressure application (tot 140°C)

Size Screw coupling Flange connection Clamp connection  
 DN10 – DN40 max. 40 bar max. 25 bar max. 40 bar  
 DN50 – DN100 max. 25 bar max. 16 bar max. 25 bar  
 DN125 – DN150 max. 16 bar max. 10 bar max. 16 bar

### Version

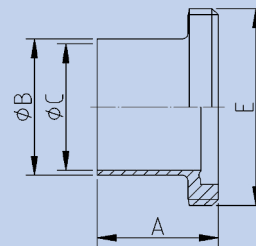
The union parts are cleaned, free of oil and grease, dry and provided of PE end caps. Packed in a sealed plastic sleeve. According DIN 11864.

### Surface finish Ra

Internal surface finish mechanical polished or pulled  
 H2o Ra max. 0,8 / 1,6  $\mu\text{m}$   
 H30 Ra max. 0,8 / 0,8  $\mu\text{m}$   
 H4o Ra max. 0,4 / 0,4  $\mu\text{m}$   
 Internal surface finish mechanical polished or electrolytic polished  
 HE4o Ra max. 0,4 / 0,4  $\mu\text{m}$   
 HE5o Ra max. 0,25 / 0,25  $\mu\text{m}$

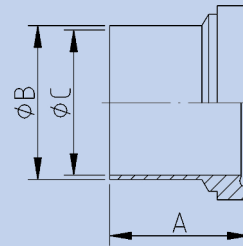
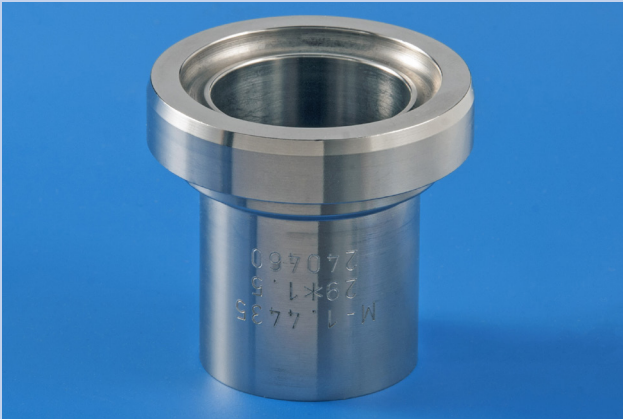
### Certificates

3.1 certificate according EN 10204  
 Eventually the 2.1 or 2.2 declarations are possible to deliver for the Ra value or the composition of the stainless steel.



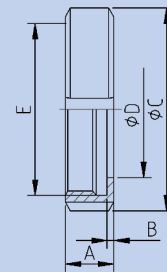
MALE PART DIN 11864 A-1 SERIE C

MM (Inch)	A	B	C	D	E	Kg	H3o 1.4404	H4o 1.4404	H5o 1.4435
12,7 x 1,65 (0,5")	41,0	12,7	9,4		Rd28x1/8"	0,020	16237999	16238999	16236999
19,05 x 1,65 (0,75")	41,0	19,05	15,75		Rd34x1/8"	0,040	16238000	16239000	16237000
25,4 x 1,65 (1")	43,0	25,4	22,1		Rd52x1/6"	0,160	16238004	16239004	16237004
38,1 x 1,65 (1,5")	48,5	38,1	34,8		Rd65x1/6"	0,220	16238008	16239008	16237008
50,8 x 1,65 (2")	48,5	50,8	47,5		Rd78x1/6"	0,270	16238010	16239010	16237010
63,5 x 1,65 (2,5")	60,0	63,5	60,2		Rd95x1/6"	0,440	16238012	16239012	16237012
76,2 x 1,65 (3")	64,0	76,2	72,9		Rd110x1/4"	0,640	16238014	16239014	16237014
101,6 x 2,11 (4")	64,0	101,6	97,4		Rd130x1/4"	0,760	16238018	16239018	16237018



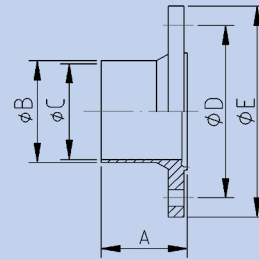
LINER PART DIN 11864 A-1 SERIE C

MM (Inch)	A	B	C	D	E	Kg	H3o 1.4404	H4o 1.4404	H5o 1.4435
12,7 x 1,65 (0,5")	39,0	12,7	9,4			0,020	16238024	16239024	16237024
19,05 x 1,65 (0,75")	39,0	19,05	15,75			0,040	16238025	16239025	16237025
25,4 x 1,65 (1")	40,0	25,4	22,1			0,120	16238029	16239029	16237029
38,1 x 1,65 (1,5")	46,5	38,1	34,8			0,180	16238033	16239033	16237033
50,8 x 1,65 (2")	47,5	50,8	47,5			0,240	16238035	16239035	16237035
63,5 x 1,65 (2,5")	63,0	63,5	60,2			0,460	16238037	16239037	16237037
76,2 x 1,65 (3")	61,0	76,2	72,9			0,580	16238039	16239039	16237039
101,6 x 2,11 (4")	65,0	101,6	97,4			0,820	16239043	16239043	16239043



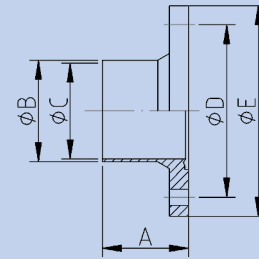
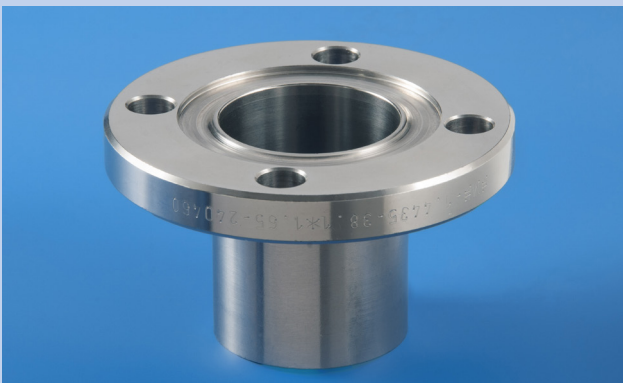
NUT DIN 11864-1 F

DN / Inch	A	B	C	D	E	Kg	304(L)	316L
10 / 1,2"	18,0	3,0	38,0	19,0	Rd28x1/8"	0,060	14134001	14138001
15 / 0,75"	18,0	3,0	44,0	25,0	Rd34x1/8"	0,080	14134002	14138002
25 / 1"	21,0	3,0	63,0	36,0	Rd52x1/6"	0,160	14134005	14138005
40 / 1,5"	21,0	3,0	78,0	49,0	Rd65x1/6"	0,240	14134009	14138009
50 / 2"	22,0	3,0	92,0	62,0	Rd78x1/6"	0,320	14134011	14138011
65 / 2,5"	25,0	4,0	112,0	80,0	Rd95x1/6"	0,530	14134013	14138013
80 / 3"	29,0	4,0	127,0	94,0	Rd110x1/4"	0,720	14134015	14138015
100 / 4"	31,0	5,0	148,0	115,0	Rd130x1/4"	0,970	14134017	14138017



FLANGE WITH GROOVE DIN 11864 A-2 SERIE C

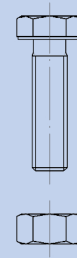
MM (Inch)	A	B	C	D	E	Kg	H3o 1.4404	H4o 1.4404	H5o 1.4435
12,7 x 1,65 (0,5")	41,5	12,7	9,4	37,0	54,0	0,160	16238099	16239099	16237099
19,05 x 1,65 (0,75")	41,5	19,05	15,75	42,0	59,0	0,200	16238100	16239100	16237100
25,4 x 1,65 (1")	41,5	25,4	22,1	49,0	66,0	0,260	16238104	16239104	16237104
38,1 x 1,65 (1,5")	46,5	38,0	34,8	62,0	79,0	0,340	16238108	16239108	16237108
50,8 x 1,65 (2")	46,5	51,0	47,5	75,0	92,0	0,440	16238110	16239110	16237110
63,5 x 1,65 (2,5")	55,5	63,5	60,2	89,0	107,0	0,560	16238112	16239112	16237112
76,2 x 1,65 (3")	57,5	76,2	72,9	104,0	125,0	0,900	16238114	16239114	16237114
101,6 x 2,11 (4")	59,5	101,6	97,4	135,0	157,0	1,480	16238118	16239118	16237118



FLANGE WITH COLLAR DIN 11864 A-2 SERIE C

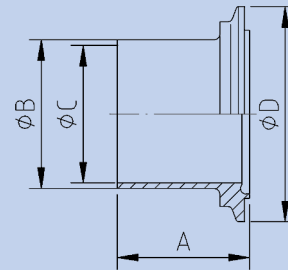
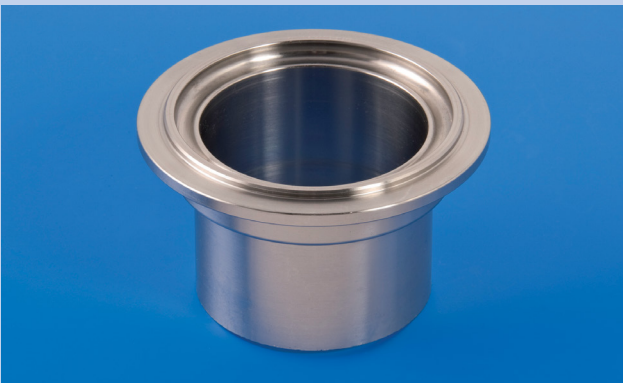
MM (Inch)	A	B	C	D	E	Kg	H3o 1.4404	H4o 1.4404	H5o 1.4435
12,7 x 1,65 (0,5")	40,0	12,7	9,4	37,0	54,0	0,200	16238124	16239124	16237124
19,05 x 1,65 (0,75")	40,0	19,05	15,75	42,0	59,0	0,240	16238125	16239125	16237125
25,4 x 1,65 (1")	40,0	25,4	22,1	49,0	66,0	0,260	16238129	16239129	16237129
38,1 x 1,65 (1,5")	45,0	38,1	34,8	62,0	79,0	0,340	16238133	16239133	16237133
50,8 x 1,65 (2")	45,0	50,8	47,5	75,0	92,0	0,440	16238135	16239135	16237135
63,5 x 1,65 (2,5")	54,0	63,5	60,2	89,0	107,0	0,560	16238137	16239137	16237137
76,2 x 1,65 (3")	56,0	76,2	72,9	104,0	125,0	0,900	16238139	16239139	16237139
101,6 x 2,11 (4")	58,0	101,6	97,4	135,0	157,0	1,480	16238143	16239143	16237143





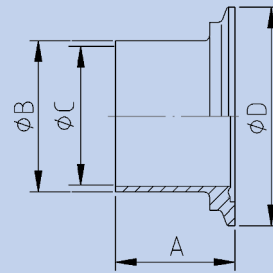
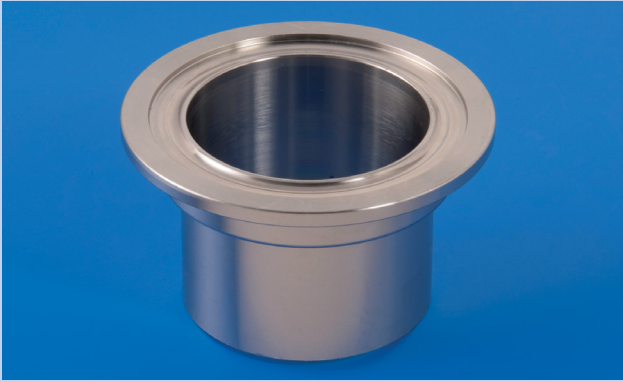
ASSEMBLY SET FLANGE CONNECTION DIN 11864-2-A

DN	DIN 933	DIN 934	C	D	E	Kg	304(L)
1/2"-2"	4 st. M8x30	4 st. M8				0,080	16238271
2,5"	8 st. M8x30	8 st. M8				0,160	16238272
3"	8 st. M10x30	8 st. M10				0,320	16238274
4"	8 st. M10x35	8 st. M10				0,340	16238275



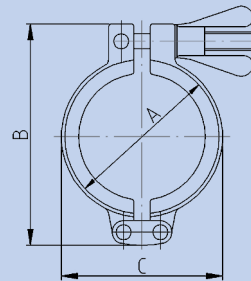
CLAMP FERRULE WITH GROOVE DIN 11864 A-3 SERIE C

MM (Inch)	A	B	C	D	E	Kg	H3 1.4404	H4 1.4404	H5 1.4435
12,7 x 1,65 (0,5")	39,5	12,7	9,4	34,0		0,060	16238399	16239399	16237399
19,05 x 1,65 (0,75")	39,5	19,05	15,75	34,0		0,060	16238400	16239400	16237400
25,4 x 1,65 (1")	40,0	25,4	22,1	50,5		0,140	16238404	16239404	16237404
38,1 x 1,65 (1,5")	45,5	38,1	34,8	64,0		0,220	16238408	16239408	16237408
50,8 x 1,65 (2")	46,0	50,8	47,5	77,5		0,260	16238410	16239410	16237410
63,5 x 1,65 (2,5")	59,0	63,5	60,2	91,0		0,420	16238412	16239412	16237412
76,2 x 1,65 (3")	60,0	76,2	72,9	106,0		0,580	16238414	16239414	16237414
101,6 x 2,11 (4")	61,0	101,6	97,4	130,0		0,800	16238418	16239418	16237418



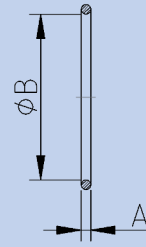
CLAMP FERRULE WITH COLLAR DIN 11864 A-3 SERIE C

MM (Inch)	A	B	C	D	E	Kg	H3 1.4404	H4 1.4404	H5 1.4435
12,7 x 1,65 (0,5")	38,0	12,7	9,4	34,0		0,060	16238424	16239424	16237424
19,05 x 1,65 (0,75")	38,0	19,05	15,75	34,0		0,060	16238425	16239425	16237425
25,4 x 1,65 (1")	38,5	25,4	22,1	50,5		0,140	16238429	16239429	16237429
38,1 x 1,65 (1,5")	44,0	38,1	34,8	64,0		0,220	16238433	16239433	16237433
50,8 x 1,65 (2")	44,5	50,8	47,5	77,5		0,260	16238435	16239435	16237435
63,5 x 1,65 (2,5")	57,5	63,5	60,2	91,0		0,420	16238437	16239437	16237437
76,2 x 1,65 (3")	58,5	76,2	72,9	106,0		0,580	16238439	16239439	16237439
101,6 x 2,11 (4")	59,5	101,6	97,4	130,0		0,800	16238443	16239443	16237443



CLAMP HEAVY DIN 11864/11853

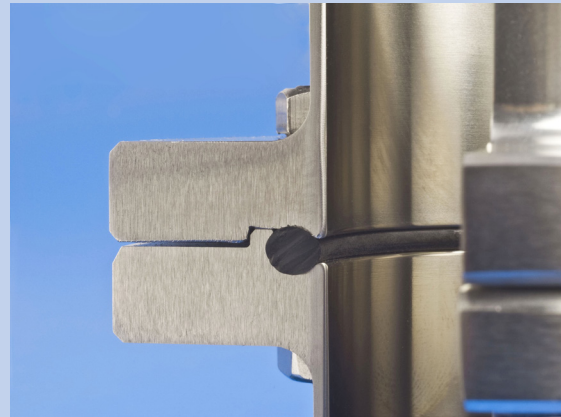
DN / Inch / ISO	A	B	C	D	E	Kg	304
10-15 / 0,5"-0,75" / 13,5-21,3	37,0	70,0	43,0			0,175	18134501
20-32 / 1" / 26,9-33,7	53,0	90,0	57,0			0,220	18134504
40 / 1,5" / 42,4-48,3	67,0	106,0	73,0			0,300	18134510
50 / 2"	80,0	120,0	89,0			0,320	18134512
65 / 2,5" / 60,3	94,0	135,0	99,0			0,340	14134514
80 / 3" / 76,1	109,0	149,0	118,0			0,430	18134515
100 / 4"	134,0	180,0	145,0			0,580	18134518ISO



**GASKET O-RING DIN 11864 A SERIE C**

MM (Inch)	A	B	C	D	E	Kg	EPDM	HNBR	FKM/Viton	MVQ/Silicone
12,7 x 1,65 (0,5")	3,5	12,0				0,001	16400576	16400701	16400551	16400526
19,05 x 1,65 (0,75")	3,5	18,0				0,001	16400577	16400701	16400552	16400527
25,4 x 1,65 (1")	3,5	24,0				0,001	16400579	16400704	16400554	16400529
38,1 x 1,65 (1,5")	5,0	37,0				0,003	16400583	16400708	16400557	16400533
50,8 x 1,65 (2")	5,0	50,0				0,003	16400585	16400710	16400559	16400535
63,5 x 1,65 (2,5")	5,0	62,0				0,004	16400587	16400712	16400561	16400537
76,2 x 1,65 (3")	5,0	75,0				0,005	16400589	16400714	16400563	16400539
101,6 x 2,11 (4")	5,0	100,0				0,007	16400593	16400716	16400567	16400543

**CROSS-SECTION GASKET AREA DIN 11864 COUPLING**



## DIN 11853 Connection

This recent developed connections is a direct equivalent from the DIN-11864 connection which is made for pharmaceutical applications. The hygienic aspects of the DIN-11864 are also suitable for the food industry and therefore is the DIN-11853 connection created. The difference between these two versions is due to the norm family and is visual in the length of the welding part. DIN-11853 couplings are also available in 304L/1.4307. The connecting part of each connection is an exact copy of the DIN-11864 and the parts including the gaskets are interchangeable.

### Size range and material

According DIN-11853-D (inches)

The coupling parts should accordingly to the norm, be made out of forged pre-material.

### Tolerances and specifications

DIN-405-1 and 2, DIN-11887, DIN ISO-2768-1, ISO 48, FDA and BGA

### Execution and codes

DIN-11853-1 screwed connection

DIN-11853-2 flanged connection

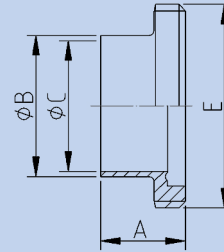
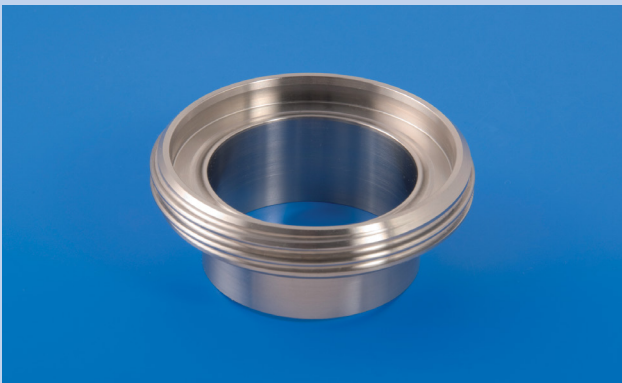
DIN-11853-3 Clamp connection

Ra value inside  $\leq 0.8\mu\text{m}$ , outside  $\leq 1.0\mu\text{m}$

**Connection** : weld (S). Other connection are not normalized : Blind, Hose connection, outside thread and inside thread.

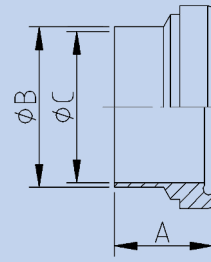
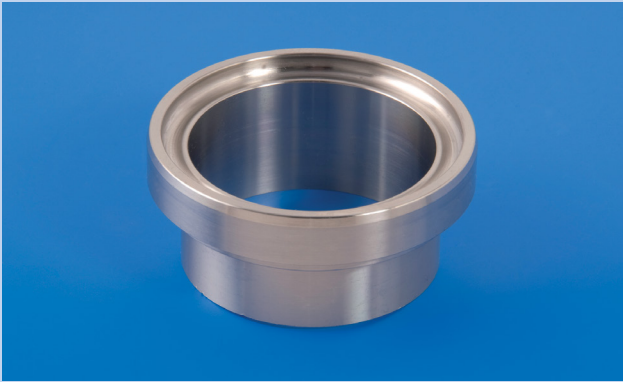
### Gaskets

EPDM, FKM (Viton), HNBR and MVQ (Silicone)



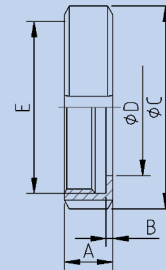
### MALE PART DIN 11853

MM (Inch)	A	B	C	D	E	Kg	304L	316L
12,7 x 1,65 (0,5")	19	12,7	9,4		Rd28x1/8"	0,020	16233999	16235999
19,05 x 1,65 (0,75")	19	19,05	15,75		Rd34x1/8"	0,040	16234000	16236000
25,4 x 1,65 (1")	26	25,4	22,1		Rd52x1/6"	0,160	16234004	16236004
38,1 x 1,65 (1,5")	31	37,1	34,8		Rd65x1/6"	0,220	16234008	16236008
50,8 x 1,65 (2")	31	50,8	47,5		Rd78x1/6"	0,270	16234010	16236010
63,5 x 1,65 (2,5")	36	63,5	60,2		Rd95x1/6"	0,440	16234012	16236012
76,2 x 1,65 (3")	42	76,2	72,9		Rd110x1/4"	0,640	16234014	16236014
101,6 x 2,11 (4")	50	101,6	97,4		Rd130x1/4"	0,760	16234018	16236018



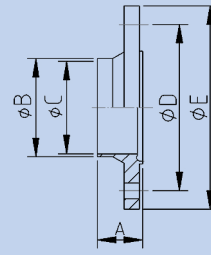
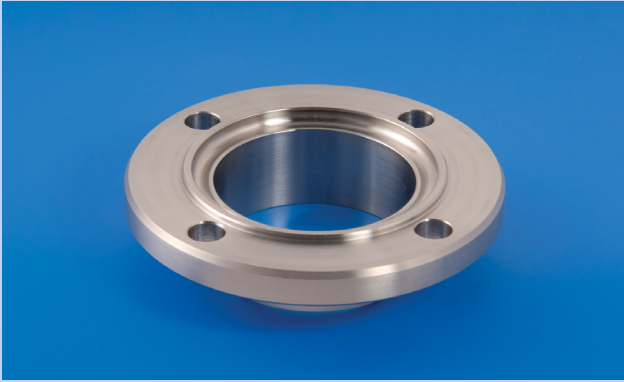
LINER DIN 11853 SERIE C

MM (Inch)	A	B	C	D	E	Kg	304L	316L
12,7 x 1,65 (0,5")	17	12,7	9,4			0,020	16234024	16236024
19,05 x 1,65 (0,75")	17	19,05	15,75			0,020	16234025	16236025
25,4 x 1,65 (1")	22	25,4	22,1			0,100	16234029	16236029
38,1 x 1,65 (1,5")	26	37,1	34,8			0,160	16234033	16236033
50,8 x 1,65 (2")	30	50,8	47,5			0,200	16234035	16236035
63,5 x 1,65 (2,5")	34	63,5	60,2			0,420	16234037	16236037
76,2 x 1,65 (3")	38	76,2	72,9			0,500	16234039	16236039
101,6 x 2,11 (4")	46	101,6	97,4			0,760	16234043	16236043



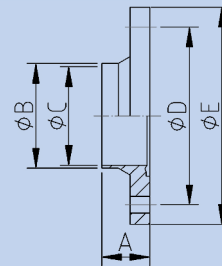
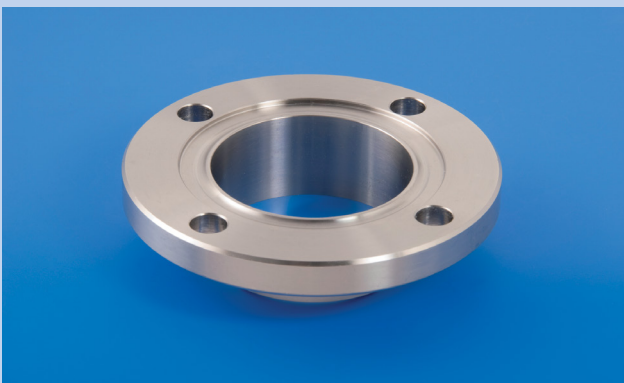
NUT DIN 11853 F

DN / Inch	A	B	C	D	E	Kg	304(L)	316L
10 / 1,2"	18,0	3,0	38,0	19,0	Rd28x1/8"	0,060	14134001	14138001
15 / 0,75"	18,0	3,0	44,0	25,0	Rd34x1/8"	0,080	14134002	14138002
25 / 1"	21,0	3,0	63,0	36,0	Rd52x1/6"	0,160	14134005	14138005
40 / 1,5"	21,0	3,0	78,0	49,0	Rd65x1/6"	0,240	14134009	14138009
50 / 2"	22,0	3,0	92,0	62,0	Rd78x1/6"	0,320	14134011	14138011
65 / 2,5"	25,0	4,0	112,0	80,0	Rd95x1/6"	0,530	14134013	14138013
80 / 3"	29,0	4,0	127,0	94,0	Rd110x1/4"	0,720	14134015	14138015
100 / 4"	31,0	5,0	148,0	115,0	Rd130x1/4"	0,970	14134017	14138017
75	25,0	4,0	119,0	88,0	Rd104x1/6"	0,500	14134014	14138014



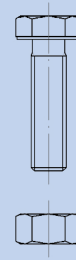
FLANGE WITH GROOVE DIN 11853-2 SERIE C

MM (Inch)	A	B	C	D	E	Kg	304L	316L
12,7 x 1,65 (0,5")	25,5	12,7	9,4	37,0	54,0	0,160	16234099	16236099
19,05 x 1,65 (0,75")	25,5	19,05	15,75	42,0	59,0	0,200	16234100	16236100
25,4 x 1,65 (1")	25,5	25,4	22,1	49,0	66,0	0,280	16234104	16236104
38,1 x 1,65 (1,5")	25,5	37,1	34,8	62,0	79,0	0,340	16234108	16236108
50,8 x 1,65 (2")	25,5	50,8	47,5	75,0	92,0	0,440	16234110	16236110
63,5 x 1,65 (2,5")	25,5	63,5	60,2	89,0	107,0	0,640	16234112	16236112
76,2 x 1,65 (3")	25,5	76,2	72,9	104,0	125,0	0,940	16234114	16236114
101,6 x 2,11 (4")	27,5	101,6	97,4	135,0	157,0	1,480	16234118	16236118



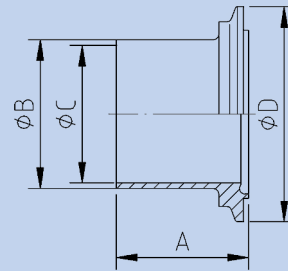
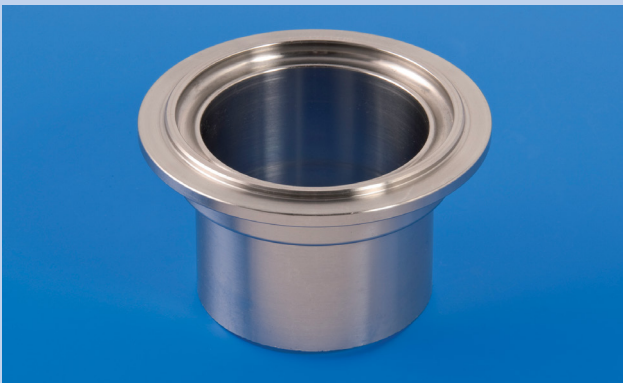
FLANGE WITH COLLAR DIN 11853-2 SERIE C

MM (Inch)	A	B	C	D	E	Kg	304L	316L
12,7 x 1,65 (0,5")	24	12,7	9,4	37,0	54,0	0,160	16234124	16236124
19,05 x 1,65 (0,75")	24	19,05	15,75	42,0	59,0	0,200	16234125	16236125
25,4 x 1,65 (1")	24	25,4	22,1	49,0	66,0	0,280	16234129	16236129
38,1 x 1,65 (1,5")	24	37,1	34,8	62,0	79,0	0,340	16234133	16236133
50,8 x 1,65 (2")	24	50,8	47,5	75,0	92,0	0,440	16234135	16236135
63,5 x 1,65 (2,5")	24	63,5	60,2	89,0	107,0	0,640	16234137	16236137
76,2 x 1,65 (3")	24	76,2	72,9	104,0	125,0	0,940	16234139	16236139
101,6 x 2,11 (4")	26	101,6	97,4	135,0	157,0	1,480	16234143	16236143



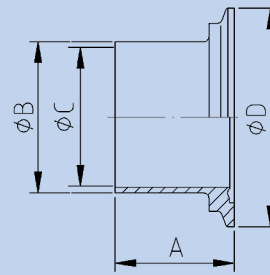
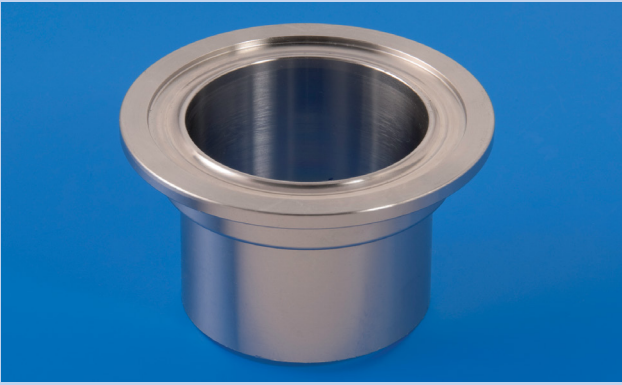
ASSEMBLY SET FLANGE CONNECTION DIN 11853-2-A

DN	DIN 933	DIN 934	C	D	E	Kg	304(L)
0,5"-2"	4 st. M8x30	4 st. M8				0,080	16238271
2,5"	8 st. M8x30	8 st. M8				0,160	16238272
3"	8 st. M10x30	8 st. M10				0,320	16238274
4"	8 st. M10x35	8 st. M10				0,340	16238275



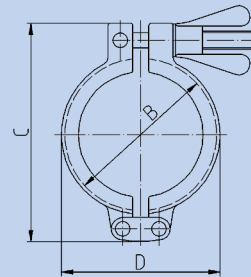
CLAMP FERRULE WITH GROOVE DIN 11853-3 SERIE C

MM (Inch)	A	B	C	D	E	Kg	304L	316L
12,7 x 1,65 (0,5")	23,5	12,7	9,4	34,0		0,160	16234399	16236399
19,05 x 1,65 (0,75")	23,5	19,05	15,75	34,0		0,200	16234400	16236400
25,4 x 1,65 (1")	23,5	25,4	22,1	50,5		0,280	16234404	16236404
38,1 x 1,65 (1,5")	25,5	37,1	34,8	64,0		0,340	16234408	16236408
50,8 x 1,65 (2")	26,0	50,8	47,5	77,5		0,440	16234410	16236410
63,5 x 1,65 (2,5")	29,0	63,5	60,2	91,0		0,640	16234412	16236412
76,2 x 1,65 (3")	30,0	76,2	72,9	106,0		0,940	16234414	16236414
101,6 x 2,11 (4")	31,0	101,6	97,4	130,0		1,480	16234418	16236418



CLAMP FERRULE WITH COLLAR DIN 11853-3 SERIE C

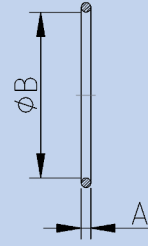
MM (Inch)	A	B	C	D	E	Kg	304L	316L
12,7 x 1,65 (0,5")	22,0	12,7	9,4	34,0		0,160	16234424	16236424
19,05 x 1,65 (0,75")	22,0	19,05	15,75	34,0		0,200	16234425	16236425
25,4 x 1,65 (1")	22,0	25,4	22,1	50,5		0,280	16234429	16236429
38,1 x 1,65 (1,5")	24,0	37,1	34,8	64,0		0,340	16234433	16236433
50,8 x 1,65 (2")	24,5	50,8	47,5	77,5		0,440	16234435	16236435
63,5 x 1,65 (2,5")	27,5	63,5	60,2	91,0		0,640	16234437	16236437
76,2 x 1,65 (3")	28,5	76,2	72,9	106,0		0,940	16234439	16236439
101,6 x 2,11 (4")	29,5	101,6	97,4	130,0		1,480	16234443	16236443



CLAMP HEAVY DIN 11864/11853

DN / Inch / ISO	A	B	C	D	E	Kg	304
10-15 / 0,5"-0,75" / 13,5-21,3		37,0	70,0	43,0		0,175	18134501
20-32 / 1" / 26,9-33,7		53,0	90,0	57,0		0,220	18134504
40 / 1,5" / 42,4-48,3		67,0	106,0	73,0		0,300	18134510
50 / 2"		80,0	120,0	89,0		0,320	18134512
65 / 2,5" / 60,3		94,0	135,0	99,0		0,340	14134514
80 / 3" / 76,1		109,0	149,0	118,0		0,430	18134515
100 / 4"		134,0	180,0	145,0		0,580	18134518ISO

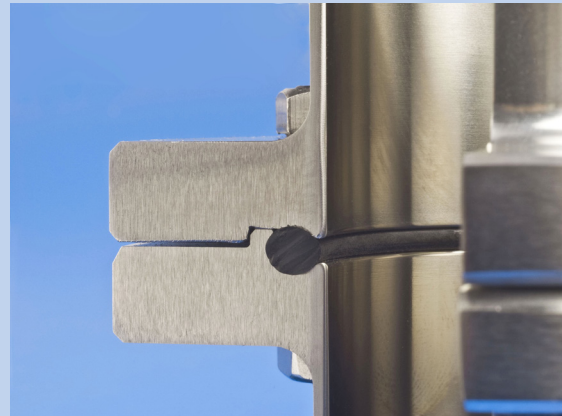




GASKET O-RING DIN 11853 SERIE C

MM (Inch)	A	B	C	D	E	Kg	EPDM	HNBR	FKM/Viton	MVQ/Silicone
12,7 x 1,65 (0,5")	3,5	12,0				0,001	16400576	16400701	16400551	16400526
19,05 x 1,65 (0,75")	3,5	18,0				0,001	16400577	16400701	16400552	16400527
25,4 x 1,65 (1")	3,5	24,0				0,001	16400579	16400704	16400554	16400529
38,1 x 1,65 (1,5")	5,0	37,0				0,003	16400583	16400708	16400557	16400533
50,8 x 1,65 (2")	5,0	50,0				0,003	16400585	16400710	16400559	16400535
63,5 x 1,65 (2,5")	5,0	62,0				0,004	16400587	16400712	16400561	16400537
76,2 x 1,65 (3")	5,0	75,0				0,005	16400589	16400714	16400563	16400539
101,6 x 2,11 (4")	5,0	100,0				0,007	16400593	16400716	16400567	16400543

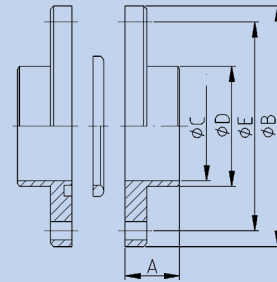
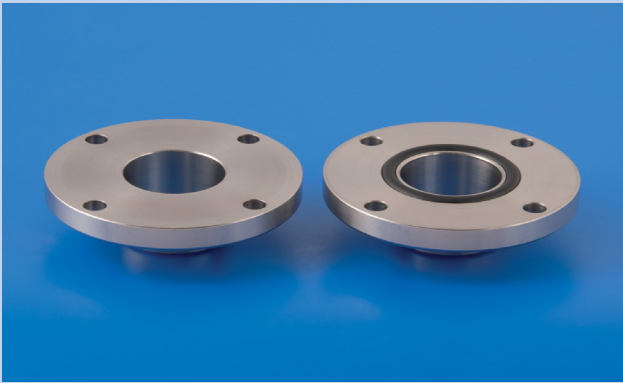
CROSS-SECTION GASKET AREA DIN 11853 COUPLING



## Also applicable

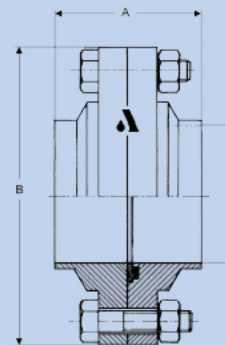
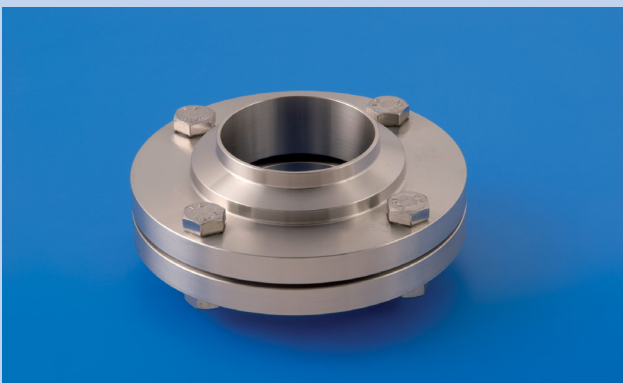
Next to the different couplings and weld fittings, there are in practice also other materials processed in a tube system. These materials officially do not belong to the 'norm family', but can be applied because they have the same sizes. These materials can be brand related solutions but it can also occur that these materials are a corruption to this dimension range. The

DIN 11851 coupling is a nice example of it. This coupling officially consists of the dimensions according to DIN 11850, but is also available in the inch or ISO dimensions. Below you can find the most applicable parts which can be applied. Often only the sizes are the same and the material finishing is different.



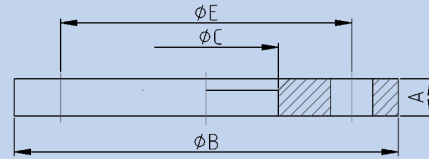
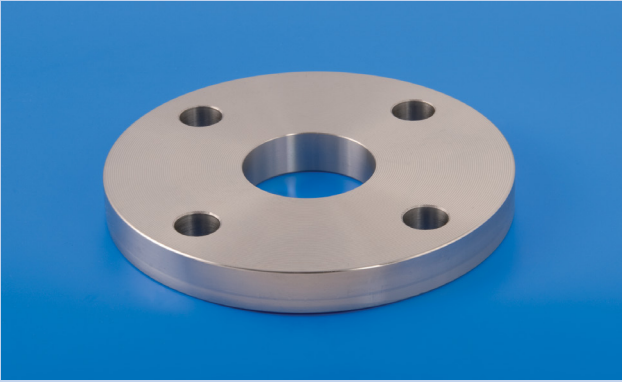
### FLANGE CONNECTION DIN

Inch	A	B	C	D	E	Kg	304L / NBR	316L / NBR
1"	19,0	87,0	22,3	28,0	73,0	0,780	14234954	14238954
1,5"	24,0	97,0	35,1	41,0	82,5	0,940	14234958	14238958
2"	24,0	110,0	47,8	54,0	95,5	1,180	14234960	14238960
2,5"	24,0	127,0	60,5	68,0	112,5	1,500	14234962	14238962
3"	30,0	142,0	72,8	78,0	127,5	2,560	14234964	14238964
4"	29,0	162,0	97,6	104,0	147,5	3,430	14234968	14238968



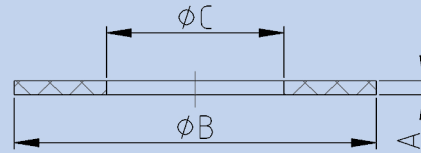
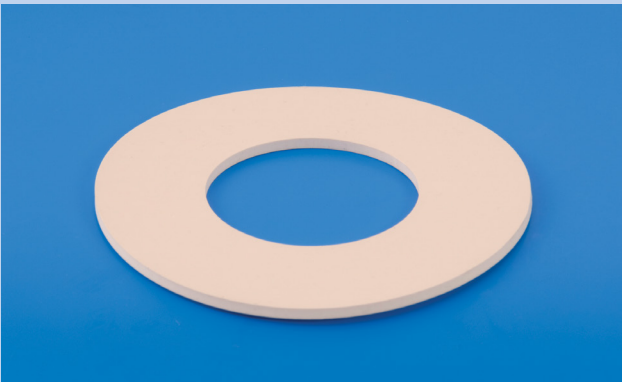
### FGN FLANGE CONNECTION

Inch	A	B	C	D	E	Kg	316L	EPDM	FPM (Viton)	MVQ (silicone)	HNBR
1"	48	83		22,3		0,96	14238954AP	14200954AP	14204954AP	14205954AP	14202954AP
1,5"	48	100		35,1		1,29	14238958AP	14200958AP	14204958AP	14205958AP	14202958AP
2"	48	110		47,8		1,47	14238960AP	14200960AP	14204960AP	14205960AP	14202960AP
2,5"	48	127		60,5		1,82	14238962AP	14200962AP	14204962AP	14205962AP	14202962AP
3"	48	142		72,8		2,1	14238964AP	14200964AP	14204964AP	14205964AP	14202964AP
4"	48	162		97,6		2,64	14238968AP	14200968AP	14204968AP	14205968AP	14202968AP



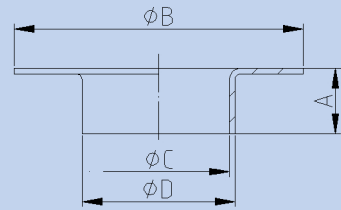
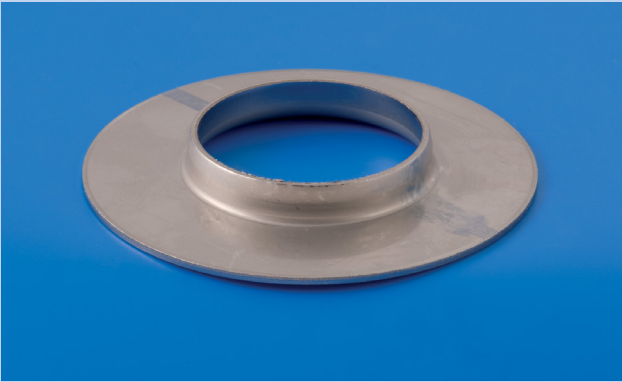
FLANGE EN 1092-1 TYPE 01

DN / Inch	A	B	C	D	E	Kg	304L	316L
25 / 1"	16,0	115,0	25,4		85,0	1,050	67214026	67218026
32 / 1,25"	16,0	140,0	31,8		100,0	1,550	67214033	67218033
40 / 1,5"	16,0	150,0	38,1		110,0	1,730	67214041	67218041
50 / 2"	18,0	165,0	50,8		125,0	2,340	67214051	67218051
65 / 2,5"	18,0	185,0	63,5		145,0	2,850	67214070	67218070
80 / 3"	20,0	200,0	76,1		160,0	3,400	67214085	67218085
100 / 4"	20,0	220,0	101,6		180,0	4,080	67214101	67218101



FLANGE GASKET

DN / Inch	A	B	C	D	E	Kg	Elastofood
25 / 25,4	3,0	68,0	27			0,012	67500026
32 / 31,8	3,0	78,0	33			0,015	67500033
40 / 38,1	4,0	88,0	40			0,025	67500041
50 / 50,8	4,0	102,0	52			0,034	67500051
65 / 63,5	4,0	122,0	65			0,045	67500070
80 / 76,1	4,0	138,0	78			0,057	67500085
100 / 101,6	4,0	158,0	104			0,060	67500101
125 / 129	4,0	188,0	135			0,089	67500126
150 / 154	4,0	212,0	160			0,102	67500151
200 / 204	4,0	268,0	207			0,124	67500201



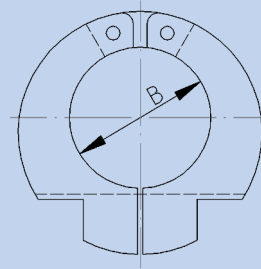
### COLLAR WITH ALUMINIUM FLANGE A

Inch	A	B	C	D	E	Kg	Collar 316L	Flange Aluminium	Flange Alu / Epc coating	NBR gasket
1"	12,0	68,0	21,0	25,0		0,060	52138201	62101025	62401025	67500026
1,25"	13,0	78,0	28,0	32,0		0,080	52138279	62101032	62401032	67500033
1,5"	17,0	88,0	34,0	38,0		0,090	52138338	62101040	62401040	67500041
2"	18,0	102,0	47,0	51,0		0,160	52138461	62101050	62401050	67500051
2,5"	23,0	122,0	60,0	64,0		0,260	52138550	62101065	62401065	67500070
3"	23,0	138,0	72,1	76,1		0,270	52138594	62101080	62401080	67500085
4"	27,0	158,0	98,0	102,0		0,300	52138686	62101100	62401100	67500101



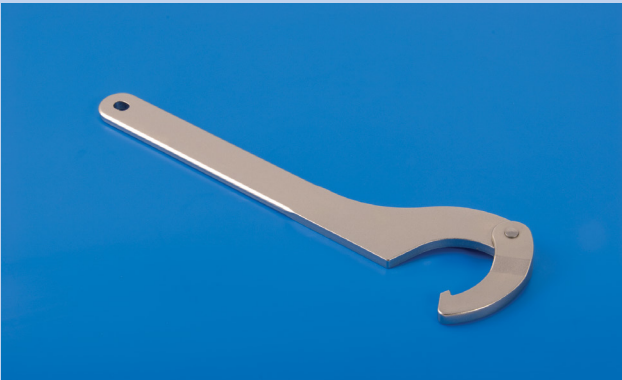
## Couple pieces

On places where a permanent connection is not possible or desired, the so-called couple pieces are often applied. These are available in all versions and dimensions. S.K.S. can provide in all thinkable possibilities. Besides all versions with standard components, there are also couple pieces available which can be custom made according your drawing. The possibilities of process connections are almost unlimited. A combination of different kinds of connections is also possible and in practice it is often applied to get a good connection between the existing situation and the new application. This combination can also mean a connection between pharma, food and industrial.



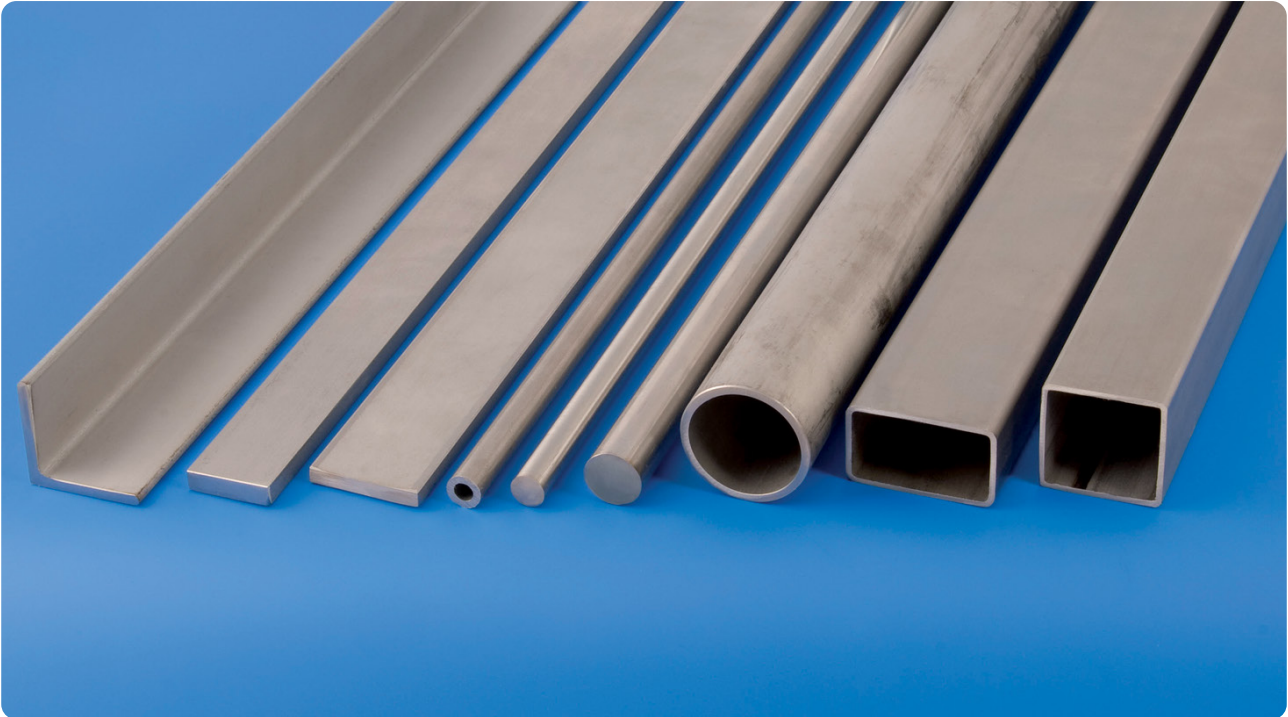
**SAWING TOOL**

Inch	A	B	C	D	E	Kg	SKS nr.
1"		25,4				0,750	90902754
1,25"		31,8				0,800	90902756
1,5"		38,1				0,830	90902758
2"		50,8				0,980	90902760
2,5"		63,5				1,940	90902762
3"		76,2				2,150	90902764
4"		101,6				2,690	90902768



**SPANNER DIN**

DN / Inch	A	B	C	D	Type	Kg	SKS nr.
1" - 1,5"					Typ60/90	0,290	90900862
2" - 4"					Typ90/155	0,430	90900863
DN 125-150					Typ155/230	0,580	90900864



## Mill products

On places where tube components are processed, the use of mill products for construction is inevitable. Some examples for this are the tube bridge, the plateau around a tank, or the frame for a skid. S.K.S. provides a range of this kind of products to also fulfil the demand for it. The biggest part of this range is available from stock.

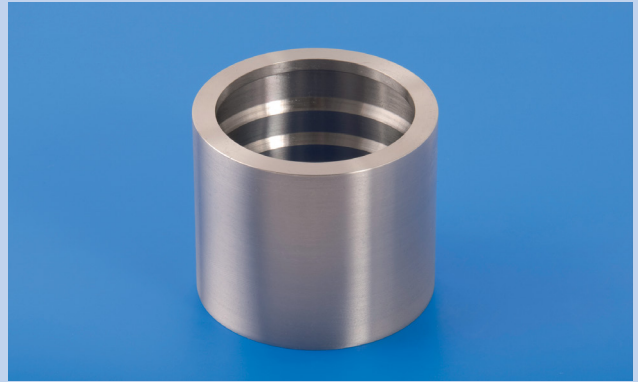
### *The S.K.S. range of mill products are*

- Square tube
- Rectangular tube
- Flat bar warm rolled (variable lengths between the 3.5 and 5 meter)
- Slit flat bar (lengths of 4 meter)
- Round bar tol H9

- Round bar descaled
- Equal angle material (lengths of 6 meter)
- Cold rolled plate (sizes 2000x1000 mm)
- Perforated plate (sizes 2000x1000 mm)
- Warm rolled square bar (lengths between 3.5 and 5 meter)
- Warm rolled hexagonal bar (lengths between 3.5 and 5 meter)

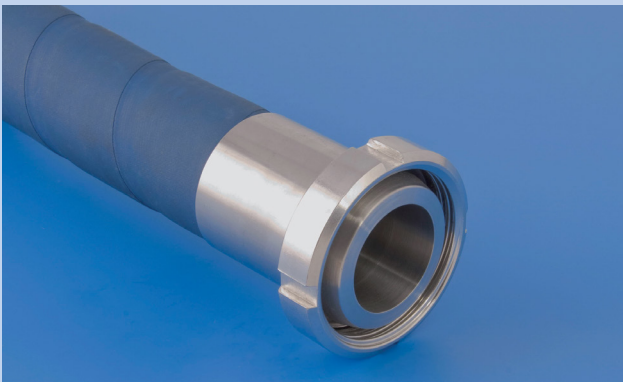
However it is hardly asked, these materials can be delivered with a 3.1 certificate. For complete review of this product range we refer to the brochures of the industrial installation materials (EN DIN of ANSI ASTM).





HOSE CONNECTION FOR HYGIENIC APPLICATION

Inch	Hoseliner 316	Press piece 304	Clampshells alumium
1"	36536301	36533201	36501221
1,25"	36536303	36533202	36501223
1,5"	36536305	36533203	36501225
2"	36536307	36533204	36501227
2,5"	36536309	36533205	36501229
3"	36536311	36533206	36501231
4"	36536313	36533207	36501235



HOSE FOOD GRADE WITH CONNECTION ACC. DIN 11851

Inch	Pressed coupling	Hoseliner	Clampshell set	Alikler hose	Citerdial hose
1"	36536351	36536301	36501221	36100011	36100032
1,5"	36536355	36536305	36501225	36100013	36100035
2"	36536357	36536307	36501227	36100016	36100036
2,5"	36536359	36536309	36501229	36100019	36100039
3"	36536361	36536311	36501231	36100021	36100041
4"	36536363	36536313	36501235	36100023	36100043