

Field of Application

The elbow tube strainer is used to filter solid matter and liquids in the food and drinks industry.



ATTENTION

To avoid danger and damage, the fitting must be used in accordance with the safety instructions and technical data contained in the operating instructions.

Safety instructions



DANGER

• Dismantling the valve or valve assemblies from the plant can cause injuries from fluids or gases flowing out. Dismantle the valve or valve assembly only when the plant has been rendered pressure-less and free of liquid and gas.

Function

The elbow tube strainer is used to filter solid matter and liquids. When the liquid flows through the strainer in the direction of the arrow (page 2 Fig. 1), the solid matter is retained in the mesh bottom.

Installation instructions

The installation position is without import. External forces due to the installation must always be avoided.

Cleaning

The mesh bottom can be removed from the casing for cleaning (see Disassembly and Assembly).



NOTE

It is also possible to clean mesh bottoms, which do not have fine wire-cloth screen, by simply rinsing out the strainer in the opposite flow direction.

Disassembly and assembly

Disassembly:

- Unscrew the nut (2).
- Remove the mesh bottom (5) from the housing (4).
- Dismantle the seal (3) and O-ring (6). (n/a from DN125 - O-ring (6))
- Unscrew the Liner (1) from the mesh bottom (5).

Assembly:

- Thoroughly clean and slightly lubricate mounting areas and running surfaces.
- Assemble in reverse order.



Lubricants

EPDM; Viton®; K-flex
NBR; HNBR; Silicone
Thread

Klüber Paraliq GTE 703
Klüber Paraliq GB 363
Teflongrease Interflon

Technical Data

Model:	Elbow tube strainer
Mesh bottom:	Slotted hole screen 0,25mm
Valve size:	DN 25 - 100
Connection:	Thread DIN11851
Temperature:	95°C depending on the medium
Operating pressure:	DN25 - 100 = 10 bar DN125 = 6 bar DN150 = 4 bar

Material:	in product contact	not in product contact
Stainless steel:	1.4404 AISI316L 1.4301 AISI304	1.4301 AISI304
Surfaces:	RA 0,8µm	RA 2,5µm E-polished
Seal:	NBR	-

Dimensions

DN	a	b	c	d	L1	L2	L3	L4	L5
25	ø 26	Rd 52 x 1/6"	ø 54	61	374	318	384	407	430
32	ø 32	Rd 58 x 1/6"	ø 70	71	374	326	384	407	431
40	ø 38	Rd 65 x 1/6"	ø 70	72	374	316	384	407	431
50	ø 50	Rd 78 x 1/6"	ø 85	82	389	327	399	432	446
65	ø 66	Rd 95 x 1/6"	ø 104	67	419	345	428	455	477
80	ø 81	Rd 110 x 1/4"	ø 129	115	713	560	722	763	771
100	ø 100	Rd 130 x 1/4"	ø 154	136	684	560	695	740	745

Measures in mm

☐ Spare parts list

Article	Item. 1	Item. 2	Item. 3	Item. 4	Item. 5	Item. 6
	Liner AISI301 / AISI316L	Nut 1.4301	Seal DIN11851 NBR	Housing AISI301 / AISI316L	Mesh bottom AISI301 / AISI316L	O-ring NBR
7027 025 000-041	7027 025 003-041	2003 050 000-021	2004 050 000-056	7027 025 001-041	7028 025 000-041	2304 035 030-055 ø35x3
7027 032 000-041	7027 040 003-041	2003 065 000-021	2004 065 000-056	7027 032 001-041	7028 032 000-041	2304 042 030-055 ø42x3
7027 040 000-041	7027 040 003-041	2003 065 000-021	2004 065 000-056	7027 040 001-041	7028 040 000-041	2304 042 030-055 ø42x3
7027 050 000-041	7027 050 003-041	2003 080 000-021	2004 080 000-056	7027 050 001-041	7028 050 000-041	2304 059 035-055 ø59x3,5
7027 065 000-041	7027 065 003-041	2003 100 000-021	2004 100 000-056	7027 065 001-041	7028 065 000-041	2304 070 035-055 ø70x3,5
7027 080 000-041	7027 080 003-041	2003 125 000-021	2004 125 000-056	7027 080 001-041	7028 080 000-041	2304 085 035-055 ø85x3,5
7027 100 000-041	7027 100 003-041	2003 150 000-021	2004 150 000-056	7027 100 001-041	7028 100 000-041	2304 108 030-055 ø108x3

Code Material: xxxx-xxx xxx-021 = 1.4301 (AISI301) E-polished
 xxxx-xxx xxx-041 = 1.4404 (AISI316L) E-polished

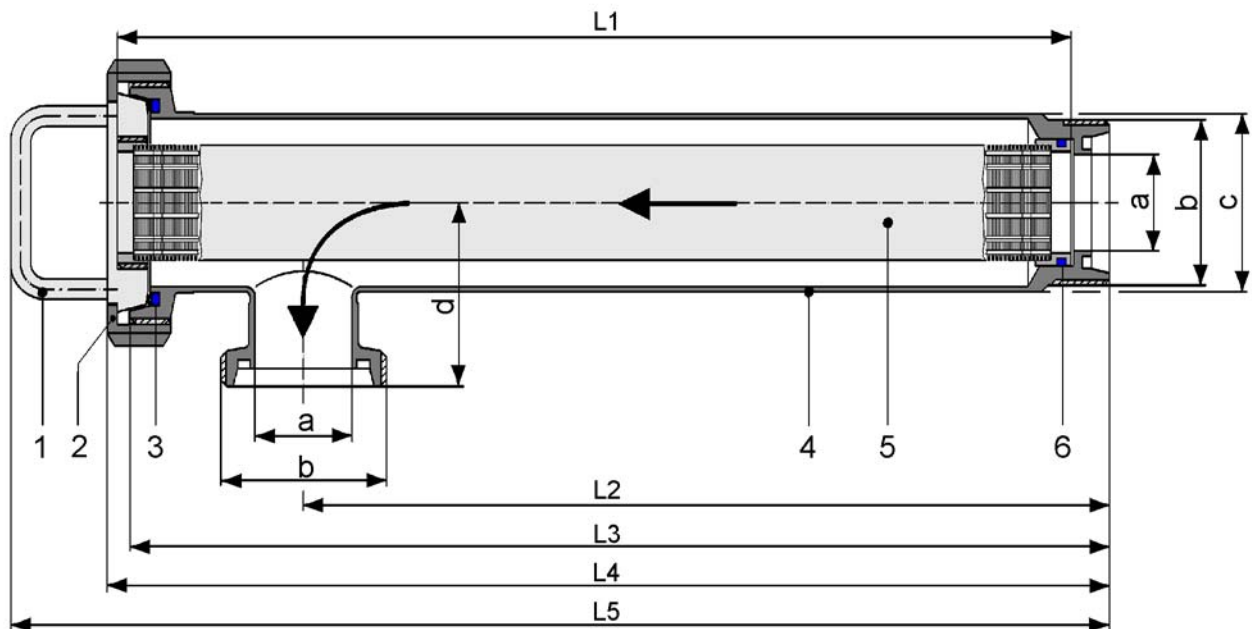


Fig. 1