

# HYGINOX SE-15



## DESCRIPTION

HYGINOX SE is a range of close-coupled centrifugal pump with hygienic design. This single-stage horizontal pump has a circular casing with axial suction and tangential discharge. The main pump components are pump casing, impeller, cover, lantern and a shaft which is rigidly coupled to the motor shaft.

## APPLICATION

The sanitary and cost-efficient design of the HYGINOX SE centrifugal pump makes it particularly suitable as main process pump in the dairy, beverage, pharmaceutical and cosmetic industries. As a general rule, HYGINOX SE pumps, in their standard versions, are used in the food industry mainly to transfer liquids.

## DESIGN AND FEATURES

HYGINOX SE is made of a cold-formed stainless steel casing, stainless steel open impeller (investment casting), pump cover, lantern and shaft, connected to the motor shaft by mechanical compression. This pump is equipped with a single mechanical seal in its standard version. The motor complies with the IEC standards, it is protected with a stainless steel shroud and provided with the height adjustable hygienically designed legs.

## MECHANICAL SEAL

The Hyginox SE pump is provided with an internal single mechanical seal. The seal is balanced and has a hygienic design. As standard, the stationary part is in carbon and the rotary part is in silicon carbide, the gaskets are in EPDM.



## OPERATING LIMITS

Nominal Pressure:	1000kPa (10bar)
Temperature range:	-10°C to 120°C
SIP:	140°C (max. 30 min)

## PUMP CHARACTERISTICS

Model:	Hyginox SE-15	Suction (mm):	40
Type:	C1415	Discharge (mm):	32
Speed (rpm):	3000	Connection type:	DIN 11851
Efficiency (%):	40	Impeller size (mm):	105
Drive power (kW):	1,1		

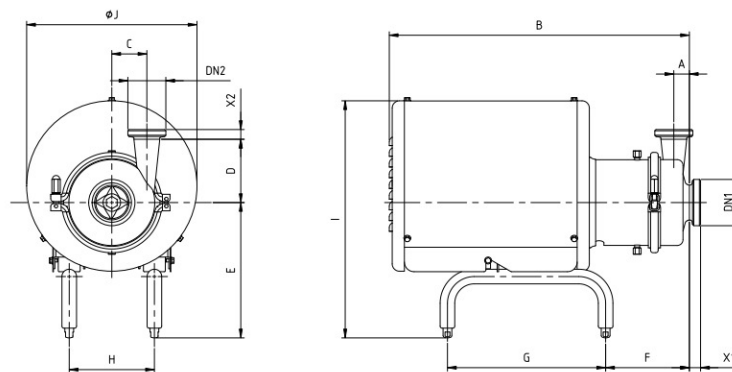
## MATERIALS AND DESIGN

Pump casing:	AISI316L	Motor shroud:	MR - 304
Back plate:	AISI316L	Lantern:	AISI304L
Shaft:	AISI316L	Base Plate:	AISI304
Impeller:	AISI316L	Elastomers:	EPDM
Mechanical seal:	Single	Mechanical seal materials:	C/SiC EPDM
Surface finish internal:	Polished Ra ≤ 0,8µm		

## MOTOR SPECIFICATION

Motor vendor:	TECHTOP	Form:	B3/B5 IEC
Size (kW):	1,1	Insulation:	Class F
Rated speed (rpm):	2900	Protection class:	IP55
Frequency (Hz):	50	Motor size:	T80
Voltage (V):	230/400	Efficiency class:	IE3

## DIMENSIONS | SE-15



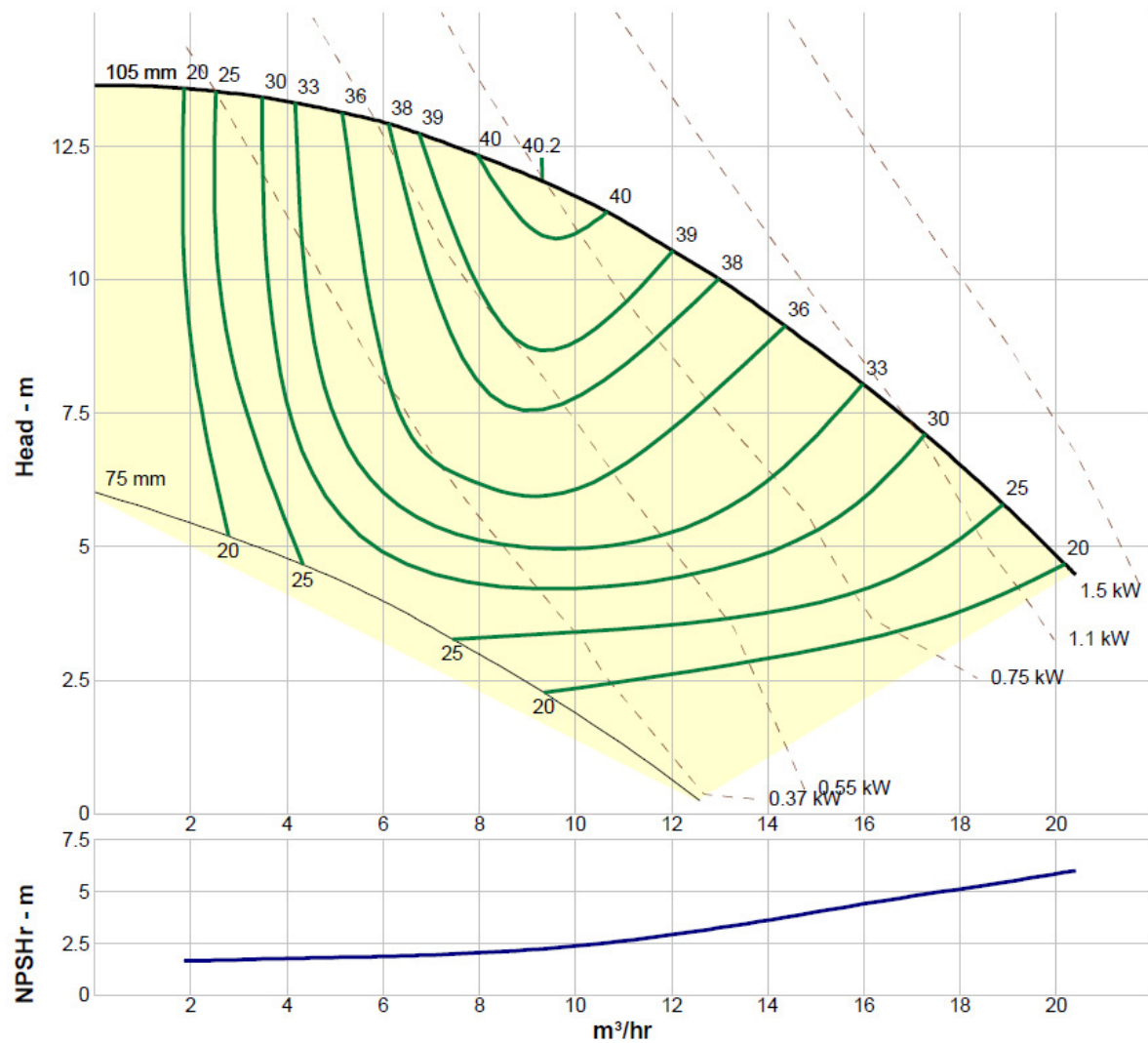
Type	DN1	DN2	X1	X2	D	A	B	C	E	F	G	H	I	ØJ	kg
MR	40	32	26	22	78	29	532	55	217	152	275	132	405	290	26



## PERFORMANCE EVALUATION

Duty	Flow [m <sup>3</sup> /hr]	Head [m]	Efficiency [%]	Power [kW]	NPSHr [m]
Minimum	2,0	13,6	21	0,347	1,68
BEP	9,29	11,9	40	0,745	2,24
Maximum	17,0	7,3	31	1,1	4,78

## PUMP CURVE



## SPARE PARTS

**Set:**

Artikel number	Description
IN8GC100151452	Centrifugal pump Hyginox Spare part set SE-15 C/SiC/EPDM

**Set containing:**

Pos.	Description	Qty
08	Mechanical seal C/SiC/EPDM	1
80A	O-ring	1
80D	O-ring	1

