



Alfa Laval LKS 105 Tank Sight Glass

Sight glass for visual inspection of products in pressureless storage tanks

Introduction

The Alfa Laval LKS 105 Tank Sight Glass is a sight glass that permits direct distortion-free visual inspection of process conditions, products, liquid levels and cleaning inside pressureless storage tanks.

Welded into tanks or containers and installed above the liquid level, the LKS 105 Tank Sight Glass provide free view through a 105-mm leakproof opening made of toughened borosilicate glass. This makes it possible for operators to view the color, clarity, turbidity, or other critical characteristics of the product or tank cleaning status.

Inspection enables early detection of potential issues and quick response. This helps prevent costly downtime, protect plant equipment and improve operational efficiency.

Application

The Alfa Laval LKS 105 Tank Sight Glass is designed to facilitate clear, continuous and unobstructed inspection of various process conditions inside pressureless storage tanks across the dairy, food, beverage, personal care, biotechnology and pharmaceutical industries.

Benefits

- Improved operational efficiency
- Enables early detection and quick response to potential issues
- Reliable operation and more uptime
- Quick and easy to install
- Low maintenance requirements
- Withstand static pressure up to 1 bar

Standard design

The LKS 105 In-Line Sight Glass consists of a threaded flange which is welded onto the tank, two seal rings, a borosilicate glass plate and lock washer.



TECHNICAL DATA

Pressure

Max. product pressure: 100 kPa (1 bar)

Temperature

Max. temperature: 90 °C

Options

- a. MiniVision light fitting with push botton for LKS (20 or 50 Watt).
- b. MiniVision light fitting without push botton for LKS (50 Watt).
- c. Collar flange fixation for MiniVision light fitting without push botton for LKS size 105.

PHYSICAL DATA

Materials

Washers: Stainless steel AISI 304

Glass: Borasilikat

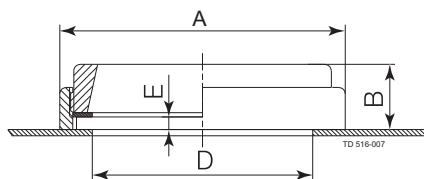
Seal rings: Para rubber, Klingerite

Finish: Semi-bright

MessurementsSize: \varnothing 105 mm

Weight: 1 kg

Dimensions (mm)



Size	105 (mm)	105 (inch)
A	136	5.35
B	31	1.22
D	105	4.13
E	6.5	0.26

Alfa Laval reserves the right to change specifications without prior notification.

How to contact Alfa Laval

Contact details for all countries are continually updated on our website. Please visit www.alfalaval.com to access the information direct.